

Product Data Sheet

Purified anti-Cyclin B1

Catalog # / Size: 647901 / 25 µg
647902 / 100 µg

Clone: V152

Isotype: Mouse IgG1

Immunogen: Hamster Cyclin B1

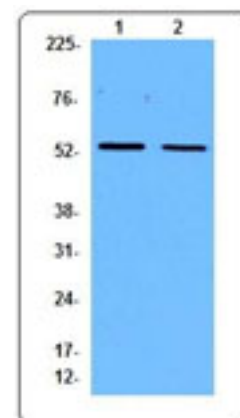
Reactivity: Human, **Cross-Reactivity:** Mouse

Preparation: The antibody was purified by affinity chromatography.

Formulation: This antibody is provided in phosphate-buffered solution, pH 7.2, containing 0.09% sodium azide. Final antibody concentration is 0.5 mg/ml.

Concentration: 0.5 mg/ml

Storage: The antibody solution should be stored undiluted at 4°C.



Western blot analysis of extracts from Hela (lane 1) and NIH/3T3 (lane 2) cells, using anti-Cyclin B1, V152.

Applications:

Applications: WB - *Quality tested*
IF, IHC - *Reported in the literature*

Recommended Usage: Each lot of this antibody is quality control tested by Western blotting. Western blotting, suggested working dilution(s): Use 2.5-5 µg antibody per 5 ml antibody dilution buffer for each mini-gel. It is recommended that the reagent be titrated for optimal performance for each application.

Application Notes: Additional reported applications include: immunohistochemistry² of formalin-fixed paraffin-embedded sections and immunofluorescence¹ of methanol fixed cells grown on glass coverslips.

Application References: 1. Geley S, *et al.* 2001. *J. Cell Biol.* 153:137-148 PubMed.
2. Brandeis M, *et al.* 1998. *P. Natl. Acad. Sci. USA* 95:4344-4349. PubMed
3. Matsumura F, *et al.* 2011. *J. Biol Chem.* PubMed

Description: Cyclin B1 belongs to the cyclin family, Cyclin AB subfamily, and predicted molecular weight 48 kD. Cyclin B1 is expressed ubiquitously in all eukaryotes and the level of cyclin B1 was minimal in G, began to rise in S phase, and is primarily cytoplasmic. Cyclin B1 moves into the nucleus just at the start of mitosis and associates with condensed chromosomes and the mitotic spindle. The level of cyclin B1 peaked at the G/M transition. Cyclin B1 is essential for the control of the cell cycle at the G2/M transition. The V152 monoclonal antibody recognizes human and mouse Cyclin B1 and has been shown to be useful for Western blotting, and immunohistochemistry (paraffin embedded tissue sections) of human and mouse cyclin B1.

Antigen References: 1. Morgan DO, *et al.* 1995. *Nature* 374:131

Related Products: **Product**
HRP Goat anti-mouse IgG (minimal x-reactivity)

Clone
Poly4053

Application
ELISA, IHC, WB



For research use only. Not for diagnostic use. Not for resale. BioLegend will not be held responsible for patent infringement or other violations that may occur with the use of our products.



*These products may be covered by one or more Limited Use Label Licenses (see the BioLegend Catalog or our website, www.biollegend.com/ordering#license). BioLegend products may not be transferred to third parties, resold, modified for resale, or used to manufacture commercial products, reverse engineer functionally similar materials, or to provide a service to third parties without written approval of BioLegend. By use of these products you accept the terms and conditions of all applicable Limited Use Label Licenses. Unless otherwise indicated, these products are for research use only and are not intended for human or animal diagnostic, therapeutic or commercial use.