

Product Data Sheet

Purified anti-ERK1/2 Phospho (Thr202/Tyr204)

Catalog # / Size: 647801 / 50 µl

Clone: Poly6478

Isotype: Rabbit polyclonal

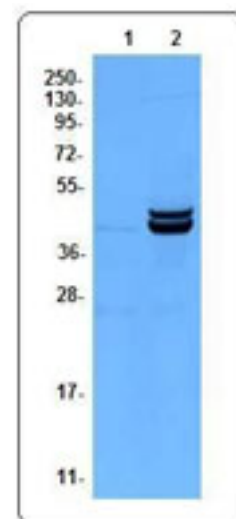
Immunogen: Phosphorylated Erk1/2 peptide

Reactivity: Human, **Cross-Reactivity:** Predicted to react with Mouse, Rat (by sequence comparison)

Preparation: The antibody was purified by affinity chromatography.

Formulation: Phosphate-buffered solution, pH 7.2, containing 0.09% sodium azide and 50% glycerol.

Storage: Upon receipt, store frozen at -20 °C.



Untreated (1) and PMA-treated (2) Jurkat whole cell lysates were resolved by electrophoresis, transferred to nitrocellulose and probed with anti-ERK Phosphorylated antibody, Poly6478. Proteins were visualized using a donkey anti-rabbit secondary conjugated to HRP and a chemiluminescence detection system.

Applications:

Applications: WB - *Quality tested*

Recommended Usage: Each lot of this antibody is quality control tested by Western blotting. For Western blotting, the suggested use of this reagent is 10 µl per 5 ml antibody dilution buffer for each mini-gel. It is recommended that the reagent be titrated for optimal performance for each application.

Description: ERK1/2 are members of mitogen-activated kinases (MAPKs) of serine/threonine protein kinases. They are involved in many cellular events such as proliferation, differentiation, motility and cell death. ERK 1/2 can be activated by a range of extracellular stimuli, such as mitogen, growth factors, and cytokines. Once activated, the ERKs will in turn phosphorylate many other downstream molecules that are involved in a range of cell activities.

Antigen References: 1. Roux PP, *et al.* 2004. *Microbiol Mol Biol Rev* 68:320
 2. Clark EA, *et al.* 1996 *J. Biol. Chem.* 271:14814
 3. Dalby KN, *et al.* *J. Biol. Chem.* 273:1496

Related Products: **Product**
 HRP Donkey anti-rabbit IgG (minimal x-reactivity)

Clone
 Poly4064

Application
 ELISA, IHC, WB



For research use only. Not for diagnostic use. Not for resale. BioLegend will not be held responsible for patent infringement or other violations that may occur with the use of our products.



*These products may be covered by one or more Limited Use Label Licenses (see the BioLegend Catalog or our website, www.biollegend.com/ordering#license). BioLegend products may not be transferred to third parties, resold, modified for resale, or used to manufacture commercial products, reverse engineer functionally similar materials, or to provide a service to third parties without written approval of BioLegend. By use of these products you accept the terms and conditions of all applicable Limited Use Label Licenses. Unless otherwise indicated, these products are for research use only and are not intended for human or animal diagnostic, therapeutic or commercial use.