

Product Data Sheet

Alexa Fluor® 647 anti-human CD268 (BAFF-R, BAFFR)

Catalog # / Size: 316914 / 100 tests

Clone: 11C1

Isotype: Mouse IgG1, κ

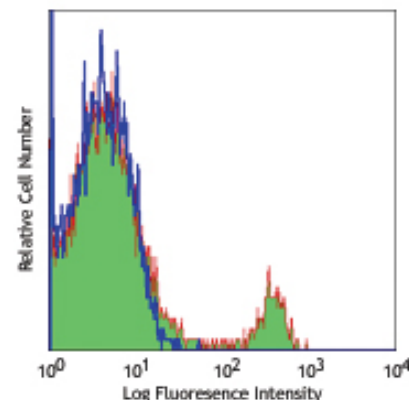
Immunogen: BAFF-R-L1.2 transfectants

Reactivity: Human

Preparation: The antibody was purified by affinity chromatography, and conjugated with Alexa Fluor® 647 under optimal conditions. The solution is free of unconjugated Alexa Fluor® 647.

Formulation: Phosphate-buffered solution, pH 7.2, containing 0.09% sodium azide and 0.2% (w/v) BSA (origin USA).

Storage: The antibody solution should be stored undiluted at 4°C and protected from prolonged exposure to light. **Do not freeze.**



Human peripheral blood lymphocytes stained with 11C1 Alexa Fluor® 647

Applications:

Applications: FC - Quality tested

Recommended Usage: Each lot of this antibody is quality control tested by immunofluorescent staining with flow cytometric analysis. For immunofluorescent staining, the suggested use of this reagent is 5 μ l per million cells or 5 μ l per 100 μ l of whole blood. It is recommended that the reagent be titrated for optimal performance for each application.

* Alexa Fluor® 647 has a maximum emission of 668 nm when it is excited at 633nm / 635nm.

** Alexa Fluor® is a registered trademark of Molecular Probes, Inc. Alexa Fluor® dye antibody conjugates are sold under license from Molecular Probes, Inc. for research use only, except for use in combination with microarrays and high content screening, and are covered by pending and issued patents.

Application References:

1. Ng LG, *et al.* 2004. *J. Immunol.* 173:807. (FC IHC)
2. Personal communication. (Block)
3. Wejksza K, *et al.* 2013. *J. Immunol.* 190:2575. PubMed.

Description: B cell-activating factor receptor (BAFF-R) is a 19 kD type III membrane protein. It belongs to TNFR superfamily, also known as TNFRSF member 13C (TNFRSF13C), BAFF receptor 3 (BR3), or CD268. BAFF-R is expressed on mature B cells, B cell lymphoma, and T cell subset. BAFF-R is the major receptor for BAFF/BLys (or TALL-1, THANK) which binds to TACI and BCMA as well. The interaction of BAFF with BAFF-R promotes NF- κ B activation and plays predominant roles in B-cell maturation and survival as well as costimulates T cell activation and proliferation. TRAF3 is a BAFF-R intracellularly associated protein, which negatively regulates BAFF-R-mediated NF- κ B activation.

Antigen References:

1. Thompson JS, *et al.* 2001. *Science* 293:2108.
2. Ng LG, *et al.* 2004. *J. Immunol.* 173:807.
3. Rodig SJ, *et al.* 2005. *Human Pathol.* 36:1113.
4. Ye Q, *et al.* 2004. *Eur. J. Immunol.* 34:2750.
5. Kayagaki N, *et al.* 2002 *Immunity* 17:515.

Related Products:

Product	Clone	Application
Cell Staining Buffer		FC, ICC, ICFC
Alexa Fluor® 647 Mouse IgG1, κ Isotype Ctrl (FC)	MOPC-21	FC, IF
Human TruStain FcX™ (Fc Receptor Blocking Solution)		FC, ICC, ICFC



For research use only. Not for diagnostic use. Not for resale. BioLegend will not be held responsible for patent infringement or other violations that may occur with the use of our products.



*These products may be covered by one or more Limited Use Label Licenses (see the BioLegend Catalog or our website, www.biollegend.com/ordering#license). BioLegend products may not be transferred to third parties, resold, modified for resale, or used to manufacture commercial products, reverse engineer functionally similar materials, or to provide a service to third parties without written approval of BioLegend. By use of these products you accept the terms and conditions of all applicable Limited Use Label Licenses. Unless otherwise indicated, these products are for research use only and are not intended for human or animal diagnostic, therapeutic or commercial use.