

Product Data Sheet

Purified anti-human Ig light chain κ

Catalog # / Size: 316502 / 100 μ g

Clone: MHK-49

Isotype: Mouse IgG1, κ

Immunogen: Human Ig cocktail

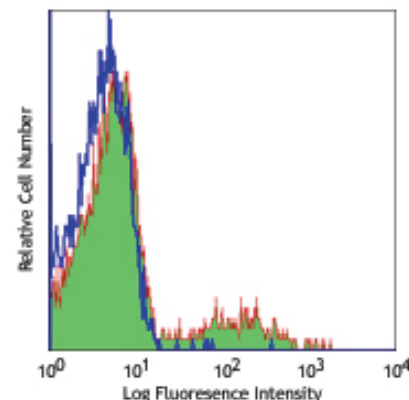
Reactivity: Human

Preparation: The antibody was purified by affinity chromatography.

Formulation: Phosphate-buffered solution, pH 7.2, containing 0.09% sodium azide.

Concentration: 0.5 mg/ml

Storage: The antibody solution should be stored undiluted at 4°C.



Over night cultured human peripheral blood lymphocytes stained with purified MHK-49, followed by anti-mouse IgG FITC

Applications:

Applications: FC, ICFC - *Quality tested*
ELISA - *Reported in the literature*

Recommended Usage: Each lot of this antibody is quality control tested by immunofluorescent staining with flow cytometric analysis. For immunofluorescent staining, the suggested use of this reagent is $\leq 0.5 \mu$ g per 10^6 in 100 μ l staining volume or 100 μ l of whole blood. It is recommended that the reagent be titrated for optimal performance for each application.

Description: The MHK-49 antibody reacts with both soluble and membrane human immunoglobulin light chain kappa (κ). It does not react with human immunoglobulin light chain lambda (λ) or heavy chain (μ). The MHK-49 antibody can be used as primary or secondary reagent for immunofluorescent staining or ELISA analysis.

Related Products: **Product**
Purified Mouse IgG1, κ Isotype Ctrl
Cell Staining Buffer

Clone
MOPC-21

Application
FC, ICFC, ICC, IF, IHC, IP, WB
FC, ICC, ICFC



For research use only. Not for diagnostic use. Not for resale. BioLegend will not be held responsible for patent infringement or other violations that may occur with the use of our products.



*These products may be covered by one or more Limited Use Label Licenses (see the BioLegend Catalog or our website, www.biollegend.com/ordering#license). BioLegend products may not be transferred to third parties, resold, modified for resale, or used to manufacture commercial products, reverse engineer functionally similar materials, or to provide a service to third parties without written approval of BioLegend. By use of these products you accept the terms and conditions of all applicable Limited Use Label Licenses. Unless otherwise indicated, these products are for research use only and are not intended for human or animal diagnostic, therapeutic or commercial use.