

Product Data Sheet

Purified anti-human CD354 (TREM-1)

Catalog # / Size: 316101 / 25 µg
316102 / 100 µg

Clone: TREM-37

Isotype: Mouse IgG2b, κ

Immunogen: Recombinant human TREM-1

Reactivity: Human

Preparation: The antibody was purified by affinity chromatography.

Formulation: Phosphate-buffered solution, pH 7.2, containing 0.09% sodium azide.

Concentration: 0.5 mg/ml

Storage: The antibody solution should be stored undiluted at 4°C.

Applications:

Applications: FC - *Quality tested*
ELISA Capture, WB - *Validated*

Recommended Usage: Each lot of this antibody is quality control tested by immunofluorescent staining with flow cytometric analysis. For immunofluorescent staining, the suggested use of this reagent is ≤0.5 µg per million cells in 100 µl volume. It is recommended that the reagent be titrated for optimal performance for each application.

Application Notes: **ELISA Capture:** The purified TREM-37 antibody is useful as a capture antibody for TREM-1 specific sandwich ELISA, when used in conjunction with the biotinylated TREM-26 antibody (Cat. No. 314904) as a detection antibody.

Description: TREM-1 is a 30 kD glycoprotein also known as triggering receptor expressed on myeloid cells 1, and triggering receptor expressed on monocytes 1. It is a Type I membrane protein that contains an immunoglobulin-like V-type domain. Alternatively spliced protein variant may be secreted. TREM-1 is highly expressed on peripheral blood myeloid cells (particularly mature monocytes and granulocytes); TREM-1 expression can be further upregulated by bacteria, fungi and lipopolysaccharide. TREM-1 has been shown to interact with the adaptor protein DAP12 to stimulate neutrophil and monocyte-mediated inflammatory responses through the triggering and release of pro-inflammatory cytokines and chemokines. TREM-1 is thought to amplify inflammatory responses to fungal and bacterial infections and potentiate septic shock. This antibody has been shown to be useful for Western blotting, flow cytometric staining, and ELISA pairing with biotinylated TREM-26 antibody (Cat. No. 314904) as a detection antibody.

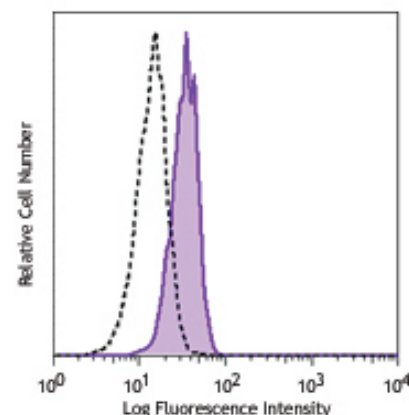
Antigen References:

1. Bouchon A, *et al.* 2001. *Nature* 410:1103.
2. Bouchon A, *et al.* 2000. *J. Immunol.* 164:4991.
3. Gingras MC, *et al.* 2002. *Mol. Immunol.* 38:817.

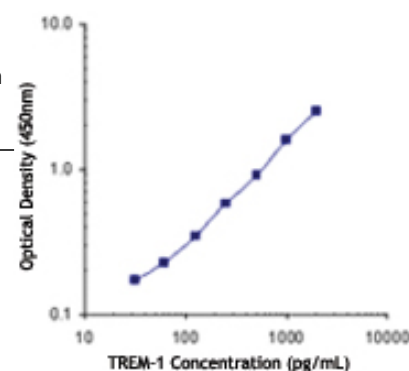
Related Products: **Product**
Purified Mouse IgG2b, κ Isotype Ctrl
Cell Staining Buffer
RBC Lysis Buffer (10X)

Clone
MPC-11

Application
FC, ICFC, ICC, IF, IHC, IP, WB
FC, ICC, ICFC
FC, ICFC



Human peripheral blood granulocytes were stained with purified CD354 (clone TREM-37, filled histogram) or mouse IgG2b, κ isotype control, followed by anti-mouse IgG PE.



For research use only. Not for diagnostic use. Not for resale. BioLegend will not be held responsible for patent infringement or other violations that may occur with the use of our products.



*These products may be covered by one or more Limited Use Label Licenses (see the BioLegend Catalog or our website, www.biollegend.com/ordering#license). BioLegend products may not be transferred to third parties, resold, modified for resale, or used to manufacture commercial products, reverse engineer functionally similar materials, or to provide a service to third parties without written approval of BioLegend. By use of these products you accept the terms and conditions of all applicable Limited Use Label Licenses. Unless otherwise indicated, these products are for research use only and are not intended for human or animal diagnostic, therapeutic or commercial use.