

Alexa Fluor® 647 anti-human CD282 (TLR2)

Catalog # / Size: 309714 / 100 tests

Clone: TL2.1

Isotype: Mouse IgG2a, κ

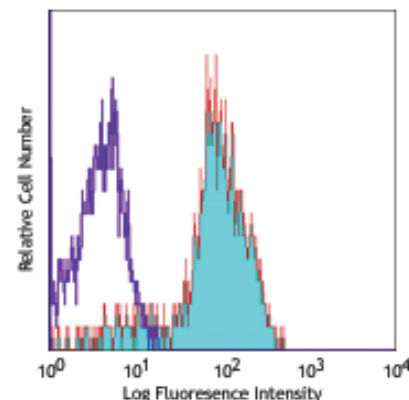
Immunogen: Human TLR2-transfected CHO cells

Reactivity: Human

Preparation: The antibody was purified by affinity chromatography, and conjugated with Alexa Fluor® 647 under optimal conditions. The solution is free of unconjugated Alexa Fluor® 647.

Formulation: Phosphate-buffered solution, pH 7.2, containing 0.09% sodium azide and 0.2% (w/v) BSA (origin USA).

Storage: The antibody solution should be stored undiluted at 4°C and protected from prolonged exposure to light. **Do not freeze.**



Human peripheral blood monocytes stained with TL2.1 Alexa Fluor® 647

Applications:

Applications: FC - Quality tested

Recommended Usage: Each lot of this antibody is quality control tested by immunofluorescent staining with flow cytometric analysis. For immunofluorescent staining, the suggested use of this reagent is 5 µl per million cells or 5 µl per 100 µl of whole blood. It is recommended that the reagent be titrated for optimal performance for each application.

* Alexa Fluor® 647 has a maximum emission of 668 nm when it is excited at 633nm / 635nm.

** Alexa Fluor® is a registered trademark of Molecular Probes, Inc. Alexa Fluor® dye antibody conjugates are sold under license from Molecular Probes, Inc. for research use only, except for use in combination with microarrays and high content screening, and are covered by pending and issued patents.

Application Notes: The TL2.1 antibody is useful for blocking studies. It has been reported to block TLR2 agonist-induced cellular activation. Additional reported applications (for the relevant formats) include: inhibition of PGP activity and blocking of cytokine production^{1,3,7}, immunoprecipitation¹, immunohistochemistry of 4% paraformaldehyde-fixed frozen sections² and immunohistochemistry of HOPE-fixed (HEPES-glutamic acid buffer-mediated organic solvent protection effect) paraffin-embedded sections⁴, and Western blotting². The LEAF™ purified antibody (Endotoxin <0.1 EU/µg, Azide-Free, 0.2 µm filtered) is recommended for functional assays (Cat. No. 309709). For highly sensitive assays, we recommend Ultra-LEAF™ purified antibody (Cat. No. 309716) with a lower endotoxin limit than standard LEAF™ purified antibodies (Endotoxin <0.01 EU/µg).

Application References:

1. Flo T, *et al.* 2000. *J. Immunol.* 164:2064.
2. Faure E, *et al.* 2001. *J. Immunol.* 166:2018.
3. Sugawara S, *et al.* 2001. *Infect. Immun.* 69:4951.
4. Droemann D, *et al.* 2003. *Histochem. Cell Biol.* 119:103.
5. Chavakis E, *et al.* 2007. *Circ. Res.* 100:204. PubMed
6. Fiala M, *et al.* 2007. *Proc. Natl. Acad. Sci. USA* 10.1073/P. Natl. Acad. Sci. USA.0701267104.
7. Goo SY, *et al.* 2007. *J. Biol. Chem.* doi:10.1074/jbc.M701876200. PubMed
8. Weiss DJ, *et al.* 2008. *J. Leukoc. Biol.* 83:48. PubMed
9. Harris, KM., *et al.* 2011. *J. Leukoc Biol.* 90:727. PubMed.

Description: Toll-like receptors are type I transmembrane signaling receptors which are critical for the innate host defense to pathogens. Toll-like receptor 2 (TLR2), known as CD282, has been identified as a receptor that is central to the innate immune system's response to lipoproteins of Gram-negative bacteria and Gram-positive bacteria, as well as a receptor for peptidoglycan and lipoteichoic acid and other bacterial cell membrane products.

Antigen References:

1. Lien E, *et al.* 1999. *J. Biol. Chem.* 274:33419.
2. Lien E, *et al.* 2001. *J. Biol. Chem.* 276:1873.
3. Sabroe I, *et al.* 2002. *J. Immunol.* 168:4701

Related Products:

Product	Clone	Application
Cell Staining Buffer		FC, ICC, ICFC
RBC Lysis Buffer (10X)		FC, ICFC
Alexa Fluor® 647 Mouse IgG2a, κ Isotype Ctrl	MOPC-173	FC, ICFC
Human TruStain FcX™ (Fc Receptor Blocking Solution)		FC, ICC, ICFC



For research use only. Not for diagnostic use. Not for resale. BioLegend will not be held responsible for patent infringement or other violations that may occur with the use of our products.



*These products may be covered by one or more Limited Use Label Licenses (see the BioLegend Catalog or our website, www.biolegend.com/ordering#license). BioLegend products may not be transferred to third parties, resold, modified for resale, or used to manufacture commercial products, reverse engineer functionally similar materials, or to provide a service to third parties without written approval of BioLegend. By use of these products you accept the terms and conditions of all applicable Limited Use Label Licenses. Unless otherwise indicated, these products are for research use only and are not intended for human or animal diagnostic, therapeutic or commercial use.