

Product Data Sheet

Biotin anti-human CD195 (CCR5)

Catalog # / Size: 321404 / 100 µg

Clone: T21/8

Isotype: Mouse IgG1, κ

Immunogen: RBL-CCR5 cells

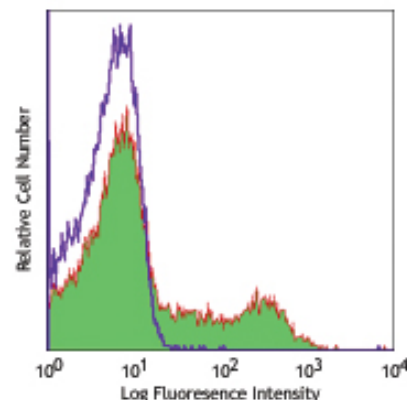
Reactivity: Human

Preparation: The antibody was purified by affinity chromatography, and conjugated with biotin under optimal conditions. The solution is free of unconjugated biotin.

Formulation: Phosphate-buffered solution, pH 7.2, containing 0.09% sodium azide.

Concentration: 0.5 mg/ml

Storage: The antibody solution should be stored undiluted at 4°C. **Do not freeze.**



Human peripheral blood lymphocytes stained with biotinylated T21/8, followed by Sav-PE

Applications:

Applications: FC - *Quality tested*
 IF - *Reported in the literature*

Recommended Usage: Each lot of this antibody is quality control tested by immunofluorescent staining with flow cytometric analysis. For immunofluorescent staining, the suggested use of this reagent is ≤2.0 µg per million cells in 100 µl volume. It is recommended that the reagent be titrated for optimal performance for each application.

Application Notes: Additional reported applications (for the relevant formats) include: immunofluorescence microscopy¹, and ELISA capture¹.

Application References: 1. Pollok-Kopp B, *et al.* 2003. *J. Biol. Chem.* 278:2190. (IF ELISA Capture)
 2. Huttenrauch F, *et al.* 2002. *J. Biol. Chem.* 277:30769. (FC)
 3. MondeK, *et al.* 2007. *J. Biol. Chem.* 282:36923. PubMed

Description: CD195, also known as CCR5, is a 45 kD G protein-coupled seven transmembrane CC-chemokine receptor. It binds to MIP-1α, MIP-1β, and RANTES and is expressed on a subset of T cells and monocytes. CD195 mediates an intracellular signal thought to induce differentiation and proliferation. CCR5 has also been shown to act as a co-receptor for R5 HIV-1 cell entry; modification of CCR5 by sulfation contributes to the efficiency of HIV-1 entry. The T21/8 monoclonal antibody has high affinity to CCR5 N-terminal epitope (Met1-Lys22) and is useful for flow cytometric analysis, immunoprecipitation, immunofluorescence microscopy, and ELISA assay of CCR5 expression.

Antigen References: 1. Samson M, *et al.* 1996. *Biochemistry* 35:3362.
 2. Raport CJ, *et al.* 1996. *J. Biol. Chem.* 271:17161.
 3. Combadiere C, *et al.* 1996. *J. Leukoc. Biol.* 60:147.
 4. Deng H, *et al.* 1996. *Nature* 381:661.

Related Products:

Product	Clone	Application
Biotin Mouse IgG1, κ Isotype Ctrl	MOPC-21	FC, ICFC
APC Streptavidin		FC, ICFC
PE Streptavidin		FC, ICFC
Cell Staining Buffer		FC, ICC, ICFC
Biotin anti-human CD195 (CCR5) Phospho (Ser337)	V14/2	ICFC, ELISA Detection, IF
Biotin anti-human CD195 (CCR5) Phospho (Ser349)	E11/19	ICFC ELISA Detection, IF
Human TruStain FcX™ (Fc Receptor Blocking Solution)		FC, ICC, ICFC



For research use only. Not for diagnostic use. Not for resale. BioLegend will not be held responsible for patent infringement or other violations that may occur with the use of our products.



*These products may be covered by one or more Limited Use Label Licenses (see the BioLegend Catalog or our website, www.biolegend.com/ordering#license). BioLegend products may not be transferred to third parties, resold, modified for resale, or used to manufacture commercial products, reverse engineer functionally similar materials, or to provide a service to third parties without written approval of BioLegend. By use of these products you accept the terms and conditions of all applicable Limited Use Label Licenses. Unless otherwise indicated, these products are for research use only and are not intended for human or animal diagnostic, therapeutic or commercial use.