

Product Data Sheet

FITC anti-human CD181 (CXCR1)

Catalog # / Size: 320605 / 25 tests
320606 / 100 tests

Clone: 8F1/CXCR1

Isotype: Mouse IgG2b, κ

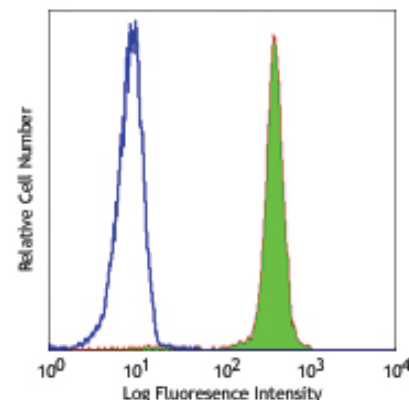
Immunogen: Human CXCR1 transfected L1.2 cells

Reactivity: Human

Preparation: The antibody was purified by affinity chromatography, and conjugated with FITC under optimal conditions. The solution is free of unconjugated FITC.

Formulation: Phosphate-buffered solution, pH 7.2, containing 0.09% sodium azide and 0.2% (w/v) BSA (origin USA).

Storage: The antibody solution should be stored undiluted at 4°C and protected from prolonged exposure to light. **Do not freeze.**



Human peripheral blood granulocytes stained with 8F1/CXCR1 FITC

Applications:

Applications: FC - Quality tested

Recommended Usage: Each lot of this antibody is quality control tested by immunofluorescent staining with flow cytometric analysis. **Test size products are transitioning from 20 μ l to 5 μ l per test.** Please check your vial or your CoA to find the suggested use of this reagent per million cells in 100 μ l staining volume or per 100 μ l of whole blood. It is recommended that the reagent be titrated for optimal performance for each application. Read more at www.biolegend.com/testsize regarding the test size change.

Application Notes: Additional reported applications (for the relevant formats) include: The 8F1/CXCR1 antibody is useful for immunofluorescent staining and flow cytometric analysis of CXCR1 expression.

Description: CXCR1 is a 67-70 kD seven-transmembrane protein, also known as IL-8 receptor A (IL-8RA), CD181, and CDw128a. It is a CXC chemokine receptor belongs to G protein-coupled receptor (GPCR) family. CXCR1 is expressed as homodimer or heterodimer with CXCR2 and found on granulocytes, NK cells, subset of T lymphocytes, mast cells, monocytes, endothelial cells, megakaryocytes, and oligodendrocytes. The expression level of CXCR1 on monocytes is lower than that of CXCR2. CXCR1 mediates neutrophil activation and chemotaxis, megakaryocytic proliferation, and angiogenesis via binding its ligands including IL-8(CXCL8), NAP-2(CXCL7), GCP-2(CXCL6), and GRO- α (CXCL1).

Antigen References:

1. Chuntharapai A, *et al.* 1994. *J. Immunol.* 153:5682.
2. Wilson S, *et al.* 2005. *J. Biol. Chem.* 280:28663.
3. Emadi S, *et al.* 2005. *Blood* 105:464.
4. Omari KM, *et al.* 2005. *Brain* 128:1003.
5. Juremalm M, G. Nilsson. 2005. *Chem. Immunol. Allergy.* 87:130.
6. Wolf M, *et al.* 1998. *Eur. J. Immunol.* 28:164

Related Products:

Product
FITC Mouse IgG2b, κ Isotype Ctrl
Cell Staining Buffer
Human TruStain FcX™ (Fc Receptor Blocking Solution)

Clone
MPC-11

Application
FC, ICFC
FC, ICC, ICFC
FC, ICC, ICFC



For research use only. Not for diagnostic use. Not for resale. BioLegend will not be held responsible for patent infringement or other violations that may occur with the use of our products.



*These products may be covered by one or more Limited Use Label Licenses (see the BioLegend Catalog or our website, www.biolegend.com/ordering#license). BioLegend products may not be transferred to third parties, resold, modified for resale, or used to manufacture commercial products, reverse engineer functionally similar materials, or to provide a service to third parties without written approval of BioLegend. By use of these products you accept the terms and conditions of all applicable Limited Use Label Licenses. Unless otherwise indicated, these products are for research use only and are not intended for human or animal diagnostic, therapeutic or commercial use.