

Product Data Sheet

Purified anti-human CD172g (SIRP γ)

Catalog # / Size: 336602 / 100 μ g

Clone: LSB2.20

Isotype: Mouse IgG1, κ

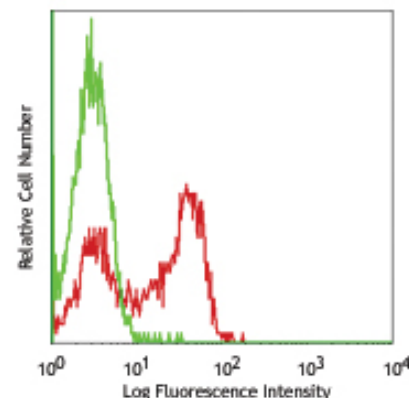
Reactivity: Human

Preparation: The antibody was purified by affinity chromatography.

Formulation: Phosphate-buffered solution, pH 7.2, containing 0.09% sodium azide.

Concentration: 0.5 mg/ml

Storage: The antibody solution should be stored undiluted at 4°C.



Human peripheral blood lymphocytes stained with purified LSB2.20, followed by anti-mouse IgG FITC

Applications:

Applications: FC - *Quality tested*
 IP - *Reported in the literature*

Recommended Usage: Each lot of this antibody is quality control tested by immunofluorescent staining with flow cytometric analysis. For immunofluorescent staining, the suggested use of this reagent is ≤ 2.0 μ g per 10^6 cells in 100 μ l volume or 100 μ l of whole blood. It is recommended that the reagent be titrated for optimal performance for each application.

Application Notes: Additional reported applications include: blocks T-cell transendothelial migration

Application References: 1. Stefanidakis M, *et al.* 2008. *Blood* 112:1280

Description: Signal Regulatory Proteins (SIRPs) comprise a family of several transmembrane glycoproteins (SIRP α , SIRP β , and SIRP γ) that belong to immunoglobulin superfamily. SIRP γ is also known as CD172g or SIRP β 2 which is primarily expressed on T cells and a subpopulation of B cells. Like CD172a, the ligand of CD172g is CD47. But the binding affinity with CD172g is lower than CD172a. The biological functions of CD172g include regulation of T-cell transendothelial migration and induction of T cell apoptosis.

Antigen References: 1. Zola H, *et al.* 2007. *Leukocyte and Stromal Cell Molecules: The CD Markers*
 2. Brooke G, *et al.* 2004. *J. Immunol.* 173:2562

Related Products:

Product
 Purified Mouse IgG1, κ Isotype Ctrl
 Cell Staining Buffer
 RBC Lysis Buffer (10X)

Clone
 MOPC-21

Application
 FC, ICFC, ICC, IF, IHC, IP, WB
 FC, ICC, ICFC
 FC, ICFC



For research use only. Not for diagnostic use. Not for resale. BioLegend will not be held responsible for patent infringement or other violations that may occur with the use of our products.



*These products may be covered by one or more Limited Use Label Licenses (see the BioLegend Catalog or our website, www.biollegend.com/ordering#license). BioLegend products may not be transferred to third parties, resold, modified for resale, or used to manufacture commercial products, reverse engineer functionally similar materials, or to provide a service to third parties without written approval of BioLegend. By use of these products you accept the terms and conditions of all applicable Limited Use Label Licenses. Unless otherwise indicated, these products are for research use only and are not intended for human or animal diagnostic, therapeutic or commercial use.