

Product Data Sheet

PE anti-human CD163

Catalog # / Size: 333605 / 25 tests
333606 / 100 tests

Clone: GHI/61

Isotype: Mouse IgG1, κ

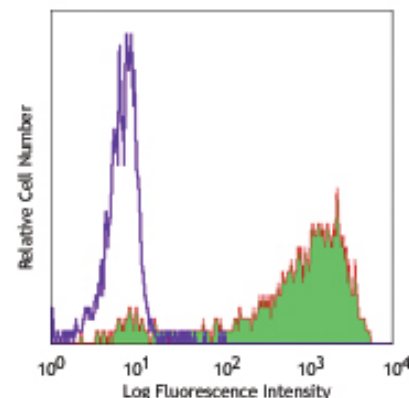
Workshop Number: VI M38

Reactivity: Human, **Cross-Reactivity:** Rhesus

Preparation: The antibody was purified by affinity chromatography, and conjugated with PE under optimal conditions. The solution is free of unconjugated PE and unconjugated antibody.

Formulation: Phosphate-buffered solution, pH 7.2, containing 0.09% sodium azide and 0.2% (w/v) BSA (origin USA).

Storage: The antibody solution should be stored undiluted at 4°C and protected from prolonged exposure to light. **Do not freeze.**



Human peripheral blood monocytes
stained with GHI/61 PE

Applications:

Applications: FC - Quality tested

Recommended Usage: Each lot of this antibody is quality control tested by immunofluorescent staining with flow cytometric analysis. **Test size products are transitioning from 20 μ l to 5 μ l per test.** Please check your vial or your CoA to find the suggested use of this reagent per million cells in 100 μ l staining volume or per 100 μ l of whole blood. It is recommended that the reagent be titrated for optimal performance for each application. Read more at www.biolegend.com/testsize regarding the test size change.

Application Notes: Clone GHI/61 binds to domain 7 of CD163. Additional reported applications (for the relevant formats) include: immunoprecipitation¹.

Application References:

1. Pulford K, *et al.* 1992. *Immunology* 75:588. (IP)
2. Law SK, *et al.* 1993. *Eur. J. Immunol.* 23:2320.
3. Madsen M, *et al.* 2004. *J. Biol. Chem.* 279:51561.
4. Kim WK, *et al.* 2006. *Am. J. Pathol.* 168:822. (FC)

Description: CD163 is a member of the group B scavenger receptor cysteine-rich superfamily, also known as GHI/61, M130, RM3/1, p155, Hemoglobin-Haptoglobin Complex Receptor, or macrophage-associated antigen. It is a 134 kD (non-reduced)/155 kD (reduced) glycoprotein primarily expressed on macrophages, Kuffer cells, monocytes, subset of dendritic cells, and a subset of hematopoietic stem/progenitor cells. CD163 binds to haptoglobin-hemoglobin complex and TWEAK, and plays a role in clearing hemoglobin and regulating cytokine production by macrophages. Membrane CD163 can be cleaved by metalloproteinases (MMP) resulting in soluble form. Elevated serum level of sCD163 has been implicated in many kinds of inflammation diseases.

Antigen References:

1. Roth J, *et al.* 1994 *Transplantation.* 57:127
2. Van den Heuvel MM, *et al.* 1999 *J. Leukoc. Biol.* 66:858
3. Sulahian TH, *et al.* 2000 *Cytokines* 12:1312
4. Fabrik BO, *et al.* 2007 *J. Neuroimmunol.* 187:179

Related Products:

Product	Clone	Application
PE Mouse IgG1, κ Isotype Ctrl	MOPC-21	FC, ICFC
Cell Staining Buffer		FC, ICC, ICFC
RBC Lysis Buffer (10X)		FC, ICFC
Human TruStain FcX™ (Fc Receptor Blocking Solution)		FC, ICC, ICFC



For research use only. Not for diagnostic use. Not for resale. BioLegend will not be held responsible for patent infringement or other violations that may occur with the use of our products.



*These products may be covered by one or more Limited Use Label Licenses (see the BioLegend Catalog or our website, www.biolegend.com/ordering#license). BioLegend products may not be transferred to third parties, resold, modified for resale, or used to manufacture commercial products, reverse engineer functionally similar materials, or to provide a service to third parties without written approval of BioLegend. By use of these products you accept the terms and conditions of all applicable Limited Use Label Licenses. Unless otherwise indicated, these products are for research use only and are not intended for human or animal diagnostic, therapeutic or commercial use.