

FITC anti-human CD177

Catalog # / Size: 315803 / 25 tests
315804 / 100 tests

Clone: MEM-166

Isotype: Mouse IgG1, κ

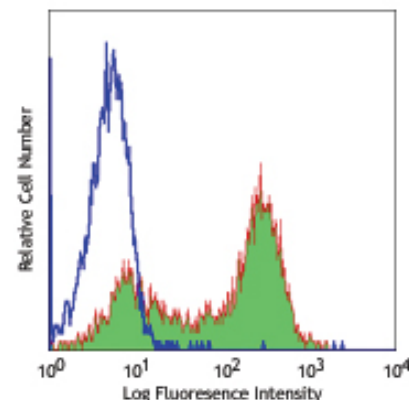
Immunogen: Human granulocytes

Reactivity: Human, **Cross-Reactivity:** Rhesus

Preparation: The antibody was purified by affinity chromatography, and conjugated with FITC under optimal conditions. The solution is free of unconjugated FITC.

Formulation: Phosphate-buffered solution, pH 7.2, containing 0.09% sodium azide and 0.2% (w/v) BSA (origin USA).

Storage: The antibody solution should be stored undiluted at 4°C and protected from prolonged exposure to light. **Do not freeze.**



Human peripheral blood granulocytes stained with MEM-166 FITC

Applications:

Applications: FC - Quality tested

Recommended Usage: Each lot of this antibody is quality control tested by immunofluorescent staining with flow cytometric analysis. **Test size products are transitioning from 20 μ l to 5 μ l per test.** Please check your vial or your CoA to find the suggested use of this reagent per million cells in 100 μ l staining volume or per 100 μ l of whole blood. It is recommended that the reagent be titrated for optimal performance for each application. Read more at www.biolegend.com/testsize regarding the test size change.

Application Notes: Additional reported applications (for the relevant formats) include: immunoprecipitation, Western blotting⁵, and immunofluorescence⁴.

Application References:

1. Leucocyte Typing VII. Mason D, *et al.* Eds, 2002 Oxford University Press.
2. von Vietinghoff S, *et al.* 2007. *Blood* 109:4487. PubMed
3. Korkmaz B, *et al.* 2008. *J. Biol. Chem.* 283:35976. PubMed
4. von Vietinghoff S, *et al.* 2007. *Blood* 109:4487. (IF)
5. Jankowska AM, *et al.* 2011. *Haematologica.* 96:954. (WB)

Description: CD177 is also known as neutrophil specific antigen 1, NB1, and polycythemia rubra vera 1. It is a member of the uPAR family and is a GPI-linked cell surface glycoprotein with a molecular weight of 60 kD. CD177 is expressed on granulocytes and bone marrow progenitors (early erythroblasts, megakaryocytes). It is thought to be involved in allogeneic and autoimmune responses to neutrophils.

Antigen References:

1. Leukocyte Typing VII. Mason D, *et al.* (Eds.) Oxford University Press (2002)
2. Kissel K, *et al.* 2001. *Eur. J. Immunol.* 31:1301.
3. Lalezari P, *et al.* 1971. *J. Clin. Invest.* 50:1108.
4. Temerinac S, *et al.* 2000. *Blood* 95:2569.

Related Products:

Product	Clone	Application
FITC Mouse IgG1, κ Isotype Ctrl	MOPC-21	FC, ICFC
Cell Staining Buffer		FC, ICC, ICFC
RBC Lysis Buffer (10X)		FC, ICFC
Human TruStain FcX™ (Fc Receptor Blocking Solution)		FC, ICC, ICFC



For research use only. Not for diagnostic use. Not for resale. BioLegend will not be held responsible for patent infringement or other violations that may occur with the use of our products.



*These products may be covered by one or more Limited Use Label Licenses (see the BioLegend Catalog or our website, www.biolegend.com/ordering#license). BioLegend products may not be transferred to third parties, resold, modified for resale, or used to manufacture commercial products, reverse engineer functionally similar materials, or to provide a service to third parties without written approval of BioLegend. By use of these products you accept the terms and conditions of all applicable Limited Use Label Licenses. Unless otherwise indicated, these products are for research use only and are not intended for human or animal diagnostic, therapeutic or commercial use.