

Product Data Sheet

LEAF™ Purified anti-human CD119 (IFN-γ R α chain)

Catalog # / Size: 308604 / 500 µg

Clone: GIR-208

Isotype: Mouse IgG1, κ

Workshop Number: VI C-110

Immunogen: Human IFN-γRα, Purified from human placenta

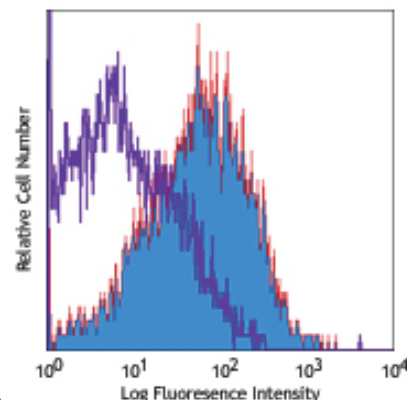
Reactivity: Human

Preparation: The LEAF™ (Low Endotoxin, Azide-Free) antibody was purified by affinity chromatography.

Formulation: 0.2 µm filtered in phosphate-buffered solution, pH 7.2, containing no preservative. Endotoxin level is <0.1 EU/µg of the protein (<0.01 ng/µg of the protein) as determined by the LAL test.

Concentration: 1.0 mg/ml

Storage: The antibody solution should be stored undiluted at 4°C. This LEAF™ solution contains no preservative; handle under aseptic conditions.



Human peripheral blood lymphocytes stained with LEAF™ purified GIR-208, detected with biotinylated anti-mouse IgGs and Sav-PE

Applications:

Applications: FC - *Quality tested*
 WB, IP, Block, IHC - *Reported in the literature*

Recommended Usage: Each lot of this antibody is quality control tested by immunofluorescent staining with flow cytometric analysis. For immunofluorescent staining, the suggested use of this reagent is ≤0.5 µg per million cells in 100 µl volume or 100 µl of whole blood. It is recommended that the reagent be titrated for optimal performance for each application.

Application Notes: Additional reported applications (for the relevant formats) include: Western blotting¹ under non-reducing conditions, immunoprecipitation¹, immunohistochemistry³ of snap frozen sections, and blocking¹ of IFN-γ binding to IFN-γ R α chain. For most successful immunofluorescent staining results, it may be important to maximize signal over background by using a relatively bright fluorochrome-antibody conjugate (Cat. No. 308606) or by using a high sensitivity, three-layer staining technique (e.g., including a biotinylated anti-mouse IgG second step (Cat. No. 405303), followed by SAV-PE (Cat. No. 405204)). The LEAF™ Purified antibody (Endotoxin <0.1 EU/µg, Azide-Free, 0.2 µm filtered) is recommended for functional assays (Cat. No. 308604).

Application References: 1. Sheehan K, *et al.* 1988. *J. Immunol.* 140:4231. (WB IP Block)
 2. Kishimoto T, *et al.* Eds. 1997. *Leucocyte Typing VI*. Garland Publishing Inc. London.
 3. Peyman JA, *et al.* 1992. *J. Immunol.* 149:2675. (IHC)

Description: CDw119 is a 90-100 kD type I transmembrane protein, also known as IFN-γ R α chain or IFN-γRI. The IFN-γ receptor is a complex of a high affinity IFN-γ-binding chain (aka, IFN-γ R α chain) and a second accessory protein required for signal transduction known as IFN-γ R β chain. The IFN-γ R α chain is a member of the class II cytokine receptor family. Binding of IFN-γ induces receptor dimerization and internalization. Signal transduction involves Jak1 and Jak2 protein kinases and involves STAT1 activation. The IFN-γ receptor is expressed at moderate levels on virtually every cell with the exception of erythrocytes.

Antigen References: 1. Calderon J, *et al.* 1988. *P. Natl. Acad. Sci. USA* 85:4837.
 2. Basler C, *et al.* 2002. *Int. Rev. Immunol.* 21:305.
 3. Brierley M, *et al.* 2002. *J. Interferon Cytokine Res.* 22:835.

Related Products:	Product	Clone	Application
	LEAF™ Purified Mouse IgG1, κ Isotype Ctrl	MOPC-21	FC, ICFC, WB, IP, ICC, IF, FA
	Cell Staining Buffer		FC, ICC, ICFC
	RBC Lysis Buffer (10X)		FC, ICFC
	LEAF™ Purified anti-human IFN-γ R β chain	2HUB-159	FC, IP, WB



For research use only. Not for diagnostic use. Not for resale. BioLegend will not be held responsible for patent infringement or other violations that may occur with the use of our products.



*These products may be covered by one or more Limited Use Label Licenses (see the BioLegend Catalog or our website, www.biolegend.com/ordering#license). BioLegend products may not be transferred to third parties, resold, modified for resale, or used to manufacture commercial products, reverse engineer functionally similar materials, or to provide a service to third parties without written approval of BioLegend. By use of these products you accept the terms and conditions of all applicable Limited Use Label Licenses. Unless otherwise indicated, these products are for research use only and are not intended for human or animal diagnostic, therapeutic or commercial use.