

## FITC anti-human CD123

**Catalog # / Size:** 306013 / 25 tests  
306014 / 100 tests

**Clone:** 6H6

**Isotype:** Mouse IgG1,  $\kappa$

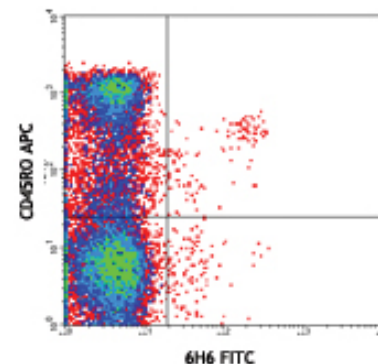
**Immunogen:** Human IL-3R $\alpha$  transfected COS cells

**Reactivity:** Human, **Cross-Reactivity:** Rhesus

**Preparation:** The antibody was purified by affinity chromatography, and conjugated with FITC under optimal conditions. The solution is free of unconjugated FITC.

**Formulation:** Phosphate-buffered solution, pH 7.2, containing 0.09% sodium azide and 0.2% (w/v) BSA (origin USA).

**Storage:** The antibody solution should be stored undiluted at 4°C and protected from prolonged exposure to light. **Do not freeze.**



Human peripheral blood leukocytes stained with CD45RO APC and 6H6 FITC (gated on lymphocyte population)

## Applications:

**Applications:** FC - Quality tested

**Recommended Usage:** Each lot of this antibody is quality control tested by immunofluorescent staining with flow cytometric analysis. **Test size products are transitioning from 20  $\mu$ l to 5  $\mu$ l per test.** Please check your vial or your CoA to find the suggested use of this reagent per million cells in 100  $\mu$ l staining volume or per 100  $\mu$ l of whole blood. It is recommended that the reagent be titrated for optimal performance for each application. Read more at [www.biolegend.com/testsize](http://www.biolegend.com/testsize) regarding the test size change.

**Application Notes:** 6H6 antibody does not inhibit IL-3 binding to low- or high-affinity IL-3Rs. Additional reported applications (for the relevant formats) include: Western blotting<sup>1</sup>, immunoprecipitation<sup>1</sup>, and immunohistochemical staining of acetone-fixed frozen sections<sup>2</sup>.

**Application References:**

1. Sun Q, *et al.* 1996. *Blood* 87:83. (IP, WB)
2. Herling M, *et al.* 2003. *Blood* 101:5007. (IHC)
3. Charles N, *et al.* 2010. *Nat. Med.* 16:701. (FC) PubMed
4. Martin-Gayo E, *et al.* 2010. *Blood* 115:5366. PubMed

**Description:** CD123 is the 70 kD transmembrane  $\alpha$  chain of the IL-3 receptor. Alone, CD123 binds IL-3 with low affinity; when CD123 associates with CDw131 (common  $\beta$  chain), it binds IL-3 with high affinity. CD123 does not transduce intracellular signals upon binding IL-3 and requires the  $\beta$  chain for this function. CD123 is expressed by myeloid precursors, macrophages, dendritic cells, mast cells, basophils, megakaryocytes, and some B cells.

**Antigen References:** 1. Miyajima A, *et al.* 1993. *Blood* 82:1960.

### Related Products:

Product	Clone	Application
Cell Staining Buffer		FC, ICC, ICFC
FITC Mouse IgG1, $\kappa$ Isotype Ctrl (FC)	MOPC-21	FC
Human TruStain FcX™ (Fc Receptor Blocking Solution)		FC, ICC, ICFC



For research use only. Not for diagnostic use. Not for resale. BioLegend will not be held responsible for patent infringement or other violations that may occur with the use of our products.



\*These products may be covered by one or more Limited Use Label Licenses (see the BioLegend Catalog or our website, [www.biolegend.com/ordering#license](http://www.biolegend.com/ordering#license)). BioLegend products may not be transferred to third parties, resold, modified for resale, or used to manufacture commercial products, reverse engineer functionally similar materials, or to provide a service to third parties without written approval of BioLegend. By use of these products you accept the terms and conditions of all applicable Limited Use Label Licenses. Unless otherwise indicated, these products are for research use only and are not intended for human or animal diagnostic, therapeutic or commercial use.