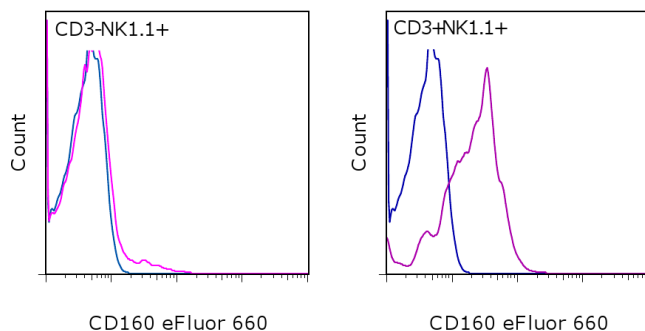


Anti-Mouse CD160 eFluor® 660 (Alexa® 647 Replacement)

Catalog Number: 50-1601

Also known as: By55

RUO: For Research Use Only. Not for use in diagnostic procedures.



Staining of C57Bl/6 splenocytes with Anti-Mouse CD3 FITC (11-0031), Anti-Mouse NK1.1 PE (cat. 12-5941) and 0.5 ug of Rat IgG2a K Isotype Control eFluor® 660 (cat. 50-4321) (blue histogram) or 0.5 ug of Anti-Mouse CD160 eFluor® 660 (purple histogram). Cells in the lymphocyte gate were used for analysis.

Product Information

Contents: Anti-Mouse CD160 eFluor® 660 (Alexa® 647 Replacement)

Catalog Number: 50-1601

Clone: CNX46-3

Concentration: 0.2 mg/mL

Host/Isotype: Rat IgG2a, kappa

Formulation: aqueous buffer, 0.09% sodium azide, may contain carrier protein/stabilizer

Temperature Limitation: Store at 2-8°C. Do not freeze. Light-sensitive material.

Batch Code: Refer to vial

Use By: Refer to vial

Contains sodium azide



Description

CD160 is a glycosylphosphatidylinositol (GPI)-anchored Ig-like glycoprotein first identified on human lymphocytes with the monoclonal antibody BY55. In mice, CD160 is expressed on almost all (intestinal intraepithelial lymphocytes) iIELs, NKT cells, most TCRγδ T cells, few NK cells and a minor subset of CD8+ T cells. Murine CD160 has been shown to bind to a wide range of classical and non classical MHC class I molecules and regulate NK cell activation. In vitro, CD3 activation of murine CD8+ T cells increases the expression of CD160 and induces the release of soluble CD160 (sCD160). In human, CD160 mAb cross-linking triggers TNF alpha, IFN gamma and IL-6 cytokine production by peripheral blood NK cells and inhibits tube formation and induces apoptosis of endothelial cells. In mice, cross-linking of CD160 with the CNX46-3 antibody regulates NK cell activation both positively and negatively, depending on the stimulus.

Applications Reported

This CNX46-3 antibody has been reported for use in flow cytometric analysis.

Applications Tested

This CNX46-3 antibody has been tested by flow cytometric analysis of mouse splenocytes. This can be used at less than or equal to 1 µg per test. A test is defined as the amount (µg) of antibody that will stain a cell sample in a final volume of 100 µL. Cell number should be determined empirically but can range from 10⁵ to 10⁸ cells/test. It is recommended that the antibody be carefully titrated for optimal performance in the assay of interest.

eFluor® 660 is a replacement for Alexa Fluor® 647. eFluor® 660 emits at 659 nm and is excited with the red laser (633 nm). Please make sure that your instrument is capable of detecting this fluorochrome.

References

Fons P, Chabot S, Cartwright JE, Lenfant F, L'Faqihi F, Giustiniani J, Herault JP, Gueguen G, Bono F, Savi P, Aguerre-Girr M, Fournel S, Malecaze F, Bensussan A, Plouët J, Le Bouteiller P. Soluble HLA-G1 inhibits angiogenesis through an apoptotic pathway and by direct binding to CD160 receptor expressed by endothelial cells. Blood. 2006 Oct 15;108(8):2608-15.

Not for further distribution without written consent.

Copyright © 2000-2012 eBioscience, Inc.

Tel: 888.999.1371 or 858.642.2058 • Fax: 858.642.2046 • www.ebioscience.com • info@ebioscience.com

Anti-Mouse CD160 eFluor® 660 (Alexa® 647 Replacement)

Catalog Number: 50-1601

Also known as: By55

RUO: For Research Use Only. Not for use in diagnostic procedures.

Tsujimura K, Obata Y, Matsudaira Y, Nishida K, Akatsuka Y, Ito Y, Demachi-Okamura A, Kuzushima K, Takahashi T. Characterization of murine CD160+ CD8+ T lymphocytes. *Immunol Lett.* 2006 Jul 15;106(1):48-56.

Maeda M, Carpenito C, Russell RC, Dasanji J, Veinotte LL, Ohta H, Yamamura T, Tan R, Takei F. Murine CD160, Ig-like receptor on NK cells and NKT cells, recognizes classical and nonclassical MHC class I and regulates NK cell activation. *J Immunol.* 2005 Oct 1;175(7):4426-32.(CNX46-3, FC, IP, WB, FA PubMed)

Barakonyi A, Rabot M, Marie-Cardine A, Aguerre-Girr M, Polgar B, Schiavon V, Bensussan A, Le Bouteiller P. Cutting edge: engagement of CD160 by its HLA-C physiological ligand triggers a unique cytokine profile secretion in the cytotoxic peripheral blood NK cell subset. *J Immunol.* 2004 Nov 1;173(9):5349-54.

Anumanthan A, Bensussan A, Boumsell L, Christ AD, Blumberg RS, Voss SD, Patel AT, Robertson MJ, Nadler LM, Freeman GJ. Cloning of BY55, a novel Ig superfamily member expressed on NK cells, CTL, and intestinal intraepithelial lymphocytes. *J Immunol.* 1998 Sep 15;161(6):2780-90.

Related Products

11-0031 Anti-Mouse CD3e FITC (145-2C11)

12-5941 Anti-Mouse NK1.1 PE (PK136)

50-4321 Rat IgG2a K Isotype Control eFluor® 660 (eBR2a)