

Product Data Sheet

PE anti-human CD88 (C5aR)

Catalog # / Size: 344303 / 25 tests
344304 / 100 tests

Clone: S5/1

Isotype: Mouse IgG2a, κ

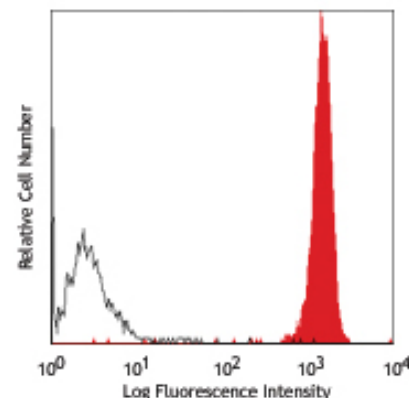
Immunogen: Recombinant peptide huC5aR N-terminal -NT (Asp15-Asp27)

Reactivity: Human

Preparation: The antibody was purified by affinity chromatography, and conjugated with PE under optimal conditions. The solution is free of unconjugated PE and unconjugated antibody.

Formulation: Phosphate-buffered solution, pH 7.2, containing 0.09% sodium azide and 0.2% (w/v) BSA (origin USA).

Storage: The antibody solution should be stored undiluted at 4°C and protected from prolonged exposure to light. **Do not freeze.**



Human peripheral blood granulocytes stained with S5/1 PE

Applications:

Applications: FC - Quality tested

Recommended Usage: Each lot of this antibody is quality control tested by immunofluorescent staining with flow cytometric analysis. **Test size products are transitioning from 20 μ l to 5 μ l per test.** Please check your vial or your CoA to find the suggested use of this reagent per million cells in 100 μ l staining volume or per 100 μ l of whole blood. It is recommended that the reagent be titrated for optimal performance for each application. Read more at www.biolegend.com/testsize regarding the test size change.

Application Notes: Clone S5/1 blocks the binding of C5a to CD88.

Application References:

1. Kiener HP, *et al.* 1998. *Arthritis Rheum.* 41:233.
2. Elsner J, *et al.* 1994. *Blood* 83:3324.
3. Oppermann M, *et al.* 1993. *J. Immunol.* 151:3785.
4. Li K, *et al.* 2012. *Immunobiology.* 217:65. PubMed.

Description: CD88 is a single chain protein with seven membrane-spanning regions and has a MW of 43 kD. CD88 is expressed by monocytes, neutrophils and eosinophils. Also, there have been reports of CD88 expression in non-immune cells such as glial cells, cerebellar granule cells, cardiomyocytes and vascular endothelial cells. CD88 is coupled to heterotrimeric G proteins such as Gi, and after C5a binding, the signal transduced by CD88 results in the activation of PLC β , PI-3 kinase, and PLA2, among other molecules, resulting in chemotaxis, granule enzyme release and superoxide anion production.

Antigen References:

1. Schraufstatter IU, *et al.* 2009. *J. Immunol.* 182:3827.
2. Ippel JH, *et al.* 2009. *J. Biol Chem.* 284:12363.
3. Griffin RS, *et al.* 2007. *J. Neurosci.* 27:8699.
4. Lee H, *et al.* 2006. *Nat. Biotechnol.* 24:1279.
5. Buck E and Wells JA. *et al.* 2005. *P. Natl. Acad. Sci. USA* 102:2719.

Related Products:

Product	Clone	Application
PE Mouse IgG2a, κ Isotype Ctrl	MOPC-173	FC, ICFC
Cell Staining Buffer		FC, ICC, ICFC
RBC Lysis Buffer (10X)		FC, ICFC
Human TruStain FcX™ (Fc Receptor Blocking Solution)		FC, ICC, ICFC



For research use only. Not for diagnostic use. Not for resale. BioLegend will not be held responsible for patent infringement or other violations that may occur with the use of our products.



*These products may be covered by one or more Limited Use Label Licenses (see the BioLegend Catalog or our website, www.biolegend.com/ordering#license). BioLegend products may not be transferred to third parties, resold, modified for resale, or used to manufacture commercial products, reverse engineer functionally similar materials, or to provide a service to third parties without written approval of BioLegend. By use of these products you accept the terms and conditions of all applicable Limited Use Label Licenses. Unless otherwise indicated, these products are for research use only and are not intended for human or animal diagnostic, therapeutic or commercial use.