

# Product Data Sheet

## LEAF™ Purified anti-human CD90 (Thy1)

**Catalog # / Size:** 328104 / 500 µg

**Clone:** 5E10

**Isotype:** Mouse IgG1, κ

**Immunogen:** HEL cells

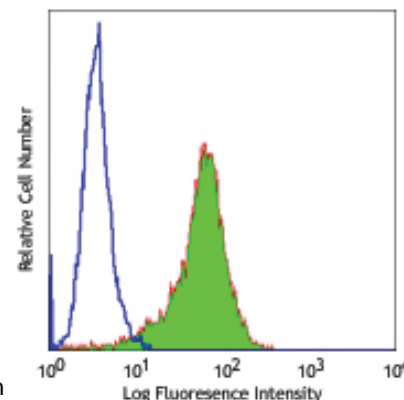
**Reactivity:** Human, **Cross-Reactivity:** Baboon, Cynomolgus, Rhesus, Pigtailed Macaque, Pig<sup>2</sup>

**Preparation:** The LEAF™ (Low Endotoxin, Azide-Free) antibody was purified by affinity chromatography.

**Formulation:** 0.2 µm filtered in phosphate-buffered solution, pH 7.2, containing no preservative. Endotoxin level is <0.1 EU/µg of the protein (<0.01 ng/µg of the protein) as determined by the LAL test.

**Concentration:** 1.0 mg/ml

**Storage:** The antibody solution should be stored undiluted at 4°C. This LEAF™ solution contains no preservative; handle under aseptic conditions.



Human erythroleukemic cell line HEL stained with LEAF™ purified 5E10, followed by anti-mouse IgG FITC

## Applications:

**Applications:** FC - *Quality tested*  
 IHC, IP, FA - *Reported in the literature*  
 CyTOF® - *Validated*

**Recommended Usage:** Each lot of this antibody is quality control tested by immunofluorescent staining with flow cytometric analysis. For immunofluorescent staining, the suggested use of this reagent is ≤0.5 µg per million cells in 100 µl volume or 100 µl of whole blood. It is recommended that the reagent be titrated for optimal performance for each application.

**Application Notes:** Additional reported (for the relevant formats) applications include: immunohistochemical staining of acetone-fixed frozen sections and immunoprecipitation<sup>1</sup>.

**Application References:** 1. Craig W, *et al.* 1993. *J. Exp. Med.* 177:1331.  
 2. Gundlach CW 4th, *et al.* 2011. *Bioconj. Chem.* 22:1706.

**Description:** CD90 is a 25-35 kD GPI-anchored protein, also known as Thy-1. It belongs to Ig superfamily. Human CD90 is expressed on neuronal cells, a subset of CD34<sup>+</sup> cells, a subset of fetal liver cells and fetal thymocytes, fibroblasts, activated endothelial cells, and some leukemia cell lines. CD34<sup>+</sup>CD90<sup>+</sup> cells are primitive hematopoietic stem cells. It has been reported that Thy-1 binds with β2 and β3 integrins and plays bimodal roles in the regulation of cell adhesion and neurite outgrowth, and inhibits hematopoietic stem cells proliferation and differentiation.

**Antigen References:** 1. McKenzie JL, *et al.* 1981. *J. Immunol.* 126:843.  
 2. Avalos AM, *et al.* 2002. *Biol. Res.* 35:231.  
 3. Wetzel A, *et al.* 2004. *J. Immunol.* 172:3850.

### Related Products:

Product	Clone	Application
APC Goat anti-mouse IgG (minimal x-reactivity)	Poly4053	FC
LEAF™ Purified Mouse IgG1, κ Isotype Ctrl	MOPC-21	FC, ICFC, WB, IP, ICC, IF, FA
PE Goat anti-mouse IgG (minimal x-reactivity)	Poly4053	FC
Cell Staining Buffer		FC, ICC, ICFC
RBC Lysis Buffer (10X)		FC, ICFC
LEAF™ Purified Mouse IgG1, κ Isotype Ctrl	MG1-45	FC, ICFC, WB, IP, ICC, IF, FA



For research use only. Not for diagnostic use. Not for resale. BioLegend will not be held responsible for patent infringement or other violations that may occur with the use of our products.



\*These products may be covered by one or more Limited Use Label Licenses (see the BioLegend Catalog or our website, [www.biolegend.com/ordering#license](http://www.biolegend.com/ordering#license)). BioLegend products may not be transferred to third parties, resold, modified for resale, or used to manufacture commercial products, reverse engineer functionally similar materials, or to provide a service to third parties without written approval of BioLegend. By use of these products you accept the terms and conditions of all applicable Limited Use Label Licenses. Unless otherwise indicated, these products are for research use only and are not intended for human or animal diagnostic, therapeutic or commercial use.