

# Product Data Sheet

## Purified anti-human CD85h (ILT1)

**Catalog # / Size:** 337902 / 100 µg

**Clone:** 24

**Isotype:** Mouse IgG2b, κ

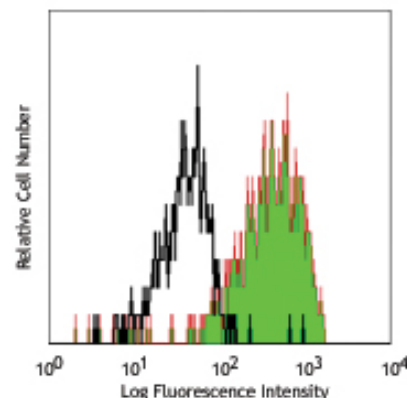
**Reactivity:** Human

**Preparation:** The antibody was purified by affinity chromatography.

**Formulation:** Phosphate-buffered solution, pH 7.2, containing 0.09% sodium azide.

**Concentration:** 0.5 mg/ml

**Storage:** The antibody solution should be stored undiluted at 4°C.



Human peripheral blood monocytes stained with purified clone 24, followed by anti-mouse IgG biotin and Sav-PE

## Applications:

**Applications:** FC - Quality tested

**Recommended Usage:** Each lot of this antibody is quality control tested by immunofluorescent staining with flow cytometric analysis. For immunofluorescent staining, the suggested use of this reagent is ≤2.0 µg per million cells in 100 µl volume. It is recommended that the reagent be titrated for optimal performance for each application.

**Application Notes:** Additional reported applications include: immunohistochemical staining of acetone-fixed frozen tissue sections, Costimulation and activation of myeloid cells skewing of dendritic cell differentiation

**Application References:** 1. Lee DJ, *et al.* 2007 *J. Immunol.* 179 8128.

**Description:** CD85 is a group of Ig superfamily transmembrane glycoproteins called Ig-Like Transcripts (ILTs) or Leukocyte Immunoglobulin-like Receptors (LIRs). It is composed of both activating and inhibitory isoforms. The activating subset of ILTs is characterized by containing short cytoplasmic domains and positively charged arginine residues, while the inhibitory isoforms display long cytoplasmic tails containing ITIM motifs. CD85h is a 69kD activating receptor, also known as ILT1, LIR-7, or LILRA2. ILT1 is found on the surface of monocytes/macrophages, dendritic cells, and at relatively low levels on granulocytes. It is also expression on a small subset of NK cells. ILT1 acts as an activating receptor through its association with Fc receptor γ chain.

**Antigen References:** 1. Tedla N, *et al.* 2003. *Proc. Natl. Acad. Sci.* 100:1174  
 2. Nakajima H, *et al.* 1999. *J. Immunol.* 162:5

### Related Products:

**Product**  
 Purified Mouse IgG2b, κ Isotype Ctrl  
 Cell Staining Buffer  
 RBC Lysis Buffer (10X)

**Clone**  
 MG2b-57

**Application**  
 FC, ICC, ICFC, IF, IHC, IP, WB  
 FC, ICC, ICFC  
 FC, ICFC



For research use only. Not for diagnostic use. Not for resale. BioLegend will not be held responsible for patent infringement or other violations that may occur with the use of our products.



\*These products may be covered by one or more Limited Use Label Licenses (see the BioLegend Catalog or our website, [www.biolegend.com/ordering#license](http://www.biolegend.com/ordering#license)). BioLegend products may not be transferred to third parties, resold, modified for resale, or used to manufacture commercial products, reverse engineer functionally similar materials, or to provide a service to third parties without written approval of BioLegend. By use of these products you accept the terms and conditions of all applicable Limited Use Label Licenses. Unless otherwise indicated, these products are for research use only and are not intended for human or animal diagnostic, therapeutic or commercial use.

BioLegend Inc., 9727 Pacific Heights Blvd, San Diego, CA 92121 [www.biolegend.com](http://www.biolegend.com)  
 Toll-Free Phone: 1-877-Bio-Legend (246-5343) Phone: (858) 768-5800 Fax: (877) 455-9587