

Product Data Sheet

Purified anti-human CD75

Catalog # / Size: 326901 / 25 µg

Clone: LN1

Isotype: Mouse IgM, κ

Immunogen: Human PBL nuclei

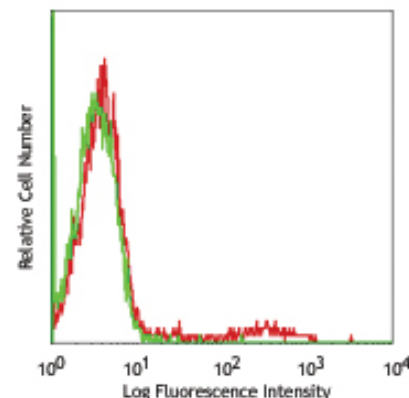
Reactivity: Human

Preparation: This antibody is at >85% purity.

Formulation: Phosphate-buffered solution, pH 7.2, containing 0.09% sodium azide.

Concentration: 0.5 mg/ml

Storage: The antibody solution should be stored undiluted at 4°C.



Human peripheral blood lymphocytes stained with purified LN1, followed by anti-mouse Igs FITC

Applications:

Applications: FC - *Quality tested*
IHC, WB - *Reported in the literature*

Recommended Usage: Each lot of this antibody is quality control tested by immunofluorescent staining with flow cytometric analysis. For immunofluorescent staining, the suggested use of this reagent is ≤ 2.0 µg per 10⁶ cells in 100 µl volume or 100 µl whole blood. It is recommended that the reagent be titrated for optimal performance for each application.

Application Notes: Additional reported applications (for the relevant formats) include: immunohistochemical staining^{1,2} of frozen sections and formalin-fixed paraffin-embedded sections, and Western blotting³.

Application References: 1. Epstein AL, *et al.* 1984. *J. Immunol.* 133:1028. (IHC)
2. Marder RJ, *et al.* 1985. *Lab. Invest.* 52:497. (IHC)
3. Kramer G, *et al.* 2004. *BJU Int.* 93:822. (WB)

Description: CD75 is a 43-85 kD type II transmembrane sialyltransferase protein, also known as beta-galactoside alpha-2,6-sialyltransferase. It is a member of glycosyltransferase family that transfers sialic acid from a donor substrate (CMP-sialic acid) to terminal galactose on glycan chains. CD75 is predominately expressed on germinal center originated B cells and lymphomas. It is also found on mature slg⁺ B cells and epithelial cells of lung, breast, kidney, and prostate.

Antigen References: 1. Epstein AL, *et al.* 1984. *J. Immunol.* 133:1028.
2. Kramer G, *et al.* 2004. *BJU Int.* 93:822.
3. Zola H, *et al.* 2007. *Leukocyte and Stromal Cell Molecules: The CD Markers* Wiley-Liss A John Wiley & Sons Inc, Publication

Related Products:	Product	Clone	Application
	Cell Staining Buffer		FC, ICC, ICFC
	Purified Mouse IgM, κ Isotype Ctrl	MM-30	FC, ICFC, ICC, IF



For research use only. Not for diagnostic use. Not for resale. BioLegend will not be held responsible for patent infringement or other violations that may occur with the use of our products.



*These products may be covered by one or more Limited Use Label Licenses (see the BioLegend Catalog or our website, www.biollegend.com/ordering#license). BioLegend products may not be transferred to third parties, resold, modified for resale, or used to manufacture commercial products, reverse engineer functionally similar materials, or to provide a service to third parties without written approval of BioLegend. By use of these products you accept the terms and conditions of all applicable Limited Use Label Licenses. Unless otherwise indicated, these products are for research use only and are not intended for human or animal diagnostic, therapeutic or commercial use.