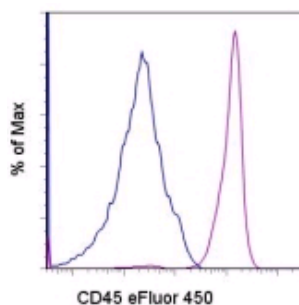


## Anti-Human CD45 eFluor® 450 (Pacific Blue® replacement)

Catalog Number: 48-9459

Also Known As: LCA

RUO: For Research Use Only



Staining of normal human peripheral blood cells with Mouse IgG1  $\kappa$  Isotype Control eFluor® 450 (cat. 48-4714) (blue histogram) or Anti-Human CD45 eFluor® 450 (purple histogram). Cells in the lymphocyte gate were used for analysis.

### Product Information

Contents: Anti-Human CD45 eFluor® 450 (Pacific Blue® replacement)


**REF** Catalog Number: 48-9459

Clone: 2D1


Concentration: 5  $\mu$ l (0.25  $\mu$ g)/test

Host/Isotype: Mouse IgG1,  $\kappa$

Formulation: aqueous buffer, 0.09% sodium azide, may contain carrier protein/stabilizer

 Temperature Limitation: Store at 2-8°C. Do not freeze. Light sensitive material.

**LOT** Batch Code: Refer to Vial

 Use By: Refer to Vial

 Caution, contains Azide

### Description

The 2D1 monoclonal antibody reacts with all isoforms of human CD45, also known as Leukocyte Common Antigen (LCA). CD45 is expressed by all hematopoietic cells excluding circulating erythrocytes and platelets. The cytoplasmic portion of CD45 has tyrosine phosphatase enzymatic activity and plays an important role in activation of lymphocytes.

### Applications Reported

This 2D1 (HLe-1) antibody has been reported for use in flow cytometric analysis.

eFluor® 450 is a replacement for Pacific Blue®. eFluor® 450 emits at 456 nm and is excited with the Violet laser. Please make sure that your instrument is capable of detecting this fluorochrome.

### Applications Tested

This 2D1 (HLe-1) antibody has been pre-titrated and tested by flow cytometric analysis of normal human peripheral blood cells. This can be used at 5  $\mu$ l (0.25  $\mu$ g)/per test. A test is defined as the amount ( $\mu$ g)/test of antibody that will stain a cell sample in a final volume of 100  $\mu$ L. Cell number should be determined empirically but can range from  $10^5$  to  $10^8$  cells/test.

eFluor™ 450 is a replacement for Pacific Blue®. eFluor™ 450 emits at 456 nm and is excited with the Violet laser (405 nm). Please make sure that your instrument is capable of detecting this fluorochrome.

### References

Bradstock K.F., Janossy G., Pizzolo G., Hoffbrand A.V., McMichael A., Pilch J.R., Milstein C., Beverley P., Bolland F.J. Subpopulations of normal and leukemic human thymocytes: an analysis with the use of monoclonal antibodies. *J Natl Cancer Inst.* 1980 Jul; 65(1):33-42.

Tchilian E.Z., Wallace D.L., Wells R.S., Flower D.R., Morgan G., Beverley P.C. A deletion in the gene encoding the CD45 antigen in a patient with SCID. *J Immunol.* 2001 Jan 15;166(2):1308-13.

### Related Products

11-0199 Anti-Human CD19 FITC (HIB19)

12-0149 Anti-Human CD14 PE (61D3)

48-0451 Anti-Mouse CD45 eFluor® 450 (Pacific Blue® replacement) (30-F11)

48-4714 Mouse IgG1 K Isotype Control eFluor® 450 (Pacific Blue® replacement)

93-0037 Anti-Human CD3 eFluor® 605NC (OKT3)

---

Not for further distribution without written consent.

Copyright © 2000-2010 eBioscience, Inc.

Tel: 888.999.1371 or 858.642.2058 • Fax: 858.642.2046 • [www.eBioscience.com](http://www.eBioscience.com) • [info@eBioscience.com](mailto:info@eBioscience.com)