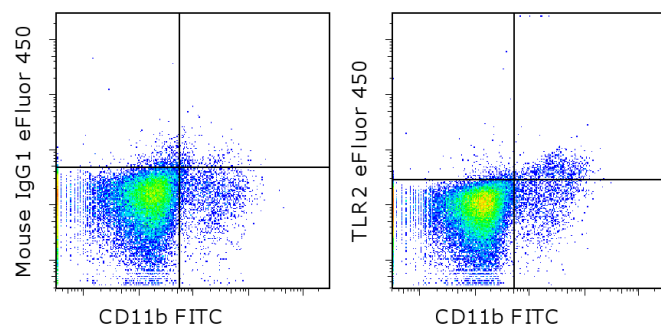


Anti-Human/Mouse CD282 (TLR2) eFluor® 450

Catalog Number: 48-9024

Also known as: TLR-2, toll-like receptor 2

RUO: For Research Use Only. Not for use in diagnostic procedures.



Staining of C57BL/6 splenocytes with Anti-Mouse CD11b FITC (cat. 11-0112) and 0.06 ug of Mouse IgG1 kappa Isotype Control eFluor® 450 cat. 48-4714 (left) or 0.06 ug of Anti-Human/Mouse CD282 (TLR2) eFluor® 450 (right). Total viable cells were used for analysis.

Product Information

Contents: Anti-Human/Mouse CD282 (TLR2) eFluor® 450



Catalog Number: 48-9024

Clone: T2.5

Concentration: 0.2 mg/mL

Host/Isotype: Mouse IgG1



Formulation: aqueous buffer, 0.09% sodium azide, may contain carrier protein/stabilizer

Temperature Limitation: Store at 2-8°C. Do not freeze. Light sensitive material.



Batch Code: Refer to vial



Use By: Refer to vial

Description

The T2.5 monoclonal antibody reacts with mouse and human Toll-like receptor 2 (TLR2). Mouse TLR2 is expressed by the myeloid lineage, including macrophage and dendritic cells in splenocytes and the RAW264.7 cell line. To date, at least twelve members of the Toll family have been identified in human and mouse. This family of type I transmembrane proteins is characterized by an extracellular domain with leucine-rich repeats and a cytoplasmic domain with homology to the type I IL-1 receptor. Two of these receptors, TLR2 and TLR4, are pattern recognition receptors and signaling molecules in response to bacterial lipoproteins and have been implicated in innate immunity and inflammation. TLR2 is expressed on the surface of cells and is responsible for distinguishing different pathogens. T2.5 is an antagonistic antibody.

Applications Reported

This T2.5 antibody has been reported for use in flow cytometric analysis.

Applications Tested

This T2.5 antibody has been tested by flow cytometric analysis of mouse splenocytes. This can be used at less than or equal to 0.125 µg per test. A test is defined as the amount (ug) of antibody that will stain a cell sample in a final volume of 100 µL. Cell number should be determined empirically but can range from 10⁵ to 10⁸ cells/test. It is recommended that the antibody be carefully titrated for optimal performance in the assay of interest.

eFluor® 450 is a replacement for Pacific Blue®. eFluor® 450 emits at 456 nm and is excited with the Violet laser (405 nm). Please make sure that your instrument is capable of detecting this fluorochrome.

References

Meng G, Rutz M, Schiemann M, Metzger J, Grabiec A, Schwandner R, Lippa PB, Ebel F, Busch DH, Bauer S, Wagner H, Kirschning CJ. 2004. Antagonistic antibody prevents toll-like receptor 2-driven lethal shock-like syndromes. J Clin Invest. 2004. 113:1473-81.

Sutmoller RP, den Brok MH, Kramer M, Bennink EJ, Toonen LW, Kullberg BJ, Joosten LA, Akira S, Netea MG,

Not for further distribution without written consent.

Copyright © 2000-2012 eBioscience, Inc.

Tel: 888.999.1371 or 858.642.2058 • Fax: 858.642.2046 • www.ebioscience.com • info@ebioscience.com

Anti-Human/Mouse CD282 (TLR2) eFluor® 450

Catalog Number: 48-9024

Also known as: TLR-2, toll-like receptor 2

RUO: For Research Use Only. Not for use in diagnostic procedures.

Adema GJ. Toll-like receptor 2 controls expansion and function of regulatory T cells. *J Clin Invest.* 2006 Feb;116(2):485-94 (T2.5, FC, PubMed)

Zhang C, Wang SH, Lasbury ME, Tschang D, Liao CP, Durant PJ, Lee CH. Toll-like receptor 2 mediates alveolar macrophage response to *Pneumocystis murina*. *Infect Immun.* 2006 Mar;74(3):1857-64 (T2.5, FA, PubMed).

Leemans JC, Stokman G, et al. 2005. Renal-associated TLR2 mediates ischemia/reperfusion injury in the kidney. *J Clin Invest.* 2005 Oct;115(10):2894-903. (IHC frozen and IP, PubMed)

Related Products

11-0112 Anti-Mouse CD11b FITC (M1/70)

48-4714 Mouse IgG1 K Isotype Control eFluor® 450 (P3.6.2.8.1)