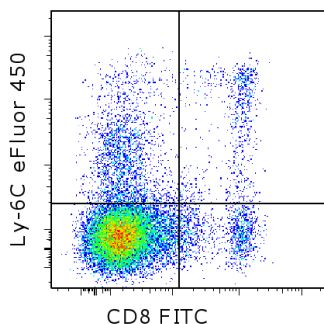


## Anti-Mouse Ly-6C eFluor<sup>®</sup> 450

**Catalog Number:** 48-5932

**RUO: For Research Use Only. Not for use in diagnostic procedures.**

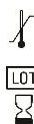


Staining of C57Bl/6 splenocytes with Anti-Mouse CD8a FITC (cat. 11-0081) and 0.125 ug of Anti-Mouse Ly-6C eFluor<sup>®</sup> 450. Total viable cells were used for analysis.

### Product Information

**Contents:** Anti-Mouse Ly-6C eFluor<sup>®</sup> 450  
**Catalog Number:** 48-5932  
**Clone:** HK1.4  
**Concentration:** 0.2 mg/mL  
**Host/Isotype:** Rat IgG2c, kappa

**Formulation:** aqueous buffer, 0.09% sodium azide, may contain carrier protein/stabilizer  
**Temperature Limitation:** Store at 2-8°C. Do not freeze. Light-sensitive material.  
**Batch Code:** Refer to vial  
**Use By:** Refer to vial



### Description

The monoclonal antibody HK1.4 recognizes mouse Ly-6C, a GPI-linked protein of the Ly6 family. Ly-6C is found on monocytes/macrophages, endothelial cells and granulocytes as well as a subset of lymphocytes. Some variation of expression is found on different mouse strains in regards to expression on CD4 and CD8 lymphocytes. These correlate to 2 alleles both of which are recognized by HK1.4: Ly6c.1 found on C57Bl/6 and SJL cells which results in staining of both CD4 and CD8 cells while Ly6-C.2 found on BALB/c and 3H/He results in staining of CD8, but not CD4 cells.

*In vitro* addition of HK1.4 antibody can increase proliferation and stimulate cytokine release.

### Applications Reported

This HK1.4 antibody has been reported for use in flow cytometric analysis.

### Applications Tested

This HK1.4 antibody has been tested by flow cytometric analysis of mouse splenocytes. This can be used at less than or equal to 0.25 µg per test. A test is defined as the amount (µg) of antibody that will stain a cell sample in a final volume of 100 µL. Cell number should be determined empirically but can range from 10<sup>5</sup> to 10<sup>8</sup> cells/test. It is recommended that the antibody be carefully titrated for optimal performance in the assay of interest.

**eFluor<sup>®</sup> 450 is a replacement for Pacific Blue<sup>®</sup>. eFluor<sup>®</sup> 450 emits at 456 nm and is excited with the Violet laser (405 nm). Please make sure that your instrument is capable of detecting this fluorochrome.**

### References

Pflugh DL, Maher SE, Bothwell AL. Ly-6 superfamily members Ly-6A/E, Ly-6C, and Ly-6I recognize two potential ligands expressed by B lymphocytes. J Immunol. 2002 Nov 1;169(9):5130-6. (**HK1.4**, FC PubMed)

Havran WL, Lancki DW, Moldwin RL, Dialynas DP, Fitch FW. Characterization of an anti-Ly-6 monoclonal antibody which defines and activates cytolytic T lymphocytes. J Immunol. 1988 Feb 15;140(4):1034-42. (**HK1.4**, FC, FA PubMed)

Not for further distribution without written consent.

Copyright © 2000-2012 eBioscience, Inc.

Tel: 888.999.1371 or 858.642.2058 • Fax: 858.642.2046 • [www.ebioscience.com](http://www.ebioscience.com) • [info@ebioscience.com](mailto:info@ebioscience.com)

---

## **Anti-Mouse Ly-6C eFluor® 450**

**Catalog Number:** 48-5932

**RUO: For Research Use Only. Not for use in diagnostic procedures.**

---

### **Related Products**

11-0081 Anti-Mouse CD8a FITC (53-6.7)

17-0041 Anti-Mouse CD4 APC (GK1.5)