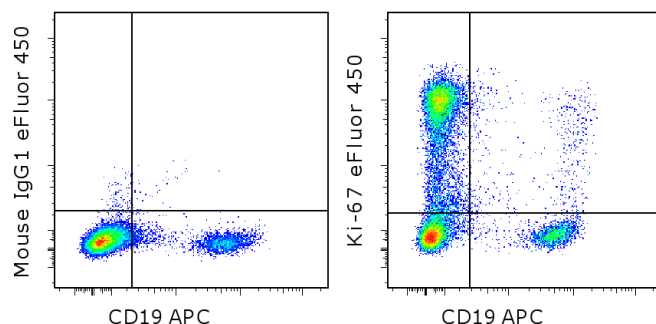


Anti-Human Ki-67 eFluor® 450

Catalog Number: 48-5699

RUO: For Research Use Only. Not for use in diagnostic procedures.



Intracellular staining of normal human peripheral blood cells stimulated for 2 days with immobilized Anti-Human CD3 (cat. 16-0037) with Anti-Human CD19 APC (cat. 17-0199) and Mouse IgG1 K Isotype Control eFluor® 450 (cat. 48-4714) (left) or Anti-Human Ki-67 eFluor® 450 (right). Cells in the lymphocyte gate were used for analysis.

Product Information

Contents: Anti-Human Ki-67 eFluor® 450
Catalog Number: 48-5699
Clone: 20Raj1
Concentration: 5 µL (0.06 µg)/test
Host/Isotype: Mouse IgG1, kappa



Formulation: aqueous buffer, 0.09% sodium azide, may contain carrier protein/stabilizer
Temperature Limitation: Store at 2-8°C. Do not freeze. Light-sensitive material.
Batch Code: Refer to vial
Use By: Refer to vial

Description

The monoclonal antibody 20Raj1 recognizes the human Ki-67 protein. Two isoforms of Ki-67 exist, a 345 and 395 kDa form that are expressed in dividing cells. Ki-67 is expressed in all cell types and is detectable during active phases of the cell cycle (G1, S, G2, and mitosis) but is absent from resting cells (G0). During interphase, Ki-67 expression is localized to the nucleus but redistributes to the chromosomes during mitosis and has specifically been found to associate with heterochromatin-bound proteins such as chromobox protein homolog 3 (CBX3). In studies of tumor cells, Ki-67 expression has been used as a marker for determining the fraction of proliferating cells within a given population of tumor cells.

This monoclonal antibody 20Raj1 recognizes canine Ki-67.

Applications Reported

This 20Raj1 antibody has been reported for use in intracellular staining using the Foxp3 Staining Buffers followed by flow cytometric analysis.

Applications Tested

This 20Raj1 antibody has been pre-titrated and tested by intracellular staining and flow cytometric analysis of stimulated normal human peripheral blood cells using the Foxp3 Staining Buffers (cat. 00-5521). This can be used at 5 µL (0.06 µg) per test. A test is defined as the amount (µg) of antibody that will stain a cell sample in a final volume of 100 µL. Cell number should be determined empirically but can range from 10⁵ to 10⁸ cells/test.

eFluor® 450 is a replacement for Pacific Blue®. eFluor® 450 emits at 456 nm and is excited with the Violet laser (405 nm). Please make sure that your instrument is capable of detecting this fluorochrome.

References

Jiao Y, Hua W, Zhang T, Zhang Y, Ji Y, Zhang H, Wu H. Characteristics of CD8+ T cell subsets in Chinese patients with chronic HIV infection during initial ART. AIDS Res Ther. 2011 Mar 25;8:15. (20Raj1, FC, PubMed)

Schlüter C, Duchrow M, Wohlenberg C, Becker MH, Key G, Flad HD, Gerdes J. The cell proliferation-associated

Not for further distribution without written consent.

Copyright © 2000-2012 eBioscience, Inc.

Tel: 888.999.1371 or 858.642.2058 • Fax: 858.642.2046 • www.ebioscience.com • info@ebioscience.com

Anti-Human Ki-67 eFluor® 450

Catalog Number: 48-5699

RUO: For Research Use Only. Not for use in diagnostic procedures.

antigen of antibody Ki-67: a very large, ubiquitous nuclear protein with numerous repeated elements, representing a new kind of cell cycle-maintaining proteins. J Cell Biol. 1993 Nov;123(3):513-22

Gerdes J, Lemke H, Baisch H, Wacker HH, Schwab U, Stein H. Cell cycle analysis of a cell proliferation-associated human nuclear antigen defined by the monoclonal antibody Ki-67. J Immunol. 1984 Oct;133(4):1710-5.

Related Products

00-5521 Foxp3 Fixation/Permeabilization Concentrate and Diluent

17-0199 Anti-Human CD19 APC (HIB19)