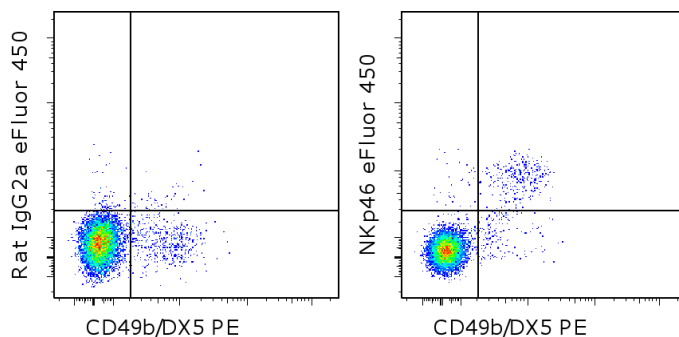


Anti-Mouse CD335 (NKp46) eFluor® 450

Catalog Number: 48-3351

Also known as: NCR1, Ly-94

RUO: For Research Use Only. Not for use in diagnostic procedures.



Staining of BALB/c splenocytes with Anti-Mouse CD49b (Integrin alpha 2) PE (cat. 12-5971) and 0.25 ug of Rat IgG2a K Isotype Control eFluor® 450 (cat. 48-4321) (left) or 0.25 ug of Anti-Mouse CD335 (NKp46) eFluor® 450 (right). Total viable cells were used for analysis.

Product Information

Contents: Anti-Mouse CD335 (NKp46) eFluor® 450



Catalog Number: 48-3351

Clone: 29A1.4

Concentration: 0.2 mg/mL

Host/Isotype: Rat IgG2a, kappa



Formulation: aqueous buffer, 0.09% sodium azide, may contain carrier protein/stabilizer

Temperature Limitation: Store at 2-8°C. Do not freeze. Light sensitive material.



Batch Code: Refer to vial



Use By: Refer to vial

Description

The monoclonal antibody 29A1.4 recognizes mouse NKp46, also known as CD335. CD335, a member of the natural cytotoxicity receptor (NCR) family, is a glycoprotein with 2 Ig-like domains and a short cytoplasmic tail. Expression of CD335 is uniquely found on NK cells (including immature NK cells, defined as DX5- CD3-, and thereby allowing discrimination between NKT cells and NK cells (NKp46+, CD3-). Furthermore, unlike many of the NK markers which also stain NKT cells, staining with 29A1.4 is not strain specific. Staining has been shown on C57Bl/6, SJL, CBA/CA and BALB/C strains. NKp46 has been shown to play a role in NK cell-mediated lysis of several tumor cells and pathogen-infected cell lines.

The 29A1.4 monoclonal antibody has been shown to activate NK cells *in vitro*. The 29A1.4 monoclonal antibody does not deplete NK cells *in vivo*.

Applications Reported

This 29A1.4 antibody has been reported for use in flow cytometric analysis.

Applications Tested

This 29A1.4 antibody has been tested by flow cytometric analysis of mouse splenocytes. This can be used at less than or equal to 0.5 µg per test. A test is defined as the amount (µg) of antibody that will stain a cell sample in a final volume of 100 µL. Cell number should be determined empirically but can range from 10⁵ to 10⁸ cells/test. It is recommended that the antibody be carefully titrated for optimal performance in the assay of interest.

eFluor® 450 is a replacement for Pacific Blue®. eFluor® 450 emits at 456 nm and is excited with the Violet laser (405 nm). Please make sure that your instrument is capable of detecting this fluorochrome.

References

Ota N, Wong K, Valdez PA, Zheng Y, Crellin NK, Diehl L, Ouyang W. IL-22 bridges the lymphotoxin pathway with the maintenance of colonic lymphoid structures during infection with *Citrobacter rodentium*. *Nat Immunol*. 2011 Aug 28 doi: 10.1038/ni.2089. (29A1.4, FC, PubMed)

Not for further distribution without written consent.

Copyright © 2000-2012 eBioscience, Inc.

Tel: 888.999.1371 or 858.642.2058 • Fax: 858.642.2046 • www.ebioscience.com • info@ebioscience.com

Anti-Mouse CD335 (NKp46) eFluor® 450

Catalog Number: 48-3351

Also known as: NCR1, Ly-94

RUO: For Research Use Only. Not for use in diagnostic procedures.

Walzer T, Chiossone L, Chaix J, Calver A, Carozzo C, Garrigue-Antar L, Jacques Y, Baratin M, Tomasello E, Vivier E. Natural killer cell trafficking in vivo requires a dedicated sphingosine 1-phosphate receptor. *Nat Immunol.* 2007 Dec;8(12):1337-44. (29A1.4, FC PubMed)

Walzer T, Bléry M, Chaix J, Fuseri N, Chasson L, Robbins SH, Jaeger S, André P, Gauthier L, Daniel L, Chemin K, Morel Y, Dalod M, Imbert J, Pierres M, Moretta A, Romagné F, Vivier E. Identification, activation, and selective in vivo ablation of mouse NK cells via NKp46. *Proc Natl Acad Sci U S A.* 2007 Feb 27;104(9):3384-9. (29A1.4, FC, FA PubMed)

Related Products

11-5941 Anti-Mouse NK1.1 FITC (PK136)

12-5971 Anti-Mouse CD49b (Integrin alpha 2) PE (DX5)

48-4321 Rat IgG2a K Isotype Control eFluor® 450 (eBR2a)