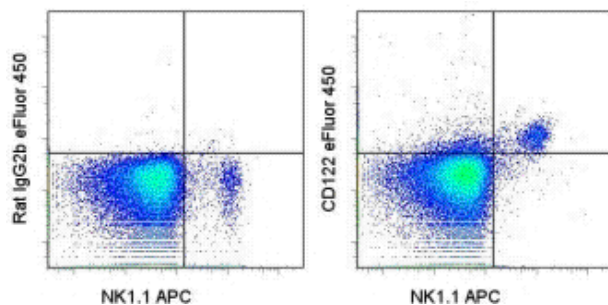


Anti-Mouse CD122 eFluor® 450

Catalog Number: 48-1222

Also Known As: Interleukin-2 Receptor beta, IL-2Rb

RUO: For Research Use Only. Not for use in diagnostic procedures.



Staining of C57Bl/6 splenocytes with Anti-Mouse NK1.1 APC (cat. 17-5941) and 0.125 ug of Rat IgG2b K Isotype Control eFluor® 450 (cat. 48-4031) (left) or 0.125 ug of Anti-Mouse CD122 eFluor® 450 (right). Total viable cells were used for analysis.

Product Information

Contents: Anti-Mouse CD122 eFluor® 450

REF **Catalog Number:** 48-1222

Clone: TM-b1 (TM-beta1)

Concentration: 0.2 mg/mL

Host/Isotype: Rat IgG2b

Formulation: aqueous buffer, 0.09% sodium azide, may contain carrier protein/stabilizer



Temperature Limitation: Store at 2-8°C. Do not freeze. Light sensitive material.



Batch Code: Refer to Vial



Use By: Refer to Vial

Description

The TM-b1 monoclonal antibody reacts with mouse CD122, the 90-110 kDa interleukin-2 receptor beta chain (IL-2R beta). CD122 is expressed by NK cells and some T cells in the periphery, and is upregulated by activation. CD122 associates with CD25 and CD132 (common gamma chain) to form the high affinity IL-2 receptor. High affinity binding of IL-2 to the IL-2 receptor is inhibited by the TM-b1 antibody.

Applications Reported

This TM-b1 (TM-beta1) antibody has been reported for use in flow cytometric analysis.

Applications Tested

This TM-b1 (TM-beta1) antibody has been tested by flow cytometric analysis of mouse splenocytes. This can be used at less than or equal to 0.25 µg per test. A test is defined as the amount (µg) of antibody that will stain a cell sample in a final volume of 100 µL. Cell number should be determined empirically but can range from 10⁵ to 10⁸ cells/test. It is recommended that the antibody be carefully titrated for optimal performance in the assay of interest.

eFluor® 450 is a replacement for Pacific Blue®. eFluor® 450 emits at 456 nm and is excited with the Violet laser (405 nm). Please make sure that your instrument is capable of detecting this fluorochrome.

References

French JD, Roark CL, Born WK, O'brien RL. Gamma delta T cell homeostasis is established in competition with alpha beta T cells and NK cells. Proc Natl Acad Sci U S A. 2005 Oct 11;102(41):14741-6. (**TM-b1**, FA blocking, PubMed)

Takeuchi Y, Tanaka T, Hamamura K, Sugimoto T, Miyasaka M, Yagita H, Okumura K. 1992. Expression and role of interleukin-2 receptor beta chain on CD4-CD8- T cell receptor alpha beta+ cells. Eur J Immunol. 22(11):2929-35.

Tanaka T, Takeuchi Y, Shiohara T, Kitamura F, Nagasaka Y, Hamamura K, Yagita H, Miyasaka M. 1992. In utero treatment with monoclonal antibody to IL-2 receptor beta-chain completely abrogates development of Thy-1+ dendritic epidermal cells. Int Immunol. 4(4):487-91.

Related Products

17-5941 Anti-Mouse NK1.1 APC (PK136)

48-4031 Rat IgG2b K Isotype Control eFluor® 450

Not for further distribution without written consent.

Copyright © 2000-2010 eBioscience, Inc.

Tel: 888.999.1371 or 858.642.2058 • Fax: 858.642.2046 • www.eBioscience.com • info@eBioscience.com