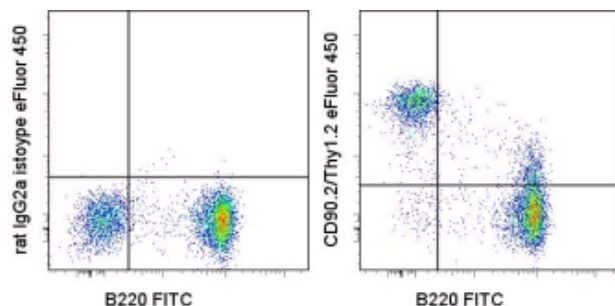


Anti-Mouse CD90.2 (Thy-1.2) eFluor® 450 (Pacific Blue® replacement)

Catalog Number: 48-0902

Also Known As: Thy1.2

RUO: For Research Use Only



Staining of C57BL/6 splenocytes with Anti-Human/Mouse CD45R (B220) APC (cat. 17-0452) and 0.015 µg of Rat IgG2a κ Isotype Control eFluor® 450 (cat. 48-4321) (left) or 0.0075 µg of Anti-Mouse CD90.2 (Thy-1.2) eFluor® 450 (right). Total viable cells were used for analysis.

Product Information

Contents: Anti-Mouse CD90.2 (Thy-1.2) eFluor® 450 (Pacific Blue® replacement)


REF Catalog Number: 48-0902

Clone: 53-2.1


Concentration: 0.2 mg/ml


Host/Isotype: Rat IgG2a, κ

Formulation: aqueous buffer, 0.09% sodium azide, may contain carrier protein/stabilizer

 Temperature Limitation: Store at 2-8°C. Do not freeze. Light sensitive material.

LOT Batch Code: Refer to Vial

 Use By: Refer to Vial

 Caution, contains Azide

Description

The 53-2.1 monoclonal antibody reacts with mouse CD90.2 also known as Thy-1.2, a GPI-linked membrane molecule. CD90.2 is expressed by mouse thymocytes and mature T cells as well as neurons in CD90.2-expressing mouse strains. These strains include BALB/c, CBA, C3H, C57BL/6, C58/, SJL and others. Cells from CD90.1-expressing strains including PL and AKR do not stain with 53-2.1. CD90 is involved in regulation of adhesion and signal transduction by T cells.

Applications Reported

This 53-2.1 antibody has been reported for use in flow cytometric analysis.

eFluor® 450 is a replacement for Pacific Blue®. eFluor® 450 emits at 456 nm and is excited with the Violet laser (405 nm). Please make sure that your instrument is capable of detecting this fluorochrome.

Applications Tested

This 53-2.1 antibody has been tested by flow cytometric analysis of mouse splenocytes. This can be used at less than or equal to 0.015 µg per test. A test is defined as the amount (µg) of antibody that will stain a cell sample in a final volume of 100 µL. Cell number should be determined empirically but can range from 10⁵ to 10⁸ cells/test. It is recommended that the antibody be carefully titrated for optimal performance in the assay of interest.

eFluor™ 450 is a replacement for Pacific Blue®. eFluor™ 450 emits at 456 nm and is excited with the Violet laser (405 nm). Please make sure that your instrument is capable of detecting this fluorochrome.

References

Ledbetter, J. A. and L. A. Herzenberg (1979). "Xenogeneic monoclonal antibodies to mouse lymphoid differentiation antigens." *Immunol Rev* 47: 63-90.

Related Products

48-4321 Rat IgG2a K Isotype Control eFluor® 450 (Pacific Blue® replacement)

Not for further distribution without written consent.

Copyright © 2000-2010 eBioscience, Inc.

Tel: 888.999.1371 or 858.642.2058 • Fax: 858.642.2046 • www.eBioscience.com • info@eBioscience.com