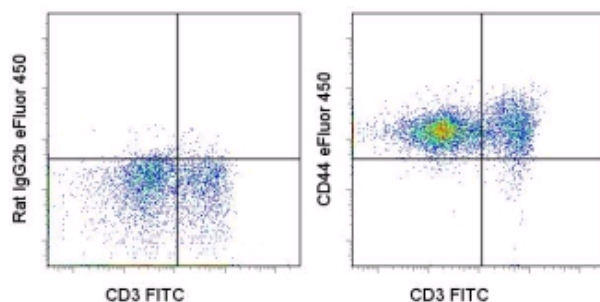


Anti-Human/Mouse CD44 eFluor® 450 (Pacific Blue® replacement)

Catalog Number: 48-0441

Also Known As: Pgp-1, MDU3, Hermes, Hyaluronate receptor

RUO: For Research Use Only



Staining of C57BL/6 splenocytes with Anti-Mouse CD3e FITC (cat. 11-0031) and 0.125 µg of Rat IgG2b κ Isotype Control eFluor® 450 (cat. 48-4031) (left) or 0.125 µg of Anti-Human/Mouse CD44 eFluor® 450 (right). Cells in the lymphocyte gate were used for analysis.

Product Information

Contents: Anti-Human/Mouse CD44 eFluor® 450 (Pacific Blue® replacement)


REF Catalog Number: 48-0441

Clone: IM7


Concentration: 0.2 mg/ml


Host/Isotype: Rat IgG2b, κ

Formulation: aqueous buffer, 0.09% sodium azide, may contain carrier protein/stabilizer

 Temperature Limitation: Store at 2-8°C. Do not freeze. Light sensitive material.

LOT Batch Code: Refer to Vial

 Use By: Refer to Vial

 Caution, contains Azide

Description

The IM7 monoclonal antibody reacts with all isoforms of mouse CD44 (Pgp-1). CD44 is expressed by hematopoietic and non-hematopoietic cells. Bone marrow myeloid cells and memory T cells highly express this antigen and peripheral B and T cells can upregulate the expression of CD44. CD44 functions as an adhesion molecule through its binding to hyaluronate, an extracellular matrix component.

Applications Reported

This IM7 antibody has been reported for use in flow cytometric analysis.

eFluor® 450 is a replacement for Pacific Blue®. eFluor® 450 emits at 456 nm and is excited with the Violet laser (405 nm). Please make sure that your instrument is capable of detecting this fluorochrome.

Applications Tested

This IM7 antibody has been tested by flow cytometric analysis of mouse splenocytes. This can be used at less than or equal to 0.25 µg per test. A test is defined as the amount (µg) of antibody that will stain a cell sample in a final volume of 100 µL. Cell number should be determined empirically but can range from 10⁵ to 10⁸ cells/test. It is recommended that the antibody be carefully titrated for optimal performance in the assay of interest.

eFluor™ 450 is a replacement for Pacific Blue®. eFluor™ 450 emits at 456 nm and is excited with the Violet laser (405 nm). Please make sure that your instrument is capable of detecting this fluorochrome.

References

- Trowbridge, I. S., J. Lesley, et al. 1982. Biochemical characterization and cellular distribution of a polymorphic, murine cell-surface glycoprotein expressed on lymphoid tissues. *Immunogenetics* 15(3): 299-312.
- Lesley, J. and I. S. Trowbridge 1982. Genetic characterization of a polymorphic murine cell-surface glycoprotein. *Immunogenetics* 15(3): 313-20.
- Maiti A, Maki G, Johnson P. TNF-alpha induction of CD44-mediated leukocyte adhesion by sulfation. *Science*. 1998. Oct 30;282(5390):941-3.

Related Products

48-4031 Rat IgG2b K Isotype Control eFluor® 450 (Pacific Blue® replacement)

Not for further distribution without written consent.

Copyright © 2000-2010 eBioscience, Inc.

Tel: 888.999.1371 or 858.642.2058 • Fax: 858.642.2046 • www.eBioscience.com • info@eBioscience.com