

# Product Data Sheet

## LEAF™ Purified anti-human CD56 (NCAM)

**Catalog # / Size:** 304622 / 500 µg

**Clone:** MEM-188

**Isotype:** Mouse IgG2a, κ

**Workshop Number:** VI NK26

**Immunogen:** KG-1 human acute myelogenous leukemia cell line

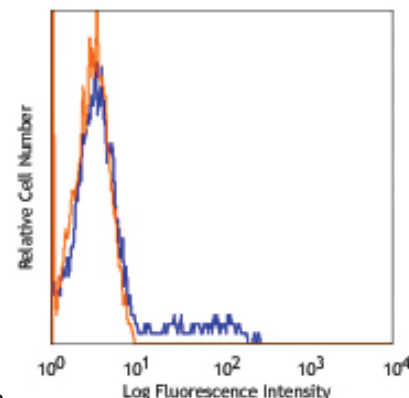
**Reactivity:** Human, **Cross-Reactivity\*:** Cattle (Bovine, Cow), Swine (Pig, Porcine)

**Preparation:** The LEAF™ (Low Endotoxin, Azide-Free) antibody was purified by affinity chromatography.

**Formulation:** 0.2 µm filtered in phosphate-buffered solution, pH 7.2, containing no preservative. Endotoxin level is <0.1 EU/µg of the protein (<0.01 ng/µg of the protein) as determined by the LAL test.

**Concentration:** 1.0 mg/ml

**Storage:** The antibody solution should be stored undiluted at 4°C. This LEAF™ solution contains no preservative; handle under aseptic conditions.



Human peripheral blood lymphocytes stained with LEAF™ purified MEM-188, followed by anti-mouse IgG FITC

## Applications:

**Applications:** FC - *Quality tested*  
 IHC, IP, WB - *Reported in the literature*

**Recommended Usage:** Each lot of this antibody is quality control tested by immunofluorescent staining with flow cytometric analysis. For immunofluorescent staining, the suggested use of this reagent is ≤2.0 µg per million cells in 100 µl volume or 100 µl of whole blood. It is recommended that the reagent be titrated for optimal performance for each application.

**Application Notes:** Additional reported applications (for the relevant formats) include: immunoprecipitation, immunohistochemical staining of formalin-fixed paraffin-embedded tissue sections, and Western blotting (non-reducing).

**Application References:** 1. Kishimoto T, *et al.* Eds. 1997. Leucocyte Typing VI. Garland Publishing Inc. London.

**Description:** CD56 is a single transmembrane glycoprotein also known as N-CAM (Neural Cell Adhesion Molecule), Leu-19, or NKH1. It is a member of the Ig superfamily. The 140 kD isoform is expressed on NK cells and NK-T cells. CD56 is also expressed in brain (cerebellum and cortex) and at neuromuscular junctions. Certain large granular lymphocyte (LGL) leukemias, small-cell lung carcinomas, neuronal derived tumors, myelomas, and myeloid leukemias also express CD56. CD56 plays a role in homophilic and heterophilic adhesion via binding to itself or heparin sulfate.

**Antigen References:** 1. Lanier L, *et al.* 1991. *J. Immunol.* 146:4421.  
 2. Hemperly J, *et al.* 1990. *J. Mol. Neurosci.* 2:71.  
 3. Cremer H, *et al.* 1994. *Nature* 367:455.

**Related Products:** **Product**  
 LEAF™ Purified Mouse IgG2a, κ Isotype Ctrl

**Clone**  
 MOPC-173

**Application**  
 FC, WB, IP, ICFC, ICC, IF,  
 IHC, FA  
 FC, ICC, ICFC  
 FC, ICFC

Cell Staining Buffer  
 RBC Lysis Buffer (10X)



For research use only. Not for diagnostic use. Not for resale. BioLegend will not be held responsible for patent infringement or other violations that may occur with the use of our products.



\*These products may be covered by one or more Limited Use Label Licenses (see the BioLegend Catalog or our website, [www.biollegend.com/ordering#license](http://www.biollegend.com/ordering#license)). BioLegend products may not be transferred to third parties, resold, modified for resale, or used to manufacture commercial products, reverse engineer functionally similar materials, or to provide a service to third parties without written approval of BioLegend. By use of these products you accept the terms and conditions of all applicable Limited Use Label Licenses. Unless otherwise indicated, these products are for research use only and are not intended for human or animal diagnostic, therapeutic or commercial use.

BioLegend Inc., 9727 Pacific Heights Blvd, San Diego, CA 92121 [www.biollegend.com](http://www.biollegend.com)  
 Toll-Free Phone: 1-877-Bio-Legend (246-5343) Phone: (858) 768-5800 Fax: (877) 455-9587