

# Product Data Sheet

## Purified anti-human CD56 (NCAM)

**Catalog # / Size:** 304601 / 25 µg  
304602 / 100 µg

**Clone:** MEM-188

**Isotype:** Mouse IgG2a, κ

**Workshop Number:** VI NK26

**Immunogen:** KG-1 human acute myelogenous leukemia cell line

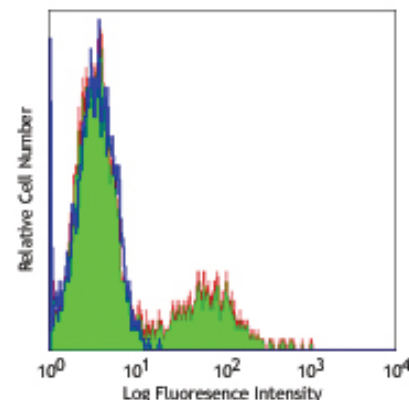
**Reactivity:** Human, **Cross-Reactivity:** Cattle (Bovine, Cow), Swine (Pig, Porcine)

**Preparation:** The antibody was purified by affinity chromatography.

**Formulation:** Phosphate-buffered solution, pH 7.2, containing 0.09% sodium azide.

**Concentration:** 0.5 mg/ml

**Storage:** The antibody solution should be stored undiluted at 4°C.



Human peripheral blood lymphocytes stained with purified MEM-188, followed by anti-mouse IgGs FITC

## Applications:

**Applications:** FC - *Quality tested*  
IP, WB, IHC - *Reported in the literature*

**Recommended Usage:** Each lot of this antibody is quality control tested by immunofluorescent staining with flow cytometric analysis. For immunofluorescent staining, the suggested use of this reagent is ≤2.0 µg per million cells in 100 µl volume. It is recommended that the reagent be titrated for optimal performance for each application.

**Application Notes:** Additional reported applications (for the relevant formats) include: immunoprecipitation, immunohistochemical staining of formalin-fixed paraffin-embedded tissue sections, and Western blotting (non-reducing).

**Application References:** 1. Kishimoto T, *et al.* Eds. 1997. Leucocyte Typing VI. Garland Publishing Inc. London.

**Description:** CD56 is a single transmembrane glycoprotein also known as N-CAM (Neural Cell Adhesion Molecule), Leu-19, or NKH1. It is a member of the Ig superfamily. The 140 kD isoform is expressed on NK cells and NK-T cells. CD56 is also expressed in the brain (cerebellum and cortex) and at neuromuscular junctions. Certain large granular lymphocyte (LGL) leukemias, small-cell lung carcinomas, neuronal derived tumors, myelomas, and myeloid leukemias also express CD56. CD56 plays a role in homophilic and heterophilic adhesion via binding to itself or heparin sulfate.

**Antigen References:** 1. Lanier L, *et al.* 1991. *J. Immunol.* 146:4421.  
2. Hemperly J, *et al.* 1990. *J. Mol. Neurosci.* 2:71.  
3. Cremer H, *et al.* 1994. *Nature* 367:455.

### Related Products:

**Product**  
Purified anti-human CD16  
Purified anti-human CD94  
APC Goat anti-mouse IgG (minimal x-reactivity)  
FITC Goat anti-mouse IgG (minimal x-reactivity)  
Purified Mouse IgG2a, κ Isotype Ctrl  
PE Goat anti-mouse IgG (minimal x-reactivity)  
Cell Staining Buffer  
RBC Lysis Buffer (10X)

### Clone

3G8  
DX22  
Poly4053  
Poly4053  
MOPC-173  
Poly4053

### Application

FC, IHC, IP, CyTOF®  
FC, IHC, IP  
FC  
FC  
FC, ICC, IF, IHC, IP, WB  
FC  
FC, ICC, ICFC  
FC, ICFC



For research use only. Not for diagnostic use. Not for resale. BioLegend will not be held responsible for patent infringement or other violations that may occur with the use of our products.



\*These products may be covered by one or more Limited Use Label Licenses (see the BioLegend Catalog or our website, [www.biollegend.com/ordering#license](http://www.biollegend.com/ordering#license)). BioLegend products may not be transferred to third parties, resold, modified for resale, or used to manufacture commercial products, reverse engineer functionally similar materials, or to provide a service to third parties without written approval of BioLegend. By use of these products you accept the terms and conditions of all applicable Limited Use Label Licenses. Unless otherwise indicated, these products are for research use only and are not intended for human or animal diagnostic, therapeutic or commercial use.