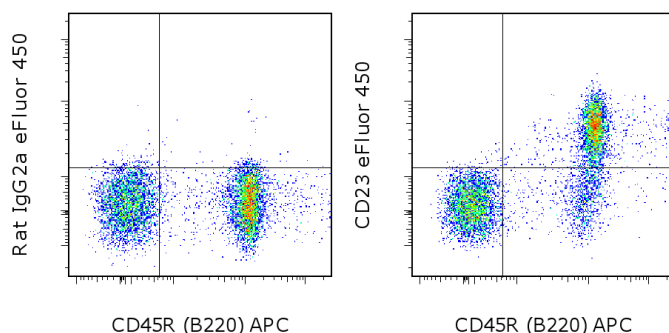


## Anti-Mouse CD23 eFluor® 450

**Catalog Number:** 48-0232

**Also known as:** Low Affinity IgE Receptor, FcεRII

**RUO: For Research Use Only. Not for use in diagnostic procedures.**



Staining of BALB/c splenocytes with Anti-Human/Mouse CD45R (B220) APC (cat. 17-0452) and 0.25 µg of Rat IgG2a K Isotype Control eFluor® 450 (cat. 48-4321) (left) or 0.25 µg of Anti-Mouse CD23 eFluor® 450 (right). Total viable cells were used for analysis.

### Product Information



**Contents:** Anti-Mouse CD23 eFluor® 450

**Catalog Number:** 48-0232

**Clone:** B3B4

**Concentration:** 0.2 mg/mL

**Host/Isotype:** Rat IgG2a, kappa



**Formulation:** aqueous buffer, 0.09% sodium azide, may contain carrier protein/stabilizer

**Temperature Limitation:** Store at 2-8°C. Do not freeze. Light-sensitive material.

**Batch Code:** Refer to vial

**Use By:** Refer to vial

**Contains sodium azide**



### Description

The B3B4 monoclonal antibody reacts with mouse CD23, a 45 kDa type II transmembrane glycoprotein. CD23 is expressed on resting conventional B cells, and its expression is modulated upon B-cell activation. B-1 cell lineage (CD5+ B cells) does not express CD23. Soluble forms of the antigen have been reported to be biologically active. CD23 is a low affinity receptor for IgE and is thought to play a role in the regulation of IgE response and B-cell activation. CD21 is thought to bind to CD23.

### Applications Reported

This B3B4 antibody has been reported for use in flow cytometric analysis.

### Applications Tested

This B3B4 antibody has been tested by flow cytometric analysis of mouse splenocytes. This can be used at less than or equal to 0.5 µg per test. A test is defined as the amount (µg) of antibody that will stain a cell sample in a final volume of 100 µL. Cell number should be determined empirically but can range from 10<sup>5</sup> to 10<sup>8</sup> cells/test. It is recommended that the antibody be carefully titrated for optimal performance in the assay of interest.

**eFluor® 450 is a replacement for Pacific Blue®. eFluor® 450 emits at 456 nm and is excited with the Violet laser (405 nm). Please make sure that your instrument is capable of detecting this fluorochrome.**

### References

Rabin E, Cong YZ, Wortis HH. Loss of CD23 is a consequence of B-cell activation. Implications for the analysis of B-cell lineages. *Ann N Y Acad Sci.* 1992 May 4;651:130-42.

Waldschmidt TJ, Kroese FG, Tygrett LT, Conrad DH, Lynch RG. The expression of B cell surface receptors. III. The murine low-affinity IgE Fc receptor is not expressed on Ly 1 or 'Ly 1-like' B cells. *Int Immunol.* 1991 Apr;3(4):305-15.

Waldschmidt TJ, Conrad DH, Lynch RG. The expression of B cell surface receptors. I. The ontogeny and distribution of the murine B cell IgE Fc receptor. *J Immunol.* 1988 Apr 1;140(7):2148-54.

Not for further distribution without written consent.

Copyright © 2000-2012 eBioscience, Inc.

Tel: 888.999.1371 or 858.642.2058 • Fax: 858.642.2046 • [www.ebioscience.com](http://www.ebioscience.com) • [info@ebioscience.com](mailto:info@ebioscience.com)

---

## **Anti-Mouse CD23 eFluor® 450**

**Catalog Number:** 48-0232

**Also known as:** Low Affinity IgE Receptor, FcεRII

**RUO: For Research Use Only. Not for use in diagnostic procedures.**

---

Rao M, Lee WT, Conrad DH. Characterization of a monoclonal antibody directed against the murine B lymphocyte receptor for IgE. J Immunol. 1987 Mar 15;138(6):1845-51.

Lee WT, Rao M, Conrad DH. The murine lymphocyte receptor for IgE. IV. The mechanism of ligand-specific receptor upregulation on B cells. J Immunol. 1987 Aug 15;139(4):1191-8

### **Related Products**

00-4300 10X RBC Lysis Buffer (Multi-species)

11-5993 Anti-Mouse IgD FITC (11-26c (11-26))

17-0452 Anti-Human/Mouse CD45R (B220) APC (RA3-6B2)

48-4321 Rat IgG2a K Isotype Control eFluor® 450 (eBR2a)