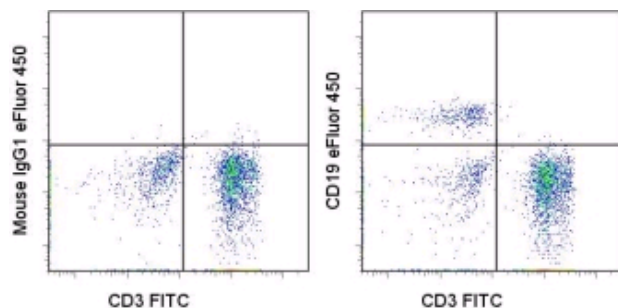


Anti-Human CD19 eFluor® 450 (Pacific Blue® replacement)

Catalog Number: 48-0199

Also Known As: Leu-12

RUO: For Research Use Only



Staining of normal human peripheral blood cells with Anti-Human CD3 FITC (cat. 11-0038) and Mouse IgG1 κ Isotype Control eFluor® 450 (cat. 48-4714) (left) or Anti-Human CD19 eFluor® 450 (right). Cells in the lymphocyte gate were used for analysis.

Product Information

Contents: Anti-Human CD19 eFluor® 450 (Pacific Blue® replacement)

REF Catalog Number: 48-0199


Clone: HIB19

Concentration: 5 μ L (0.5 μ g)/test


Host/Isotype: Mouse IgG1, κ

HLDA Workshop: V CD19.11

Formulation: aqueous buffer, 0.09% sodium azide, may contain carrier protein/stabilizer

 Temperature Limitation: Store at 2-8°C. Do not freeze. Light sensitive material.

LOT Batch Code: Refer to Vial

 Use By: Refer to Vial

Description

The HIB19 monoclonal antibody reacts with human CD19, a 95 kDa transmembrane glycoprotein. CD19 is expressed by B cells during all stages of development excluding the terminally differentiated plasma cells. Follicular dendritic cells also express CD19. Together CD21, CD81, Leu13, MHC class II, and CD19 form a multimolecular complex that associates with BCR. Signaling through CD19 induces tyrosine phosphorylation, calcium flux and proliferation of B cells.

Applications Reported

This HIB19 antibody has been reported for use in flow cytometric analysis.

eFluor® 450 is a replacement for Pacific Blue®. eFluor® 450 emits at 456 nm and is excited with the Violet laser (405 nm). Please make sure that your instrument is capable of detecting this fluorochrome.

Applications Tested

This HIB19 antibody has been pre-titrated and tested by flow cytometric analysis of human mononuclear cells. This can be used at 5 μ L (0.5 μ g) per test. A test is defined as the amount (μ g) of antibody that will stain a cell sample in a final volume of 100 μ L. Cell number should be determined empirically but can range from 10^5 to 10^8 cells/test.

eFluor® 450 is a replacement for Pacific Blue®. eFluor® 450 emits at 456 nm and is excited with the Violet laser (405 nm). Please make sure that your instrument is capable of detecting this fluorochrome.

References

Knapp, W., B. Dorken, et al. eds. (1989). Leucocyte Typing IV: White Cell Differentiation Antigens. Oxford University Press. New York.

Schlossman, S., L. Bloumsell, et al. eds (1995). Leucocyte Typing V: White Cell Differentiation Antigens. Oxford University Press. New York.

Related Products

48-4714 Mouse IgG1 K Isotype Control eFluor® 450 (Pacific Blue® replacement)

