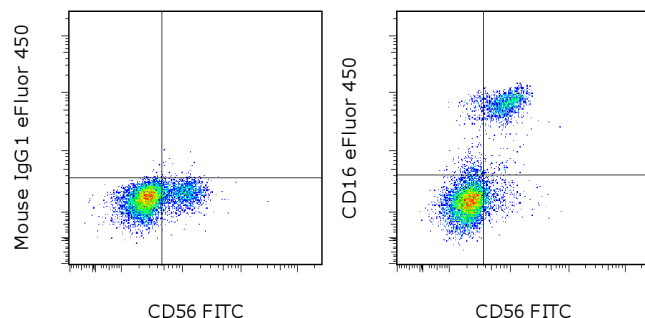


Anti-Human CD16 eFluor® 450

Catalog Number: 48-0168

Also known as: Low Affinity IgG Receptor 3, FCGR3a, FCGR3, IGFR11

RUO: For Research Use Only. Not for use in diagnostic procedures.



Staining of normal human peripheral blood cells with Anti-Human CD56 (NCAM) FITC (cat. 11-0569) and Mouse IgG1 K Isotype Control eFluor® 450 (cat. 48-4714) (left) or Anti-Human CD16 eFluor® 450 (right). Cells in the lymphocyte gate were used for analysis.

Product Information

Contents: Anti-Human CD16 eFluor® 450

Catalog Number: 48-0168

Clone: eBioCB16 (CB16)

Concentration: 5 µL (0.25 µg)/test

Host/Isotype: Mouse IgG1, kappa

Formulation: aqueous buffer, 0.09% sodium azide, may contain carrier protein/stabilizer

Temperature Limitation: Store at 2-8°C. Do not freeze. Light sensitive material.

Batch Code: Refer to vial

Use By: Refer to vial

Contains sodium azide

Description

The eBioCB16 monoclonal antibody recognizes CD16 (Fc gammaRIII), the low-affinity receptor for IgG with an apparent molecular weight of 50-80 kDa. CD16 is represented by two similar genes, CD16A (Fc gammaRIIIA), which exists as a hetero-oligomeric polypeptide-anchored form in macrophages and NK cells and CD16B (Fc gammaRIIIB), which exist as a monomeric GPI-anchored form in neutrophils. Furthermore, there are two known polymorphisms of CD16B, NA-1 and NA-2. Individuals homozygous for NA-2 show a lower phagocytic capacity compared with NA-1. CD16 binds IgG in the form of immune complexes and shows preferential binding of IgG1 and IgG3 isotypes and minimal binding of IgG2 and IgG4. Upon IgG binding, both CD16 isoforms initiate signal transduction cascades that lead to a variety of responses including antibody-dependent cell-mediated cytotoxicity (ADCC), phagocytosis, degranulation and proliferation.

Applications Reported

This eBioCB16 (CB16) antibody has been reported for use in flow cytometric analysis.

eFluor® 450 is a replacement for Pacific Blue®. eFluor® 450 emits at 456 nm and is excited with the Violet laser (405 nm). Please make sure that your instrument is capable of detecting this fluorochrome.

Applications Tested

This eBioCB16 (CB16) antibody has been pre-titrated and tested by flow cytometric analysis of normal human peripheral blood cells. This can be used at 5 µL (0.25 µg) per test. A test is defined as the amount (µg) of antibody that will stain a cell sample in a final volume of 100 µL. Cell number should be determined empirically but can range from 10⁵ to 10⁸ cells/test.

eFluor® 450 is a replacement for Pacific Blue®. eFluor® 450 emits at 456 nm and is excited with the Violet laser (405 nm). Please make sure that your instrument is capable of detecting this fluorochrome.

References

Deaglio S, Zubiaur M, Gregorini A, Bottarel F, Ausiello CM, Dianzani U, Sancho J, Malavasi F. Human CD38 and

Not for further distribution without written consent.

Copyright © 2000-2012 eBioscience, Inc.

Tel: 888.999.1371 or 858.642.2058 • Fax: 858.642.2046 • www.ebioscience.com • info@ebioscience.com

Anti-Human CD16 eFluor® 450

Catalog Number: 48-0168

Also known as: Low Affinity IgG Receptor 3, FCGR3a, FCGR3, IGFR11

RUO: For Research Use Only. Not for use in diagnostic procedures.

CD16 are functionally dependent and physically associated in natural killer cells. Blood. 2002 Apr 1;99(7):2490-8. (CB16, FC, PubMed)

Zilber MT, Gregory S, Mallone R, Deaglio S, Malavasi F, Charron D, Gelin C. CD38 expressed on human monocytes: a coaccessory molecule in the superantigen-induced proliferation. Proc Natl Acad Sci U S A. 2000 Mar 14;97(6):2840-5. (CB16, Cell Separation, PubMed)

Wirthmueller U, Kurosaki T, Murakami MS, Ravetch JV. Signal transduction by Fc gamma RIII (CD16) is mediated through the gamma chain. J Exp Med. 1992 May 1;175(5):1381-90.

Related Products

00-4222 Flow Cytometry Staining Buffer

11-0569 Anti-Human CD56 (NCAM) FITC (MEM188 (MEM-188))

12-0567 Anti-Human CD56 (NCAM) PE (CMSSB)

12-0649 Anti-Human CD64 (Fc gamma Receptor 1) PE (10.1)

48-4714 Mouse IgG1 K Isotype Control eFluor® 450 (P3.6.2.8.1)