

Product Data Sheet

Purified anti-human CD49c (integrin $\alpha 3$)

Catalog # / Size: 343801 / 25 μ g
 343802 / 100 μ g

Clone: ASC-1

Isotype: Mouse IgG1, κ

Workshop Number: VI A002

Immunogen: Human squamous cell carcinoma cell line SCC-9

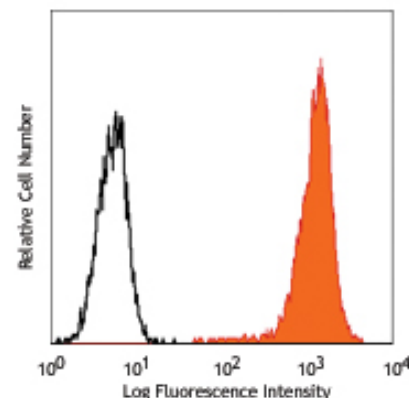
Reactivity: Human

Preparation: The antibody was purified by affinity chromatography.

Formulation: Phosphate-buffered solution, pH 7.2, containing 0.09% sodium azide.

Concentration: 0.5 mg/ml

Storage: The antibody solution should be stored undiluted at 4°C.



Human cervical cancer cell line HeLa cells stained with purified ASC-1 conjugated to PE

Applications:

Applications: FC - *Quality tested*
 IP, WB, IHC - *Reported in the literature*

Recommended Usage: Each lot of this antibody is quality control tested by immunofluorescent staining with flow cytometric analysis. For immunofluorescent staining, the suggested use of this reagent is $\leq 1.0 \mu$ g per 10^6 cells in 100 μ l volume. It is recommended that the reagent be titrated for optimal performance for each application.

Application Notes: Additional reported applications include: immunoprecipitation, Western blot, and immunohistochemical staining of frozen tissue sections.

Application References: 1. Pattaramalai S, *et al.* 1996. *Exp. Cell. Res.* 222:281.
 2. Skubitz AP, *et al.* 1996. *Am. J. Pathol.* 148:1445.
 3. Skubitz AP, *et al.* 1998. *FEBS Lett.* 426:386.

Description: CD49c is a 150 kD α integrin chain known as $\alpha 3$ integrin or VLA-3 α chain. It is a type I transmembrane glycoprotein which is proteolytically cleaved into two disulfide linked fragments of 125 kD and 30 kD. CD49c forms a heterodimer with integrin $\beta 1$ ($\alpha 3\beta 1$, CD49c/CD29, VLA-3) and is expressed by many types of adhesion cells, such as endothelial cells, epithelial cells, and dermal fibroblasts. Weak expression has been reported on leukocytes. VLA-3 plays a role in cell-cell and cell-matrix adhesion through binding Kalinin, collagen, laminin-1, laminin-5, entactin, and fibronectin.

Antigen References: 1. Zola H, *et al.* 2007. *Leukocyte and stromal Cell Molecules:the CD Markers.* John Wiley & Sons Inc.

Related Products:

Product
 Purified Mouse IgG1, κ Isotype Ctrl
 Cell Staining Buffer
 RBC Lysis Buffer (10X)

Clone
 MOPC-21

Application
 FC, ICFC, ICC, IF, IHC, IP, WB
 FC, ICC, ICFC
 FC, ICFC



For research use only. Not for diagnostic use. Not for resale. BioLegend will not be held responsible for patent infringement or other violations that may occur with the use of our products.



*These products may be covered by one or more Limited Use Label Licenses (see the BioLegend Catalog or our website, www.biollegend.com/ordering#license). BioLegend products may not be transferred to third parties, resold, modified for resale, or used to manufacture commercial products, reverse engineer functionally similar materials, or to provide a service to third parties without written approval of BioLegend. By use of these products you accept the terms and conditions of all applicable Limited Use Label Licenses. Unless otherwise indicated, these products are for research use only and are not intended for human or animal diagnostic, therapeutic or commercial use.