

Product Data Sheet

PE anti-human CD49a

Catalog # / Size: 328303 / 25 tests
328304 / 100 tests

Clone: TS2/7

Isotype: Mouse IgG1, κ

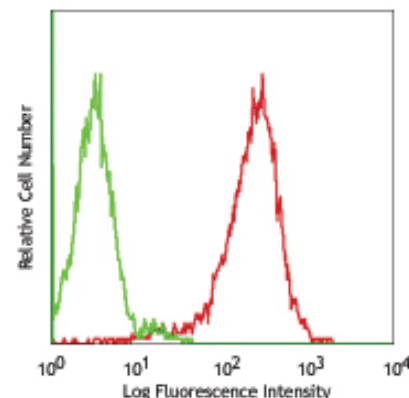
Immunogen: Human CTL line

Reactivity: Human

Preparation: The antibody was purified by affinity chromatography, and conjugated with PE under optimal conditions. The solution is free of unconjugated PE and unconjugated antibody.

Formulation: Phosphate-buffered solution, pH 7.2, containing 0.09% sodium azide and 0.2% (w/v) BSA (origin USA).

Storage: The antibody solution should be stored undiluted at 4°C and protected from prolonged exposure to light. **Do not freeze.**



Human cervical cancer cell line, HeLa, stained with TS2/7 PE

Applications:

Applications: FC - Quality tested

Recommended Usage: Each lot of this antibody is quality control tested by immunofluorescent staining with flow cytometric analysis. **Test size products are transitioning from 20 μ l to 5 μ l per test.** Please check your vial or your CoA to find the suggested use of this reagent per million cells in 100 μ l staining volume or per 100 μ l of whole blood. It is recommended that the reagent be titrated for optimal performance for each application. Read more at www.biolegend.com/testsize regarding the test size change.

Application Notes: Additional reported applications include: immunoprecipitation (1) and immunohistochemical staining (1) of acetone-fixed frozen tissue sections

Application References:

1. Hemler ME, *et al.* 1984. *J. Immunol.* 132:3011
2. Hemler ME, *et al.* 1985. *J. Biol. Chem.* 260:15246
3. Sandoval F, *et al.* 2013. *Sci Transl Med.* 13:172. PubMed.

Description: CD49a is a 200 kD type I transmembrane glycoprotein also known as α_1 integrin, VLA-1 α chain, or Integrin α_1 . It associates with CD29 (β_1 integrin) to form VLA-1 complex, a collagen IV and alminin-1 receptor and that is expressed on activated T cells, monocytes, NK cells, smooth muscle cells, neuronal cells, fibroblasts, and mesenchymal cells. CD49a is an adhesion molecule and is involved in the regulation of leukocyte migration, T cell proliferation, and cytokine production.

Antigen References:

1. Zola H, *et al.* Eds. 2007. *Leukocyte and Stromal Cell Molecules: The CD Markers*. Wiley-Liss Press. p122
2. Boiret N, *et al.* 2005. *Exp. Hematol.* 33:219

Related Products:

Product
PE Mouse IgG1, κ Isotype Ctrl
Cell Staining Buffer
RBC Lysis Buffer (10X)
Human TruStain FcX™ (Fc Receptor Blocking Solution)

Clone
MOPC-21

Application
FC, ICFC
FC, ICC, ICFC
FC, ICFC
FC, ICC, ICFC



For research use only. Not for diagnostic use. Not for resale. BioLegend will not be held responsible for patent infringement or other violations that may occur with the use of our products.



*These products may be covered by one or more Limited Use Label Licenses (see the BioLegend Catalog or our website, www.biolegend.com/ordering#license). BioLegend products may not be transferred to third parties, resold, modified for resale, or used to manufacture commercial products, reverse engineer functionally similar materials, or to provide a service to third parties without written approval of BioLegend. By use of these products you accept the terms and conditions of all applicable Limited Use Label Licenses. Unless otherwise indicated, these products are for research use only and are not intended for human or animal diagnostic, therapeutic or commercial use.