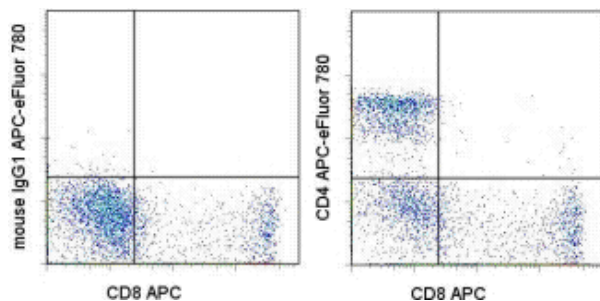


## Anti-Human CD4 APC-eFluor® 780

**Catalog Number:** 47-0049

**Also Known As:** Leu-3, T4

**RUO:** For Research Use Only. Not for use in diagnostic procedures.



Staining of normal human peripheral blood cells with Anti-Human CD8a APC (cat. 17-0088) and Mouse IgG1 kappa Isotype Control APC-eFluor® 780 (cat. 47-4714) (left) or Anti-Human CD4 APC-eFluor® 780 (right). Cells in the lymphocyte gate were used for analysis.

### Product Information

**Contents:** Anti-Human CD4 APC-eFluor® 780

**REF** **Catalog Number:** 47-0049

**Clone:** RPA-T4

**Concentration:** 5 µL (0.5 µg)/test

**Host/Isotype:** Mouse IgG1, kappa

**HLDA Workshop:** IV T114

**Formulation:** aqueous buffer, 0.09% sodium azide, may contain carrier protein/stabilizer

**Temperature Limitation:** Store at 2-8°C. Do not freeze. Light sensitive material. This tandem dye is sensitive to photo-induced oxidation. Protect this vial from light during storage, handling & experimental procedures.



**LOT**

**Batch Code:** Refer to Vial



**Use By:** Refer to Vial



**Caution, contains Azide**

### Description

The RPA-T4 monoclonal antibody reacts with human CD4, a 59 kDa cell surface receptor expressed by a majority of thymocytes, subpopulation of mature T cells (T-helper cells) and in low levels on monocytes. CD4 is a receptor for the human immunodeficiency virus (HIV). RPA-T4 blocks HIV binding and mixed lymphocyte reaction. The RPA-T4 antibody recognizes a different epitope than the OKT4 monoclonal antibody, and these antibodies do not cross-block binding to each other's respective epitopes.

### Applications Reported

This RPA-T4 antibody has been reported for use in flow cytometric analysis.

### Applications Tested

This RPA-T4 antibody has been pre-titrated and tested by flow cytometric analysis of normal human peripheral blood cells. This can be used at 5 µL (0.5 µg) per test. A test is defined as the amount (µg) of antibody that will stain a cell sample in a final volume of 100 µL. Cell number should be determined empirically but can range from 10<sup>5</sup> to 10<sup>8</sup> cells/test.

**APC-eFluor® emits at 780 nm and is excited with the Red laser (633 nm). Please make sure that your instrument is capable of detecting this fluorochrome.**

**Light sensitivity:** Tandem is sensitive photo-induced oxidation. Please protect this vial and stained samples from light.

**Fixation:** Samples can be stored in IC Fixation Buffer (cat. 00-8222) (100 µL cell sample + 100 µL IC Fixation Buffer) or 1-step Fix/Lyse Solution (cat. 00-5333) for up to 3 days in the dark at 4°C with minimal impact on brightness and FRET efficiency/compensation. Some generalizations regarding fluorophore performance after fixation can be made, but clone specific performance should be determined empirically.

### References

Knapp, W., B. Dorken, et al. eds. (1989). Leucocyte Typing IV: White Cell Differentiation Antigens. Oxford University Press. New York.

### Related Products

17-0088 Anti-Human CD8a APC (RPA-T8)

47-4714 Mouse IgG1 K Isotype Control APC-eFluor® 780 (P3.6.2.8.1)

---

Not for further distribution without written consent.

Copyright © 2000-2012 eBioscience, Inc.

Tel: 888.999.1371 or 858.642.2058 • Fax: 858.642.2046 • [www.eBioscience.com](http://www.eBioscience.com) • [info@eBioscience.com](mailto:info@eBioscience.com)