

Product Data Sheet

FITC anti-human CD34

Catalog # / Size: 343603 / 25 tests
343604 / 100 tests

Clone: 561

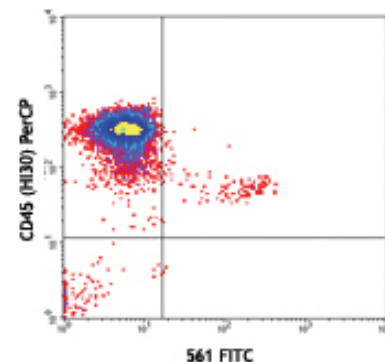
Isotype: Mouse IgG2a, κ

Reactivity: Human, **Cross-Reactivity:** Cynomolgus, Rhesus

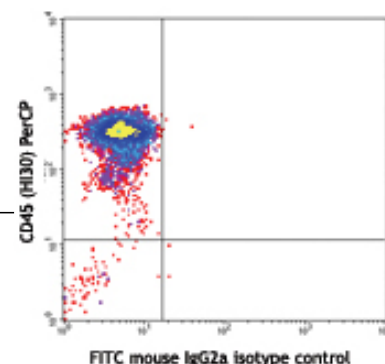
Preparation: The antibody was purified by affinity chromatography, and conjugated with FITC under optimal conditions. The solution is free of unconjugated FITC.

Formulation: Phosphate-buffered solution, pH 7.2, containing 0.09% sodium azide and 0.2% (w/v) BSA (origin USA).

Storage: The antibody solution should be stored undiluted at 4°C and protected from prolonged exposure to light. **Do not freeze.**



Human peripheral blood mononuclear cells stained with CD34 (clone 561) FITC (top) or FITC mouse IgG2a isotype control (bottom) and CD45 (clone H130) PerCP (gated on CD14- cell population).



Applications:

Applications: FC - Quality tested

Recommended Usage: Each lot of this antibody is quality control tested by immunofluorescent staining with flow cytometric analysis. **Test size products are transitioning from 20 μ l to 5 μ l per test.** Please check your vial or your CoA to find the suggested use of this reagent per million cells in 100 μ l staining volume or per 100 μ l of whole blood. It is recommended that the reagent be titrated for optimal performance for each application. Read more at www.biolegend.com/testsize regarding the test size change.

Application Notes: The 561 antibody recognizes a class III group epitope, which is resistant to sialidase/glycoliprotease and chymopapain treatment.

Application References:

1. Croockewit AJ, *et al.* 1998. *Scand. J. Immunol.* 47:82.
2. Rosenzweig M, *et al.* 2001. *J. Med. Primatol.* 30:36.
3. Zhang Y, *et al.* 2012 *Int J Low Extrem Wounds.* 11:264. PubMed.

Description: CD34, also known as gp105-120, is a type I monomeric sialomucin-like glycoprophoprotein with an approximate molecular weight of 105-120 kD. It is selectively expressed on the majority of hematopoietic stem/progenitor cells, bone marrow stromal cells, capillary endothelial cells, embryonic fibroblasts, and some nervous tissue. CD34 is a commonly used marker for identifying human hematopoietic stem/progenitor cells. Based on different sensitivities, four groups of epitopes of CD34 have been described. CD34 mediates cell adhesion and lymphocytes homing through binding to L-selectin and E-selectin ligands.

Related Products:

Product
FITC Mouse IgG2a, κ Isotype Ctrl
Cell Staining Buffer
RBC Lysis Buffer (10X)
Human TruStain FcX™ (Fc Receptor Blocking Solution)

Clone
MOPC-173

Application
FC, ICFC
FC, ICC, ICFC
FC, ICFC
FC, ICC, ICFC



For research use only. Not for diagnostic use. Not for resale. BioLegend will not be held responsible for patent infringement or other violations that may occur with the use of our products.



*These products may be covered by one or more Limited Use Label Licenses (see the BioLegend Catalog or our website, www.biolegend.com/ordering#license). BioLegend products may not be transferred to third parties, resold, modified for resale, or used to manufacture commercial products, reverse engineer functionally similar materials, or to provide a service to third parties without written approval of BioLegend. By use of these products you accept the terms and conditions of all applicable Limited Use Label Licenses. Unless otherwise indicated, these products are for research use only and are not intended for human or animal diagnostic, therapeutic or commercial use.