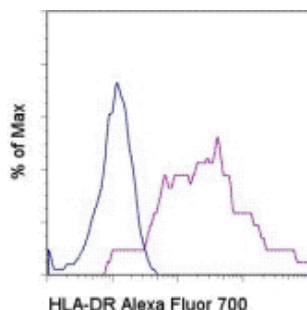


Anti-Human HLA-DR Alexa Fluor® 700

Catalog Number: 56-9956

Also Known As:

RUO: For Research Use Only. Not for use in diagnostic procedures.



Staining of normal human peripheral blood cells with Mouse IgG2a kappa Isotype Control Alexa Fluor® 700 (cat. 56-4732) (blue histogram) or Anti-Human HLA-DR Alexa Fluor® 700 (purple histogram). Cells in the monocyte gate were used for analysis.

Product Information

Contents: Anti-Human HLA-DR Alexa Fluor® 700


REF **Catalog Number:** 56-9956

Clone: LN3


Concentration: 5 µl (0.01 µg)/test

Host/Isotype: Mouse IgG2b, kappa

Formulation: aqueous buffer, 0.09% sodium azide, may contain carrier protein/stabilizer

 **Temperature Limitation:** Store at 2-8°C. Do not freeze. Light sensitive material.

LOT **Batch Code:** Refer to Vial

 **Use By:** Refer to Vial

 **Caution, contains Azide**

Description

The LN3 mAb reacts with the human major histocompatibility complex (MHC) class II, HLA-DR. HLA-DR is expressed on the surface of human antigen presenting cells (APC) including B cells, monocytes, macrophages, DCs, and activated T cells. HLA-DR is a heterodimeric transmembrane protein composed of α and β subunits and plays an important role in the presentation of peptides to CD4⁺ T lymphocytes.

Applications Reported

This LN3 antibody has been reported for use in flow cytometric analysis.

The Alexa Fluor® 700 emits at 723 nm and can be excited with the He-Ne 633 laser. Most instruments will require a 685 LP mirror and 710/20 filter. Please make sure that your instrument is capable of detecting this fluorochrome.

Applications Tested

This LN3 antibody has been pre-titrated and tested by flow cytometric analysis of human peripheral blood leukocytes. This can be used at 5 µl (0.01 µg)/per test. A test is defined as the amount (µg)/test of antibody that will stain a cell sample in a final volume of 100 µL. Cell number should be determined empirically but can range from 10⁵ to 10⁸ cells/test.

References

Fullen, D. R. and J. T. Headington. 1998. Factor XIIIa-positive dermal dendritic cells and HLA-DR expression in radial versus vertical growth-phase melanomas. *J Cutan Pathol.* 25(10): 553-8.

Hua, Z. X., K. E. Tanaka, et al. 1998. Immunoreactivity for LN2 and LN3 distinguishes small cell carcinomas from non-small cell carcinomas in the lung. *Hum Pathol.* 29(12): 1441-6.

Ioachim, H. L., S. E. Pambuccian, et al. 1996. Lymphoid monoclonal antibodies reactive with lung tumors. Diagnostic applications. *Am J Surg Pathol.* 20(1): 64-71.

Davey, F. R., S. Olson, et al. 1988. The immunophenotyping of extramedullary myeloid cell tumors in paraffin-embedded tissue sections. *Am J Surg Pathol.* 12(9): 699-707.

Norton, A. J. and P. G. Isaacson. 1987. Detailed phenotypic analysis of B-cell lymphoma using a panel of antibodies reactive in routinely fixed wax-embedded tissue. *Am J Pathol.* 128(2): 225-40.

Related Products

56-4732 Mouse IgG2b K Isotype Control Alexa Fluor® 700

Not for further distribution without written consent.

Copyright © 2000-2010 eBioscience, Inc.

Tel: 888.999.1371 or 858.642.2058 • Fax: 858.642.2046 • www.eBioscience.com • info@eBioscience.com