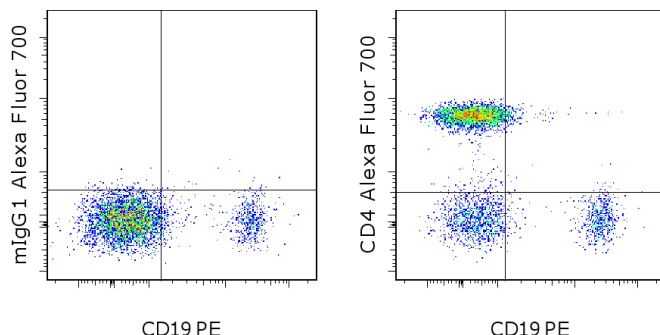


Anti-Human CD4 Alexa Fluor® 700

Catalog Number: 56-0049

Also known as: Leu-3, T4

RUO: For Research Use Only. Not for use in diagnostic procedures.



Staining of normal human peripheral blood cells with Anti-Human CD19 PE (cat. 12-0199) and Mouse IgG1 K Isotype Control Alexa Fluor® 700 (cat. 56-4714) (left) or Anti-Human CD4 Alexa Fluor® 700 (right). Cells in the lymphocyte gate were used for analysis.

Product Information

Contents: Anti-Human CD4 Alexa Fluor® 700



Catalog Number: 56-0049

Clone: RPA-T4

Concentration: 5 µL (0.25 µg)/test

Host/Isotype: Mouse IgG1, kappa

HLDA Workshop: IV T114



Formulation: aqueous buffer, 0.09% sodium azide, may contain carrier protein/stabilizer

Temperature Limitation: Store at 2-8°C. Do not freeze. Light sensitive material.



Batch Code: Refer to vial



Use By: Refer to vial



Caution, contains Azide

Description

The RPA-T4 monoclonal antibody reacts with human CD4, a 59 kDa cell surface receptor expressed by a majority of thymocytes, subpopulation of mature T cells (T-helper cells) and in low levels on monocytes. CD4 is a receptor for the human immunodeficiency virus (HIV). RPA-T4 blocks HIV binding and mixed lymphocyte reaction. The RPA-T4 antibody recognizes a different epitope than the OKT4 monoclonal antibody, and these antibodies do not cross-block binding to each other's respective epitopes.

Applications Reported

This RPA-T4 antibody has been reported for use in flow cytometric analysis.

The Alexa Fluor® 700 emits at 723 nm and can be excited with the He-Ne 633 laser. Most instruments will require a 685 LP mirror and 710/20 filter. Please make sure that your instrument is capable of detecting this fluorochrome.

Applications Tested

This RPA-T4 antibody has been pre-titrated and tested by flow cytometric analysis of normal human peripheral blood cells. This can be used at 5 µL (0.25 µg) per test. A test is defined as the amount (µg) of antibody that will stain a cell sample in a final volume of 100 µL. Cell number should be determined empirically but can range from 10⁵ to 10⁸ cells/test.

References

Knapp, W., B. Dorken, et al. eds. (1989). Leucocyte Typing IV: White Cell Differentiation Antigens. Oxford University Press. New York.

Related Products

12-0199 Anti-Human CD19 PE (HIB19)

56-4714 Mouse IgG1 K Isotype Control Alexa Fluor® 700 (P3.6.2.8.1)

Not for further distribution without written consent.

Copyright © 2000-2012 eBioscience, Inc.

Tel: 888.999.1371 or 858.642.2058 • Fax: 858.642.2046 • www.ebioscience.com • info@ebioscience.com