

# Product Data Sheet

## APC anti-human CD23

**Catalog # / Size:** 338513 / 25 tests  
338514 / 100 tests

**Clone:** EBVCS-5

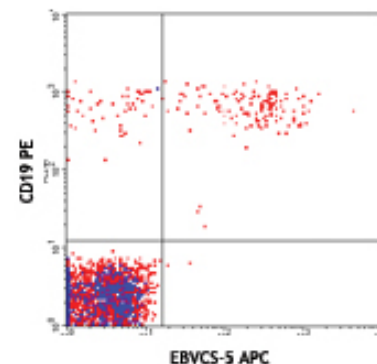
**Isotype:** Mouse IgG1  $\kappa$

**Reactivity:** Human

**Preparation:** The antibody was purified by affinity chromatography, and conjugated with APC under optimal conditions. The solution is free of unconjugated APC and unconjugated antibody.

**Formulation:** Phosphate-buffered solution, pH 7.2, containing 0.09% sodium azide and 0.2% (w/v) BSA (origin USA).

**Storage:** The antibody solution should be stored undiluted at 4°C and protected from prolonged exposure to light. **Do not freeze.**



Human peripheral blood lymphocytes stained with CD19 PE and EBVCS-5 APC

## Applications:

**Applications:** FC - Quality tested

**Recommended Usage:** Each lot of this antibody is quality control tested by immunofluorescent staining with flow cytometric analysis. **Test size products are transitioning from 20  $\mu$ l to 5  $\mu$ l per test.** Please check your vial or your CoA to find the suggested use of this reagent per million cells in 100  $\mu$ l staining volume or per 100  $\mu$ l of whole blood. It is recommended that the reagent be titrated for optimal performance for each application. Read more at [www.biolegend.com/testsize](http://www.biolegend.com/testsize) regarding the test size change.

**Application References:** 1. Sugden B and Metzenberg S. 1983. *J. Virol.* 46:800-807.

**Description:** CD23 is a 45 kD protein, also known as Leu-20, Fc $\epsilon$ RII, IgE Fc receptor, BLAST-2, B6, and low affinity IgE receptor. It is a member of the Ig family, expressed on most mature B cells, B cells in follicular mantle (but not in proliferating germinal center cells, follicular dendritic cells, monocytes, eosinophils, Langerhans cells, and a subset of T cells (10-15% of tonsillar T cells). CD23 responds to high levels of IgE by downregulating IgE secretion. In human monocytes, CD23 triggering results in release of pro-inflammatory cytokines including TNF- $\alpha$ , IL-1, IL-6, and GM-CSF. CD23 can be proteolytically cleaved to generate soluble CD23 fragments of various molecular weights. In chronic lymphocytic leukemia, levels of soluble CD23 in the serum can be used as a prognostic marker to identify patients at high risk for disease progression. Alternate splicing of exon 2 can also generate two cell-surface isoforms of CD23 differing by 6 amino acids in their cytoplasmic region. The D3.6 antibody against human CD23 has been shown to be useful for flow cytometry.

**Antigen References:** 1. Ludin C, *et al.* 1987. *EMBO J.* 6:109.  
2. Delespesse G, *et al.* 1992. *Immunol. Rev.* 125:77.  
3. Flores-Romo L, *et al.* 1993. *Science* 261:1038.  
4. Armant M, *et al.* 1994. *J. Exp. Med.* 180:1005.

### Related Products:

Product  
APC Mouse IgG1,  $\kappa$  Isotype Ctrl  
Cell Staining Buffer  
RBC Lysis Buffer (10X)  
Human TruStain FcX™ (Fc Receptor Blocking Solution)

Clone  
MOPC-21

Application  
FC, ICFC  
FC, ICC, ICFC  
FC, ICFC  
FC, ICC, ICFC



For research use only. Not for diagnostic use. Not for resale. BioLegend will not be held responsible for patent infringement or other violations that may occur with the use of our products.



\*These products may be covered by one or more Limited Use Label Licenses (see the BioLegend Catalog or our website, [www.biolegend.com/ordering#license](http://www.biolegend.com/ordering#license)). BioLegend products may not be transferred to third parties, resold, modified for resale, or used to manufacture commercial products, reverse engineer functionally similar materials, or to provide a service to third parties without written approval of BioLegend. By use of these products you accept the terms and conditions of all applicable Limited Use Label Licenses. Unless otherwise indicated, these products are for research use only and are not intended for human or animal diagnostic, therapeutic or commercial use.