

# Product Data Sheet

## Purified anti-human CD21

**Catalog # / Size:** 315102 / 100 µg

**Clone:** LT21

**Isotype:** Mouse IgG1, κ

**Immunogen:** B lymphoblastoid cell line IM9

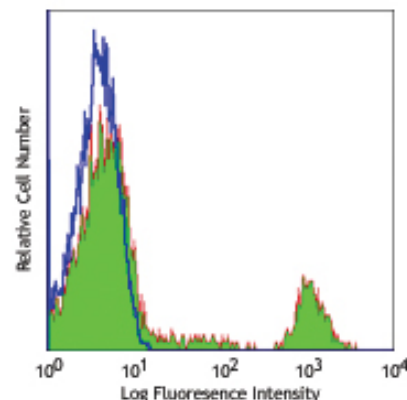
**Reactivity:** Human

**Preparation:** The antibody was purified by affinity chromatography.

**Formulation:** Phosphate-buffered solution, pH 7.2, containing 0.09% sodium azide.

**Concentration:** 0.5 mg/ml

**Storage:** The antibody solution should be stored undiluted at 4°C.



Human peripheral blood lymphocytes stained with purified LT21, followed by anti-mouse IgGs FITC

## Applications:

**Applications:** FC - Quality tested

**Recommended Usage:** Each lot of this antibody is quality control tested by immunofluorescent staining with flow cytometric analysis. For immunofluorescent staining, the suggested use of this reagent is ≤2.0 µg per million cells in 100 µl volume. It is recommended that the reagent be titrated for optimal performance for each application.

**Application References:** 1. Kishimoto T, *et al.* Eds. 1997. Leucocyte Typing VI. Garland Publishing Inc. London.

**Description:** CD21 is a 145 kD transmembrane protein, also known as complement C3d receptor (C3dR), complement receptor 2 (CR2), and Epstein-Barr virus receptor. CD21 is expressed on B cells, follicular dendritic cells, subsets of normal thymocytes and T cells, and some epithelial cells. CD21 is the receptor used by Epstein-Barr virus to infect B cells and is also the complement receptor for C3d. CD21 has also been shown to interact with a number of proteins, including CD23, CD19, annexin VI, CD81, iC3b, complement receptor 1 (CR1, CD35), and interferon-alpha 1 (IFN-α 1).

**Antigen References:** 1. Leukocyte Typing VI. Kishimoto T (Eds) Garland Publishing Inc. (1997)  
2. Moore MD, *et al.* 1987. *Proc. Natl. Acad. Sci.* 84:9194.  
3. Szakonyi G, *et al.* 2001. *Science* 292:1725.  
4. Weis JJ, *et al.* 1984. *Proc. Natl. Acad. Sci.* 81:881.

### Related Products:

**Product**  
Purified Mouse IgG1, κ Isotype Ctrl  
APC Goat anti-mouse IgG (minimal x-reactivity)  
PE Goat anti-mouse IgG (minimal x-reactivity)  
Cell Staining Buffer  
RBC Lysis Buffer (10X)

**Clone**  
MOPC-21  
Poly4053  
Poly4053

**Application**  
FC, ICFC, ICC, IF, IHC, IP, WB  
FC  
FC  
FC, ICC, ICFC  
FC, ICFC



For research use only. Not for diagnostic use. Not for resale. BioLegend will not be held responsible for patent infringement or other violations that may occur with the use of our products.



\*These products may be covered by one or more Limited Use Label Licenses (see the BioLegend Catalog or our website, [www.biollegend.com/ordering#license](http://www.biollegend.com/ordering#license)). BioLegend products may not be transferred to third parties, resold, modified for resale, or used to manufacture commercial products, reverse engineer functionally similar materials, or to provide a service to third parties without written approval of BioLegend. By use of these products you accept the terms and conditions of all applicable Limited Use Label Licenses. Unless otherwise indicated, these products are for research use only and are not intended for human or animal diagnostic, therapeutic or commercial use.