

# Product Data Sheet

## PerCP/Cy5.5 anti-human CD25

**Catalog # / Size:** 302625 / 25 tests  
302626 / 100 tests

**Clone:** BC96

**Isotype:** Mouse IgG1,  $\kappa$

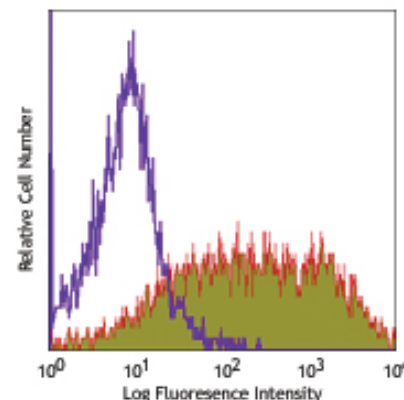
**Workshop Number:** V T-072

**Reactivity:** Human, **Cross-Reactivity:** Baboon, Chimpanzee, Cynomolgus, Rhesus, Pigtailed Macaque

**Preparation:** The antibody was purified by affinity chromatography, and conjugated with PerCP/Cy5.5 under optimal conditions. The solution is free of unconjugated PerCP/Cy5.5 and unconjugated antibody.

**Formulation:** Phosphate-buffered solution, pH 7.2, containing 0.09% sodium azide and 0.2% (w/v) BSA (origin USA).

**Storage:** The antibody solution should be stored undiluted at 4°C and protected from prolonged exposure to light. **Do not freeze.**



PHA-stimulated (3 day) human peripheral blood lymphocytes were stained with CD25 (clone BC96) PerCP/Cy5.5 (filled histogram) or mouse IgG1,  $\kappa$  PerCP/Cy5.5 isotype control (open histogram).

## Applications:

**Applications:** FC - Quality tested

**Recommended Usage:** Each lot of this antibody is quality control tested by immunofluorescent staining with flow cytometric analysis. **Test size products are transitioning from 20  $\mu$ l to 5  $\mu$ l per test.** Please check your vial or your CoA to find the suggested use of this reagent per million cells in 100  $\mu$ l staining volume or per 100  $\mu$ l of whole blood. It is recommended that the reagent be titrated for optimal performance for each application. Read more at [www.biolegend.com/testsize](http://www.biolegend.com/testsize) regarding the test size change.  
\* PerCP/Cy5.5 has a maximum absorption of 482 nm and 564 nm and a maximum emission of 690 nm.

Cy3, Cy5, Cy5.5 and Cy7 are subject to proprietary rights of GE Healthcare Bio-Sciences Corp. and Carnegie Mellon University and made and sold under license from GE Healthcare Bio-Sciences Corp. Sale of this product is licensed for research use only.

**Application References:** 1. Schlossman S, *et al.* Eds. 1995. Leucocyte Typing V. Oxford University Press. New York.  
2. Kmiecik M, *et al.* 2009. *J. Transl. Med.* 7:89. (FC) PubMed

**Description:** CD25 is a 55 kD type I transmembrane glycoprotein also known as the low affinity IL-2 receptor  $\alpha$  chain or Tac. It is expressed on progenitor lymphocytes, activated T and B cells, and activated monocytes/macrophages. CD25 is also expressed on a subset of non-stimulated CD4<sup>+</sup> T cells termed T regulatory cells. CD25 associates with the IL-2 receptor  $\beta$  (CD122) and common  $\gamma$  chains (CD132) to form the high affinity IL-2R complex.

**Antigen References:** 1. Taniguchi T, *et al.* 1993. *Cell* 73:5.  
2. Waldmann T. 1991. *J. Biol. Chem.* 266:2681.

### Related Products:

**Product**  
 Cell Staining Buffer  
 RBC Lysis Buffer (10X)  
 PerCP/Cy5.5 Mouse IgG1,  $\kappa$  Isotype Ctrl  
 Human TruStain FcX™ (Fc Receptor Blocking Solution)

### Clone

MOPC-21

### Application

FC, ICC, ICFC  
 FC, ICFC  
 FC, ICFC  
 FC, ICC, ICFC



For research use only. Not for diagnostic use. Not for resale. BioLegend will not be held responsible for patent infringement or other violations that may occur with the use of our products.



\*These products may be covered by one or more Limited Use Label Licenses (see the BioLegend Catalog or our website, [www.biolegend.com/ordering#license](http://www.biolegend.com/ordering#license)). BioLegend products may not be transferred to third parties, resold, modified for resale, or used to manufacture commercial products, reverse engineer functionally similar materials, or to provide a service to third parties without written approval of BioLegend. By use of these products you accept the terms and conditions of all applicable Limited Use Label Licenses. Unless otherwise indicated, these products are for research use only and are not intended for human or animal diagnostic, therapeutic or commercial use.