

# Product Data Sheet

## Purified anti-human CD25

**Catalog # / Size:** 302601 / 25 µg  
302602 / 100 µg

**Clone:** BC96

**Isotype:** Mouse IgG1, κ

**Workshop Number:** V T-072

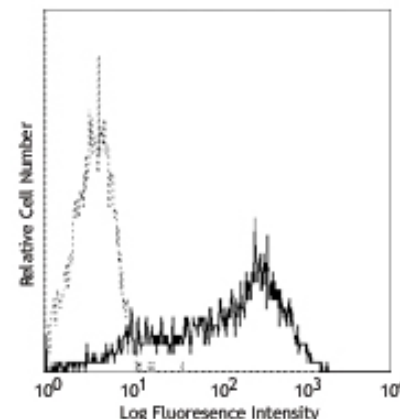
**Reactivity:** Human, **Cross-Reactivity:** Baboon, Chimpanzee, Cynomolgus, Rhesus, Pigtailed Macaque

**Preparation:** The antibody was purified by affinity chromatography.

**Formulation:** Phosphate-buffered solution, pH 7.2, containing 0.09% sodium azide.

**Concentration:** 0.5 mg/ml

**Storage:** The antibody solution should be stored undiluted at 4°C.



PHA-stimulated (3 day) human peripheral blood lymphocytes were stained with purified CD25 (clone BC96) (solid line) or purified mouse IgG1, κ isotype control (dotted line).

## Applications:

**Applications:** FC - Quality tested

**Recommended Usage:** Each lot of this antibody is quality control tested by immunofluorescent staining with flow cytometric analysis. For immunofluorescent staining, the suggested use of this reagent is ≤0.5 µg per million cells in 100 µl volume. It is recommended that the reagent be titrated for optimal performance for each application.

**Application References:** 1. Schlossman S, *et al.* Eds. 1995. Leucocyte Typing V. Oxford University Press. New York.  
2. Kmiecik M, *et al.* 2009. *J. Transl. Med.* 7:89. (FC) PubMed  
3. Li J, *et al.* 2013. *Am J respir Cell Mol Biol.* 48:314. PubMed.

**Description:** CD25 is a 55 kD type I transmembrane glycoprotein also known as the low affinity IL-2 receptor α chain or Tac. It is expressed on progenitor lymphocytes, activated T and B cells, and activated monocytes/macrophages. CD25 is also expressed on a subset of non-stimulated CD4<sup>+</sup> T cells termed T regulatory cells. CD25 associates with the IL-2 receptor β (CD122) and common γ chains (CD132) to form the high affinity IL-2R complex.

**Antigen References:** 1. Taniguchi T, *et al.* 1993. *Cell* 73:5.  
2. Waldmann T. 1991. *J. Biol. Chem.* 266:2681.

**Related Products:** **Product**  
Purified Mouse IgG1, κ Isotype Ctrl  
Cell Staining Buffer  
RBC Lysis Buffer (10X)

**Clone**  
MOPC-21

**Application**  
FC, ICFC, ICC, IF, IHC, IP, WB  
FC, ICC, ICFC  
FC, ICFC



For research use only. Not for diagnostic use. Not for resale. BioLegend will not be held responsible for patent infringement or other violations that may occur with the use of our products.



\*These products may be covered by one or more Limited Use Label Licenses (see the BioLegend Catalog or our website, [www.biolegend.com/ordering#license](http://www.biolegend.com/ordering#license)). BioLegend products may not be transferred to third parties, resold, modified for resale, or used to manufacture commercial products, reverse engineer functionally similar materials, or to provide a service to third parties without written approval of BioLegend. By use of these products you accept the terms and conditions of all applicable Limited Use Label Licenses. Unless otherwise indicated, these products are for research use only and are not intended for human or animal diagnostic, therapeutic or commercial use.