

Product Data Sheet

FITC anti-human CD22

Catalog # / Size: 302504 / 100 tests

Clone: HIB22

Isotype: Mouse IgG1, κ

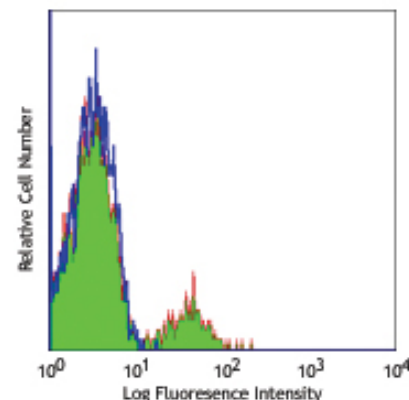
Workshop Number: V CD22.14

Reactivity: Human, **Cross-Reactivity:** Chimpanzee

Preparation: The antibody was purified by affinity chromatography, and conjugated with FITC under optimal conditions. The solution is free of unconjugated FITC.

Formulation: Phosphate-buffered solution, pH 7.2, containing 0.09% sodium azide and 0.2% (w/v) BSA (origin USA).

Storage: The antibody solution should be stored undiluted at 4°C and protected from prolonged exposure to light. **Do not freeze.**



Human peripheral blood lymphocytes stained HIB22 FITC

Applications:

Applications: FC - Quality tested

Recommended Usage: Each lot of this antibody is quality control tested by immunofluorescent staining with flow cytometric analysis. **Test size products are transitioning from 20 μ l to 5 μ l per test.** Please check your vial or your CoA to find the suggested use of this reagent per million cells in 100 μ l staining volume or per 100 μ l of whole blood. It is recommended that the reagent be titrated for optimal performance for each application. Read more at www.biolegend.com/testsize regarding the test size change.

Application Notes: Additional reported applications (for the relevant formats) include: immunohistochemical staining of acetone-fixed frozen tissue sections.

Application References:

- Schlossman S, et al. Eds. 1995. Leukocyte Typing V: White Cell Differentiation Antigens. Oxford University Press. New York.
- Clark E. 1993. *J. Immunol.* 150:4715.
- Shan D and O. Press. 1995. *J. Immunol.* 154:4466.
- Gleason MK, et al. 2012. *Mol Cancer Ther.* 11:2674. PubMed.

Description: CD22 is a 130 kD type I transmembrane glycoprotein also known as Siglec-2 and BL-CAM. It is a member of the immunoglobulin superfamily (sialoadhesion subgroup). CD22 is expressed in the cytoplasm of pro-B and pre-B cells, and on the surface of mature B and activated B cells, but not on plasma cells. CD22 is present in the B cell receptor complex and associates with SHP-1, Syk, Lck, Lyn, and phospholipase C γ 1. A primary function of CD22 is thought to be in limiting antigen receptor signaling by modulating B cell activation threshold. CD22 has been shown to bind to CD45RO and CD75, although the natural ligands for this molecule remain controversial.

Antigen References:

- Clark E. 1993. *J. Immunol.* 150:4715.
- Shan D, et al. 1995. *J. Immunol.* 154:4466.

Related Products:

Product
FITC anti-human CD19
FITC Mouse IgG1, κ Isotype Ctrl
Cell Staining Buffer
RBC Lysis Buffer (10X)
Human TruStain FcX™ (Fc Receptor Blocking Solution)

Clone
HIB19
MOPC-21

Application
FC
FC, ICFC
FC, ICC, ICFC
FC, ICFC
FC, ICC, ICFC



For research use only. Not for diagnostic use. Not for resale. BioLegend will not be held responsible for patent infringement or other violations that may occur with the use of our products.



*These products may be covered by one or more Limited Use Label Licenses (see the BioLegend Catalog or our website, www.biolegend.com/ordering#license). BioLegend products may not be transferred to third parties, resold, modified for resale, or used to manufacture commercial products, reverse engineer functionally similar materials, or to provide a service to third parties without written approval of BioLegend. By use of these products you accept the terms and conditions of all applicable Limited Use Label Licenses. Unless otherwise indicated, these products are for research use only and are not intended for human or animal diagnostic, therapeutic or commercial use.