

Product Data Sheet

PE anti-human CD18

Catalog # / Size: 302107 / 25 tests
302108 / 100 tests

Clone: TS1/18

Isotype: Mouse IgG1, κ

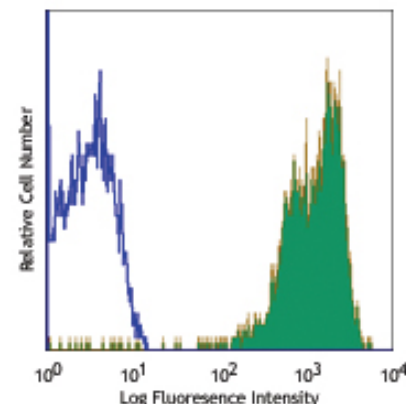
Workshop Number: V AS162

Reactivity: Human, **Cross-Reactivity:** Swine (Pig, Porcine)

Preparation: The antibody was purified by affinity chromatography, and conjugated with PE under optimal conditions. The solution is free of unconjugated PE and unconjugated antibody.

Formulation: Phosphate-buffered solution, pH 7.2, containing 0.09% sodium azide and 0.2% (w/v) BSA (origin USA).

Storage: The antibody solution should be stored undiluted at 4°C and protected from prolonged exposure to light. **Do not freeze.**



Human peripheral blood lymphocytes stained with TS1/18 PE

Applications:

Applications: FC - Quality tested

Recommended Usage: Each lot of this antibody is quality control tested by immunofluorescent staining with flow cytometric analysis. **Test size products are transitioning from 20 μ l to 5 μ l per test.** Please check your vial or your CoA to find the suggested use of this reagent per million cells in 100 μ l staining volume or per 100 μ l of whole blood. It is recommended that the reagent be titrated for optimal performance for each application. Read more at www.biolegend.com/testsize regarding the test size change.

Application Notes: Additional reported applications (for the relevant formats) include: inhibition of cell adhesion and migration^{3,4}. The LEAF™ Purified antibody (Endotoxin <0.1 EU/ μ g, Azide-Free, 0.2 μ m filtered) is recommended for functional assays (Cat. No. 302112). For highly sensitive assays, we recommend Ultra-LEAF™ purified antibody (Cat. No. 302116) with a lower endotoxin limit than standard LEAF™ purified antibodies (Endotoxin <0.01 EU/ μ g).

Application References:

- Schlossman S, *et al.* 1995. Leucocyte Typing V. Oxford University Press. New York.
- Kishimoto T, *et al.* 1997. Leucocyte Typing VI. Garland Press. London.
- Van Epps DE, *et al.* 1989. *J. Immunol.* 143:3207. (Block)
- Meerschaert J, *et al.* 1994. *J. Immunol.* 152:1915. (Block)
- Sithu SD, *et al.* 2007. *J. Biol. Chem.* doi:10.1074/jbc.M611273200.
- Sommaggio R, *et al.* 2012. *J. Immunol.* 188:2075. PubMed.

Description: CD18 is a 90-95 kD type I transmembrane protein also known as integrin β_2 subunit, LFA-1 β subunit, and β_2 integrin. CD18 non-covalently associates with CD11a, CD11b or CD11c. CD18 is expressed on all leukocytes. CD18 and associated α chains function in adhesion and signaling in hematopoietic cells.

Antigen References:

- Anderson D, *et al.* 1987. *Annu. Rev. Med.* 38:175.
- Springer T. 1994. *Cell* 76:301.

Related Products:

Product
 PE anti-human CD11c
 PE anti-human CD11b (activated)
 PE anti-human CD11a
 PE anti-human CD11b
 PE anti-human CD18
 PE Mouse IgG1, κ Isotype Ctrl
 Cell Staining Buffer
 RBC Lysis Buffer (10X)
 Human TruStain FcX™ (Fc Receptor Blocking Solution)

Clone

3.9
 CBRM1/5
 HI111
 ICRF44
 TS1/18
 MOPC-21

Application

FC
 FC
 FC
 FC
 FC
 FC, ICFC
 FC, ICC, ICFC
 FC, ICFC
 FC, ICC, ICFC



For research use only. Not for diagnostic use. Not for resale. BioLegend will not be held responsible for patent infringement or other violations that may occur with the use of our products.



*These products may be covered by one or more Limited Use Label Licenses (see the BioLegend Catalog or our website, www.biolegend.com/ordering#license). BioLegend products may not be transferred to third parties, resold, modified for resale, or used to manufacture commercial products, reverse engineer functionally similar materials, or to provide a service to third parties without written approval of BioLegend. By use of these products you accept the terms and conditions of all applicable Limited Use Label Licenses. Unless otherwise indicated, these products are for research use only and are not intended for human or animal diagnostic, therapeutic or commercial use.