

# Product Data Sheet

## FITC anti-human CD15 (SSEA-1)

**Catalog # / Size:** 301903 / 25 tests  
301904 / 100 tests

**Clone:** HI98

**Isotype:** Mouse IgM,  $\kappa$

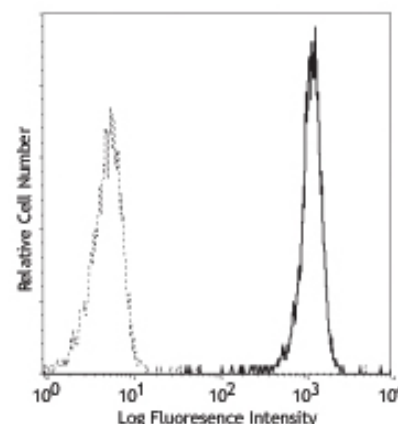
**Workshop Number:** IV M141

**Reactivity:** Human, **Cross-Reactivity:** Chimpanzee

**Preparation:** The antibody was conjugated with FITC under optimal conditions, and is at >85% purity. The solution is free of unconjugated FITC.

**Formulation:** Phosphate-buffered solution, pH 7.2, containing 0.09% sodium azide and 0.2% (w/v) BSA (origin USA).

**Storage:** The antibody solution should be stored undiluted at 4°C and protected from prolonged exposure to light. **Do not freeze.**



Human peripheral blood granulocytes stained with HI98 FITC

## Applications:

**Applications:** FC - Quality tested

**Recommended Usage:** Each lot of this antibody is quality control tested by immunofluorescent staining with flow cytometric analysis. **Test size products are transitioning from 20  $\mu$ l to 5  $\mu$ l per test.** Please check your vial or your CoA to find the suggested use of this reagent per million cells in 100  $\mu$ l staining volume or per 100  $\mu$ l of whole blood. It is recommended that the reagent be titrated for optimal performance for each application. Read more at [www.biolegend.com/testsize](http://www.biolegend.com/testsize) regarding the test size change.

**Application Notes:** Clone HI98 has been described to specifically react with 3-fucosyl-N-acetylactosamine (3-FAL), a 220 kD carbohydrate structure, also called X-hapten, SSEA-1, CD15, or Lewis X. Additional reported applications (for the relevant formats) include: immunohistochemical staining of acetone-fixed frozen sections and formalin-fixed paraffin-embedded tissue sections.

**Application References:**

1. Knapp W, *et al.* Eds. 1989. Leucocyte Typing IV. Oxford University Press. New York.
2. Schlossman S, *et al.* Eds. 1995. Leucocyte Typing V. Oxford University Press. New York.
3. McMichael A, *et al.* 1987. Leucocyte Typing III. Oxford University Press. New York.
4. Yoshino N, *et al.* 2000. *Exp. Anim. (Tokyo)* 49:97. (FC)

**Description:** CD15 is 3-fucosyl-N-acetylactosamine (3-FAL), also known as Lewis X, 3-FAL, X-hapten, and SSEA-1. CD15 is expressed on granulocytes and monocytes. It has also been shown to be expressed on Langerhans cells and some malignant cells. CD15 has been implicated in adhesion, as well as chemotaxis, phagocytosis, and bactericidal activity.

**Antigen References:** 1. Stocks SC, *et al.* 1990. *Biochem. J.* 268:275.

### Related Products:

Product	Clone	Application
FITC anti-human CD33	HIM3-4	FC
APC anti-human CD13	WM15	FC
PE/Cy5 anti-human CD33	WM53	FC
Cell Staining Buffer		FC, ICC, ICFC
RBC Lysis Buffer (10X)		FC, ICFC
FITC Mouse IgM, $\kappa$ Isotype Ctrl	MM-30	FC, ICFC
Human TruStain FcX™ (Fc Receptor Blocking Solution)		FC, ICC, ICFC



For research use only. Not for diagnostic use. Not for resale. BioLegend will not be held responsible for patent infringement or other violations that may occur with the use of our products.



\*These products may be covered by one or more Limited Use Label Licenses (see the BioLegend Catalog or our website, [www.biolegend.com/ordering#license](http://www.biolegend.com/ordering#license)). BioLegend products may not be transferred to third parties, resold, modified for resale, or used to manufacture commercial products, reverse engineer functionally similar materials, or to provide a service to third parties without written approval of BioLegend. By use of these products you accept the terms and conditions of all applicable Limited Use Label Licenses. Unless otherwise indicated, these products are for research use only and are not intended for human or animal diagnostic, therapeutic or commercial use.