

# Product Data Sheet

## Purified anti-human CD13

**Catalog # / Size:** 301701 / 25 µg  
301702 / 100 µg

**Clone:** WM15

**Isotype:** Mouse IgG1, κ

**Workshop Number:** IV M44

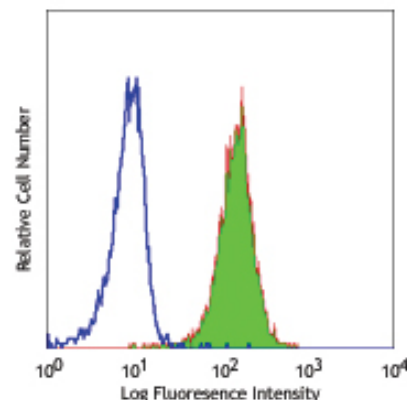
**Reactivity:** Human, **Cross-Reactivity:** Chimpanzee, Baboon, Cotton-topped Tamarin

**Preparation:** The antibody was purified by affinity chromatography.

**Formulation:** Phosphate-buffered solution, pH 7.2, containing 0.09% sodium azide.

**Concentration:** 0.5 mg/ml

**Storage:** The antibody solution should be stored undiluted at 4°C.



Human peripheral blood granulocytes stained with purified WM15, followed by anti-mouse IgGs FITC

## Applications:

**Applications:** FC - *Quality tested*  
IHC - *Reported in the literature*

**Recommended Usage:** Each lot of this antibody is quality control tested by immunofluorescent staining with flow cytometric analysis. For immunofluorescent staining, the suggested use of this reagent is ≤2.0 µg per million cells in 100 µl volume. It is recommended that the reagent be titrated for optimal performance for each application.

**Application Notes:** Additional reported applications (for the relevant formats) include: inhibition of tumor-cell invasion and blocking of aminopeptidase activities<sup>2,3</sup>, and immunohistochemical staining of acetone-fixed frozen tissue sections<sup>5</sup>. WM15 does not recognize formalin-fixed or paraffin-embedded tissue sections<sup>5</sup>. The LEAF™ purified antibody (Endotoxin <0.1 EU/µg, Azide-Free, 0.2 µm filtered) is recommended for functional assays (Cat. No. 301708).

**Application References:**

1. Knapp W, *et al.* 1989. Leucocyte Typing IV. Oxford University Press. New York.
2. Saiki I, *et al.* 1993. *Int J Cancer*. 54:137. (Block)
3. Rosenzweig M, *et al.* 2000. *Blood* 95:453. (Block)
4. Kawase M, *et al.* 2008. *J Virol*. 83:712. (Block) PubMed
5. Di Matteo P, *et al.* 2011. *J. Histochem. Cytochem.* 59:47. (IHC)

**Description:** CD13 is a 150-170 kD type II transmembrane glycoprotein also known as aminopeptidase N, APN, and gp150. This zinc metallopeptidase as a homodimer is expressed on granulocytes, myeloid progenitors, endothelial cells, epithelial cells and subset of granular lymphoid cells. It is not expressed on platelets or erythrocytes. CD13 is thought to be involved in the metabolism of many regulatory peptides and functions in antigen processing and the cleavage of chemokines such as MIP-1. CD13 serves as the cellular receptor for Coronavirus.

**Antigen References:**

1. Shipp M, *et al.* 1993. *Blood* 82:1052.
2. Larsen S, *et al.* 1996. *J. Exp. Med.* 184:183.

### Related Products:

**Product**  
Purified anti-human CD33  
Purified anti-human CD33  
Purified Mouse IgG1, κ Isotype Ctrl  
AKP Goat anti-mouse IgG (minimal x-reactivity)  
APC Goat anti-mouse IgG (minimal x-reactivity)  
Biotin Goat anti-mouse IgG (minimal x-reactivity)  
FITC Goat anti-mouse IgG (minimal x-reactivity)  
HRP Goat anti-mouse IgG (minimal x-reactivity)  
PE Goat anti-mouse IgG (minimal x-reactivity)  
Cell Staining Buffer  
RBC Lysis Buffer (10X)

### Clone

HIM3-4  
WM53  
MOPC-21  
Poly4053  
Poly4053  
Poly4053  
Poly4053  
Poly4053  
Poly4053

### Application

FC  
FC, IP, WB, CyTOF®  
FC, ICFC, ICC, IF, IHC, IP, WB  
ELISA, WB, IHC  
FC  
FC, ELISA, IHC, IF, WB  
FC  
ELISA, IHC, WB  
FC  
FC, ICC, ICFC  
FC, ICFC



For research use only. Not for diagnostic use. Not for resale. BioLegend will not be held responsible for patent infringement or other violations that may occur with the use of our products.



\*These products may be covered by one or more Limited Use Label Licenses (see the BioLegend Catalog or our website, [www.biollegend.com/ordering#license](http://www.biollegend.com/ordering#license)). BioLegend products may not be transferred to third parties, resold, modified for resale, or used to manufacture commercial products, reverse engineer functionally similar materials, or to provide a service to third parties without written approval of BioLegend. By use of these products you accept the terms and conditions of all applicable Limited Use Label Licenses. Unless otherwise indicated, these products are for research use only and are not intended for human or animal diagnostic, therapeutic or commercial use.