

Product Data Sheet

LEAF™ Purified anti-human CD11c

Catalog # / Size: 301615 / 50 µg
301616 / 500 µg

Clone: 3.9

Isotype: Mouse IgG1, κ

Workshop Number: III NL707

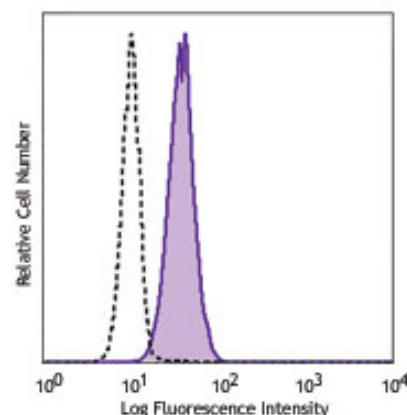
Reactivity: Human, **Cross-Reactivity:** Chimpanzee, Baboon, African Green, Cynomolgus, Rhesus, Squirrel Monkey

Preparation: The LEAF™ (Low Endotoxin, Azide-Free) antibody was purified by affinity chromatography.

Formulation: 0.2 µm filtered in phosphate-buffered solution, pH 7.2, containing no preservative. Endotoxin level is <0.1 EU/µg of the protein (<0.01 ng/µg of the protein) as determined by the LAL test.

Concentration: 1.0 mg/ml

Storage: The antibody solution should be stored undiluted at 4°C. This LEAF™ solution contains no preservative; handle under aseptic conditions.



Human peripheral blood granulocytes were stained with LEAF™ purified CD11c (clone 3.9) (filled histogram) or LEAF™ purified mouse IgG1, κ isotype control (open histogram), followed by anti-mouse IgG FITC.

Applications:

Applications: FC - *Quality tested*
IHC, Block - *Reported in the literature*
CyTOF® - *Validated*

Recommended Usage: Each lot of this antibody is quality control tested by immunofluorescent staining with flow cytometric analysis. For immunofluorescent staining, the suggested use of this reagent is ≤2.0 µg per million cells in 100 µl volume. It is recommended that the reagent be titrated for optimal performance for each application.

Application Notes: Clone 3.9 preferentially binds the activated form of CD11c, is specific for I domain of CD11c, and is able to partially block the binding of CD11c and ICAM-4. 3.9 binding is divalent cation dependent.¹² Additional reported applications (for the relevant formats) include: immunohistochemical staining of acetone-fixed frozen tissue sections⁴, and functional assays^{5,6}. The LEAF™ purified antibody (Endotoxin <0.1 EU/µg, Azide-Free, 0.2 µm filtered) is recommended for functional assays (Cat. No. 301616). For highly sensitive assays, we recommend Ultra-LEAF™ purified antibody (Cat. No. 301632) with a lower endotoxin limit than standard LEAF™ purified antibodies (Endotoxin <0.01 EU/µg).

Application References:

- Schlossman S, *et al.* Eds. 1995. Leucocyte Typing V. Oxford University Press. New York.
- Knapp W, *et al.* 1989. Leucocyte Typing IV Oxford University Press. New York.
- McMichael A, *et al.* Eds. 1987. Leucocyte Typing III Oxford University Press. New York.
- Vainer B, *et al.* 2000. *Am. J. Surg. Pathol.* 24:1115. (IHC)
- Otonello L, *et al.* 1999. *Blood* 93:3505.
- Metelitsa LS, *et al.* 2002. *Blood* 99:4166.
- Sadhu C, *et al.* 2007. *J. Leukoc. Biol.* doi:10.1189/jlb.1106680. PubMed
- Ihanus E, *et al.* 2007. *Blood* 109:802-810.
- Gurer C, *et al.* 2008. *Blood* 112:1231. PubMed
- Asai A, *et al.* 2009. *J. Lipid Res.* 50:95. PubMed
- Yoshino N, *et al.* 2000. *Exp. Anim. (Tokyo)* 49:97. (FC)
- Sadhu C, *et al.* 2008. *J. Immunoass. Immunoch.* 29:42. (FC)

Description: CD11c is a 145-150 kD type I transmembrane glycoprotein also known as integrin α_X and CR4. CD11c non-covalently associates with integrin β₂ (CD18) and is expressed on monocytes/macrophages, dendritic cells, granulocytes, NK cells, and subsets of T and B cells. CD11c has been reported to play a role in adhesion and CTL killing through its interactions with fibrinogen, CD54, and iC3b.

Antigen References:

- Petty H. 1996. *Immunol. Today* 17:209.
- Springer T. 1994. *Cell* 76:301.
- Ihanus E, *et al.* 2007. *Blood* 109:802-810.

Related Products:

Product
Purified anti-human CD83
LEAF™ Purified anti-human CD11a
LEAF™ Purified anti-human CD11b
Purified anti-human CD18
LEAF™ Purified Mouse IgG1, κ Isotype Ctrl

Clone
HB15e
HI111
ICRF44
TS1/18
MOPC-21

Application
FC, IHC
FC, Block, IHC, WB
Block, FC, IF, IHC, CyTOF®
FC
FC, ICFC, WB, IP, ICC, IF, FA



For research use only. Not for diagnostic use. Not for resale. BioLegend will not be held responsible for patent infringement or other violations that may occur with the use of our products.



*These products may be covered by one or more Limited Use Label Licenses (see the BioLegend Catalog or our website, www.biolegend.com/ordering#license). BioLegend products may not be transferred to third parties, resold, modified for resale, or used to manufacture commercial products, reverse engineer functionally similar materials, or to provide a service to third parties without written approval of BioLegend. By use of these products you accept the terms and conditions of all applicable Limited Use Label Licenses. Unless otherwise indicated, these products are for research use only and are not intended for human or animal diagnostic, therapeutic or commercial use.