

Product Data Sheet

FITC anti-human CD11c

Catalog # / Size: 301603 / 25 tests
301604 / 100 tests

Clone: 3.9

Isotype: Mouse IgG1, κ

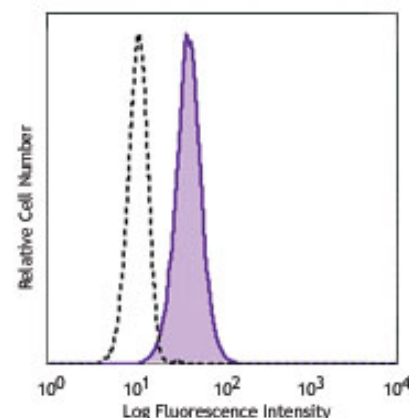
Workshop Number: III NL707

Reactivity: Human, **Cross-Reactivity:** Chimpanzee, Baboon, African Green, Cynomolgus, Rhesus, Squirrel Monkey

Preparation: The antibody was purified by affinity chromatography, and conjugated with FITC under optimal conditions. The solution is free of unconjugated FITC.

Formulation: Phosphate-buffered solution, pH 7.2, containing 0.09% sodium azide and 0.2% (w/v) BSA (origin USA).

Storage: The antibody solution should be stored undiluted at 4°C and protected from prolonged exposure to light. **Do not freeze.**



Human peripheral blood granulocytes were stained with CD11c (clone 3.9) FITC (filled histogram) or mouse IgG1, κ FITC isotype control (open histogram).

Applications:

Applications: FC - Quality tested

Recommended Usage: Each lot of this antibody is quality control tested by immunofluorescent staining with flow cytometric analysis. **Test size products are transitioning from 20 μ l to 5 μ l per test.** Please check your vial or your CoA to find the suggested use of this reagent per million cells in 100 μ l staining volume or per 100 μ l of whole blood. It is recommended that the reagent be titrated for optimal performance for each application. Read more at www.biolegend.com/testsize regarding the test size change.

Application Notes: Clone 3.9 preferentially binds the activated form of CD11c, is specific for I domain of CD11c, and is able to partially block the binding of CD11c and ICAM-4. 3.9 binding is divalent cation dependent.¹² Additional reported applications (for the relevant formats) include: immunohistochemical staining of acetone-fixed frozen tissue sections⁴, and functional assays^{5,6}. The LEAF™ purified antibody (Endotoxin <0.1 EU/ μ g, Azide-Free, 0.2 μ m filtered) is recommended for functional assays (Cat. No. 301616). For highly sensitive assays, we recommend Ultra-LEAF™ purified antibody (Cat. No. 301632) with a lower endotoxin limit than standard LEAF™ purified antibodies (Endotoxin <0.01 EU/ μ g).

Application References:

- Schlossman S, *et al.* Eds. 1995. Leucocyte Typing V. Oxford University Press. New York.
- Knapp W, *et al.* 1989. Leucocyte Typing IV Oxford University Press. New York.
- McMichael A, *et al.* Eds. 1987. Leucocyte Typing III Oxford University Press. New York.
- Vainer B, *et al.* 2000. *Am. J. Surg. Pathol.* 24:1115. (IHC)
- Ottonello L, *et al.* 1999. *Blood* 93:3505.
- Metelitsa LS, *et al.* 2002. *Blood* 99:4166.
- Sadhu C, *et al.* 2007. *J. Leukoc. Biol.* doi:10.1189/jlb.1106680. PubMed
- Ihanus E, *et al.* 2007. *Blood* 109:802-810.
- Gurer C, *et al.* 2008. *Blood* 112:1231. PubMed
- Asai A, *et al.* 2009. *J. Lipid Res.* 50:95. PubMed
- Yoshino N, *et al.* 2000. *Exp. Anim. (Tokyo)* 49:97. (FC)
- Sadhu C, *et al.* 2008. *J. Immunoass. Immunoch.* 29:42. (FC)

Description: CD11c is a 145-150 kD type I transmembrane glycoprotein also known as integrin α_X and CR4. CD11c non-covalently associates with integrin β_2 (CD18) and is expressed on monocytes/macrophages, dendritic cells, granulocytes, NK cells, and subsets of T and B cells. CD11c has been reported to play a role in adhesion and CTL killing through its interactions with fibrinogen, CD54, and iC3b.

Antigen References:

- Petty H. 1996. *Immunol. Today* 17:209.
- Springer T. 1994. *Cell* 76:301.
- Ihanus E, *et al.* 2007. *Blood* 109:802-810.

Related Products:

Product	Clone	Application
FITC anti-human CD11b (activated)	CBRM1/5	FC
FITC anti-human CD83	HB15e	FC
FITC anti-human CD11a	HI111	FC
PE anti-human CD11b	ICRF44	FC
FITC anti-human CD18	TS1/18	FC
FITC Mouse IgG1, κ Isotype Ctrl	MOPC-21	FC, ICFC



For research use only. Not for diagnostic use. Not for resale. BioLegend will not be held responsible for patent infringement or other violations that may occur with the use of our products.



*These products may be covered by one or more Limited Use Label Licenses (see the BioLegend Catalog or our website, www.biolegend.com/ordering#license). BioLegend products may not be transferred to third parties, resold, modified for resale, or used to manufacture commercial products, reverse engineer functionally similar materials, or to provide a service to third parties without written approval of BioLegend. By use of these products you accept the terms and conditions of all applicable Limited Use Label Licenses. Unless otherwise indicated, these products are for research use only and are not intended for human or animal diagnostic, therapeutic or commercial use.

Cell Staining Buffer
RBC Lysis Buffer (10X)
Human TruStain FcX™ (Fc Receptor Blocking Solution)

FC, ICC, ICFC
FC, ICFC
FC, ICC, ICFC



For research use only. Not for diagnostic use. Not for resale. BioLegend will not be held responsible for patent infringement or other violations that may occur with the use of our products.



*These products may be covered by one or more Limited Use Label Licenses (see the BioLegend Catalog or our website, www.biolegend.com/ordering#license). BioLegend products may not be transferred to third parties, resold, modified for resale, or used to manufacture commercial products, reverse engineer functionally similar materials, or to provide a service to third parties without written approval of BioLegend. By use of these products you accept the terms and conditions of all applicable Limited Use Label Licenses. Unless otherwise indicated, these products are for research use only and are not intended for human or animal diagnostic, therapeutic or commercial use.

BioLegend Inc., 9727 Pacific Heights Blvd, San Diego, CA 92121 www.biolegend.com
Toll-Free Phone: 1-877-Bio-Legend (246-5343) Phone: (858) 768-5800 Fax: (877) 455-9587