

Product Data Sheet

PE anti-human CD11b (activated)

Catalog # / Size: 301405 / 25 tests
301406 / 100 tests

Clone: CBRM1/5

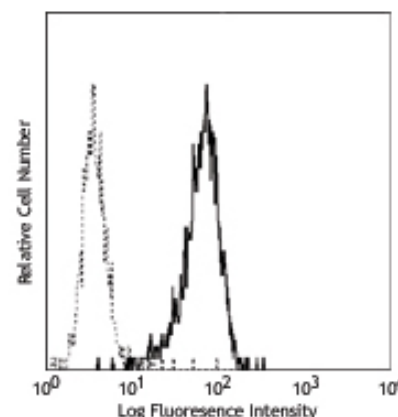
Isotype: Mouse IgG1, κ

Reactivity: Human

Preparation: The antibody was purified by affinity chromatography, and conjugated with PE under optimal conditions. The solution is free of unconjugated PE and unconjugated antibody.

Formulation: Phosphate-buffered solution, pH 7.2, containing 0.09% sodium azide and 0.2% (w/v) BSA (origin USA).

Storage: The antibody solution should be stored undiluted at 4°C and protected from prolonged exposure to light. **Do not freeze.**



PMA activated human granulocytes stained with CBRM1/5 FITC

Applications:

Applications: FC - Quality tested

Recommended Usage: Each lot of this antibody is quality control tested by immunofluorescent staining with flow cytometric analysis. **Test size products are transitioning from 20 μ l to 5 μ l per test.** Please check your vial or your CoA to find the suggested use of this reagent per million cells in 100 μ l staining volume or per 100 μ l of whole blood. It is recommended that the reagent be titrated for optimal performance for each application. Read more at www.biolegend.com/testsize regarding the test size change.

Application Notes: Additional reported applications (for the relevant formats) include: immunoprecipitation, and blocking¹ of the binding of ICAM-1 and fibrinogen. The CBRM1/5 antibody binds specifically to the activated form of CD11b. The LEAF™ purified antibody (Endotoxin <0.1 EU/ μ g, Azide-Free, 0.2 μ m filtered) is recommended for functional assays (Cat. No. 301408).

Application References:

1. Diamond M, *et al.* 1993. *J. Cell Biol.* 120:545. (Block)
2. Bryn T, *et al.* 2006. *J. Immunol.* 176:7361. *J. Immunol.*
3. Sithu SD, *et al.* 2007. *J. Biol. Chem.* doi:10.1074/jbc.M611273200.
4. Barthel SR, *et al.* 2006. *Am J. Respir Cell Mol Biol.* 35:378. PubMed
5. Pillay J, *et al.* 2010. *J. Leukocyte Biol.* 88:211. PubMed
6. Wilson RP, *et al.* 2011. *Infect Immun.* 79:830. PubMed
7. Koleva RI, *et al.* 2012. *Blood.* 119:4878. PubMed
8. Eleftherious D, *et al.* 2012. *Neurology.* 79:2089. PubMed.

Description: The CBRM1/5 antibody reacts with an activated form of human CD11b, a 165-170 kD type I transmembrane glycoprotein also known as α_M integrin, Mac-1, CR3, and C3bIR. CD11b non-covalently associates with integrin β_2 (CD18) and is expressed on granulocytes, monocytes/macrophages dendritic cells, NK cells, and subsets of T and B cells. CD11b/CD18 is critical for the transendothelial migration of monocytes and neutrophils, as well as adhesion, phagocytosis and neutrophil activation. CD11b/CD18 interacts with ICAM-1 (CD54), ICAM-2 (CD102), ICAM-4, CD14, CD23, heparin, iC3b, fibrinogen and Factor X. The CBRM1/5 antibody recognizes a subset of CD11b molecules on neutrophils and monocytes activated with chemoattractants or phorbol-esters. This antibody does not recognize "non-activated" CD11b. The epitope recognized by CBRM1/5 is contained in the I domain of the α chain. The CBRM1/5 antibody blocks cell adhesion to fibrinogen and ICAM-1.

Antigen References:

1. Stewart M, *et al.* 1995. *Curr. Opin. Cell Biol.* 7:690.
2. Petty H, *et al.* 1996. *Immunol. Today* 17:209.

Related Products:

Product	Clone	Application
PE anti-human CD11c	3.9	FC
PE anti-human CD11a	HI111	FC
PE anti-human CD11b	ICRF44	FC
PE anti-human CD18	TS1/18	FC
PE Mouse IgG1, κ Isotype Ctrl	MOPC-21	FC, ICFC
Cell Staining Buffer		FC, ICC, ICFC
RBC Lysis Buffer (10X)		FC, ICFC
Human TruStain FcX™ (Fc Receptor Blocking Solution)		FC, ICC, ICFC



For research use only. Not for diagnostic use. Not for resale. BioLegend will not be held responsible for patent infringement or other violations that may occur with the use of our products.



*These products may be covered by one or more Limited Use Label Licenses (see the BioLegend Catalog or our website, www.biolegend.com/ordering#license). BioLegend products may not be transferred to third parties, resold, modified for resale, or used to manufacture commercial products, reverse engineer functionally similar materials, or to provide a service to third parties without written approval of BioLegend. By use of these products you accept the terms and conditions of all applicable Limited Use Label Licenses. Unless otherwise indicated, these products are for research use only and are not intended for human or animal diagnostic, therapeutic or commercial use.