

# Product Data Sheet

## PE/Cy7 anti-human CD11b

**Catalog # / Size:** 301321 / 25 tests  
301322 / 100 tests

**Clone:** ICRF44

**Isotype:** Mouse IgG1,  $\kappa$

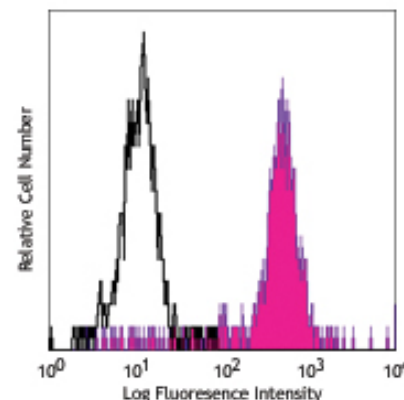
**Workshop Number:** IV M047

**Reactivity:** Human, **Cross-Reactivity:** Chimpanzee, Baboon, Cynomolgus, Rhesus, Common Marmoset, Swine (Pig, Porcine)

**Preparation:** The antibody was purified by affinity chromatography, and conjugated with PE/Cy7 under optimal conditions. The solution is free of unconjugated PE/Cy7 and unconjugated antibody.

**Formulation:** Phosphate-buffered solution, pH 7.2, containing 0.09% sodium azide and 0.2% (w/v) BSA (origin USA).

**Storage:** The antibody solution should be stored undiluted at 4°C and protected from prolonged exposure to light. **Do not freeze.**



Human peripheral blood monocytes stained with ICRF44 PE/Cy7

## Applications:

**Applications:** FC - Quality tested

**Recommended Usage:** Each lot of this antibody is quality control tested by immunofluorescent staining with flow cytometric analysis. **Test size products are transitioning from 20  $\mu$ l to 5  $\mu$ l per test.** Please check your vial or your CoA to find the suggested use of this reagent per million cells in 100  $\mu$ l staining volume or per 100  $\mu$ l of whole blood. It is recommended that the reagent be titrated for optimal performance for each application. Read more at [www.biolegend.com/testsize](http://www.biolegend.com/testsize) regarding the test size change.

**Application Notes:** The ICRF44 antibody inhibits heterotypic adhesion of granulocytes in response to fMLP. Additional reported applications (for the relevant formats) include: immunohistochemical staining of acetone-fixed frozen tissue sections, immunofluorescence microscopy<sup>5</sup>, and blocking of granulocyte activation<sup>3,4</sup>. The LEAF™ purified antibody (Endotoxin <0.1 EU/ $\mu$ g, Azide-Free, 0.2  $\mu$ m filtered) is recommended for functional assays (Cat. No. 301312).

Cy3, Cy5, Cy5.5 and Cy7 are subject to proprietary rights of GE Healthcare Bio-Sciences Corp. and Carnegie Mellon University and made and sold under license from GE Healthcare Bio-Sciences Corp. Sale of this product is licensed for research use only.

- Application References:**
- Knapp W. 1989. Leucocyte Typing IV. Oxford University Press New York.
  - Barclay N, *et al.* 1997. The Leucocyte Antigen Facts Book. Academic Press Inc. San Diego.
  - Rezzonico R, *et al.* 2001. *Blood* 97:2932. (Block)
  - Marsik C, *et al.* 2003. *Shock* 20:493. (Block)
  - David A, *et al.* 2003. *J. Leukoc. Biol.* 74:551. (IF)
  - Charles N, *et al.* 2010. *Nat. Med.* 16:701. (FC) PubMed
  - Thurlow LR, *et al.* 2010. *Infect. Immun.* 128:1128. PubMed
  - Jadhav S, *et al.* 2001. *Blood* 167:5986. (Block)
  - Yoshino N, *et al.* 2000. *Exp. Anim. (Tokyo)* 49:97. (FC)
  - Sestak K, *et al.* 2007. *Vet. Immunol. Immunop.* 119:21.

**Description:** CD11b is a 165-170 kD type I transmembrane glycoprotein also known as  $\alpha_M$  integrin, Mac-1, CR3, and C3bIR. CD11b non-covalently associates with integrin  $\beta_2$  (CD18) and is expressed on granulocytes, monocytes/macrophages, dendritic cells, NK cells, and subsets of T and B cells. CD11b/CD18 is critical for the transendothelial migration of monocytes and neutrophils. It is also involved in granulocyte adhesion, phagocytosis, and neutrophil activation. CD11b/CD18 interacts with ICAM-1 (CD54), ICAM-2 (CD102), ICAM-4, CD14, CD23, heparin, iC3b, fibrinogen, and Factor X.

**Antigen References:** 1. Stewart M, *et al.* 1995. *Curr. Opin. Cell Biol.* 7:690.

### Related Products:

Product  
Cell Staining Buffer  
PE/Cy7 Mouse IgG1,  $\kappa$  Isotype Ctrl  
Human TruStain FcX™ (Fc Receptor Blocking Solution)

### Clone

MOPC-21

### Application

FC, ICC, ICFC  
FC, ICFC  
FC, ICC, ICFC



For research use only. Not for diagnostic use. Not for resale. BioLegend will not be held responsible for patent infringement or other violations that may occur with the use of our products.



\*These products may be covered by one or more Limited Use Label Licenses (see the BioLegend Catalog or our website, [www.biolegend.com/ordering#license](http://www.biolegend.com/ordering#license)). BioLegend products may not be transferred to third parties, resold, modified for resale, or used to manufacture commercial products, reverse engineer functionally similar materials, or to provide a service to third parties without written approval of BioLegend. By use of these products you accept the terms and conditions of all applicable Limited Use Label Licenses. Unless otherwise indicated, these products are for research use only and are not intended for human or animal diagnostic, therapeutic or commercial use.