

Product Data Sheet

Purified anti-human CD11b

Catalog # / Size: 301302 / 100 µg

Clone: ICRF44

Isotype: Mouse IgG1, κ

Workshop Number: IV M047

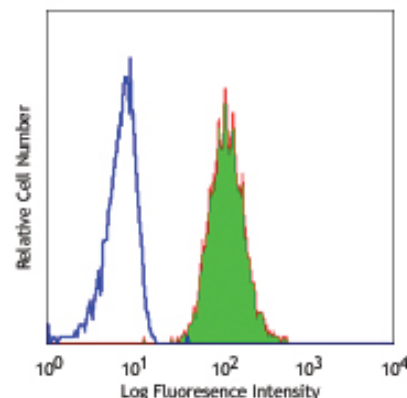
Reactivity: Human, **Cross-Reactivity:** Chimpanzee, Baboon, Cynomolgus, Rhesus, Common Marmoset, Swine (Pig, Porcine)

Preparation: The antibody was purified by affinity chromatography.

Formulation: Phosphate-buffered solution, pH 7.2, containing 0.09% sodium azide.

Concentration: 0.5 mg/ml

Storage: The antibody solution should be stored undiluted at 4°C.



Human peripheral blood granulocytes stained with purified ICRF44, followed by anti-mouse IgGs FITC

Applications:

Applications: FC - *Quality tested*
 IHC, IF - *Reported in the literature*
 CyTOF® - *Validated*

Recommended Usage: Each lot of this antibody is quality control tested by immunofluorescent staining with flow cytometric analysis. For immunofluorescent staining, the suggested use of this reagent is ≤ 0.5 µg per 10⁶ cells in 100 µl volume or 100 µl of whole blood. It is recommended that the reagent be titrated for optimal performance for each application.

Application Notes: The ICRF44 antibody inhibits heterotypic adhesion of granulocytes in response to fMLP. Additional reported applications (for the relevant formats) include: immunohistochemical staining of acetone-fixed frozen tissue sections, immunofluorescence microscopy⁵, and blocking of granulocyte activation^{3,4}. The LEAF™ purified antibody (Endotoxin <0.1 EU/µg, Azide-Free, 0.2 µm filtered) is recommended for functional assays (Cat. No. 301312).

Application References:

- Knapp W. 1989. Leucocyte Typing IV. Oxford University Press New York.
- Barclay N, *et al.* 1997. The Leucocyte Antigen Facts Book. Academic Press Inc. San Diego.
- Rezzonico R, *et al.* 2001. *Blood* 97:2932. (Block)
- Marsik C, *et al.* 2003. *Shock* 20:493. (Block)
- David A, *et al.* 2003. *J. Leukoc. Biol.* 74:551. (IF)
- Charles N, *et al.* 2010. *Nat. Med.* 16:701. (FC) PubMed
- Thurlow LR, *et al.* 2010. *Infect. Immun.* 128:1128. PubMed
- Jadhav S, *et al.* 2001. *Blood* 167:5986. (Block)
- Yoshino N, *et al.* 2000. *Exp. Anim. (Tokyo)* 49:97. (FC)
- Sestak K, *et al.* 2007. *Vet. Immunol. Immunop.* 119:21.

Description: CD11b is a 165-170 kD type I transmembrane glycoprotein also known as α_M integrin, Mac-1, CR3, and C3bIR. CD11b non-covalently associates with integrin β₂ (CD18) and is expressed on granulocytes, monocytes/macrophages, dendritic cells, NK cells, and subsets of T and B cells. CD11b/CD18 is critical for the transendothelial migration of monocytes and neutrophils. It is also involved in granulocyte adhesion, phagocytosis, and neutrophil activation. CD11b/CD18 interacts with ICAM-1 (CD54), ICAM-2 (CD102), ICAM-4, CD14, CD23, heparin, iC3b, fibrinogen, and Factor X.

Antigen References: 1. Stewart M, *et al.* 1995. *Curr. Opin. Cell Biol.* 7:690.

Related Products:

Product
 Purified anti-human CD11c
 Purified anti-human CD11b (activated)
 Purified anti-human CD11a
 Purified anti-human CD18
 Purified Mouse IgG1, κ Isotype Ctrl
 AKP Goat anti-mouse IgG (minimal x-reactivity)
 APC Goat anti-mouse IgG (minimal x-reactivity)
 Biotin Goat anti-mouse IgG (minimal x-reactivity)
 FITC Goat anti-mouse IgG (minimal x-reactivity)
 HRP Goat anti-mouse IgG (minimal x-reactivity)
 PE Goat anti-mouse IgG (minimal x-reactivity)
 Cell Staining Buffer
 RBC Lysis Buffer (10X)

Clone
 3.9
 CBRM1/5
 HI111
 TS1/18
 MOPC-21
 Poly4053
 Poly4053
 Poly4053
 Poly4053
 Poly4053
 Poly4053

Application
 FC, IHC, CyTOF®
 FC, IP
 FC, IHC, WB
 FC
 FC, ICFC, ICC, IF, IHC, IP, WB
 ELISA, WB, IHC
 FC
 FC, ELISA, IHC, IF, WB
 FC
 ELISA, IHC, WB
 FC
 FC, ICC, ICFC
 FC, ICFC



For research use only. Not for diagnostic use. Not for resale. BioLegend will not be held responsible for patent infringement or other violations that may occur with the use of our products.



*These products may be covered by one or more Limited Use Label Licenses (see the BioLegend Catalog or our website, www.biollegend.com/ordering#license). BioLegend products may not be transferred to third parties, resold, modified for resale, or used to manufacture commercial products, reverse engineer functionally similar materials, or to provide a service to third parties without written approval of BioLegend. By use of these products you accept the terms and conditions of all applicable Limited Use Label Licenses. Unless otherwise indicated, these products are for research use only and are not intended for human or animal diagnostic, therapeutic or commercial use.